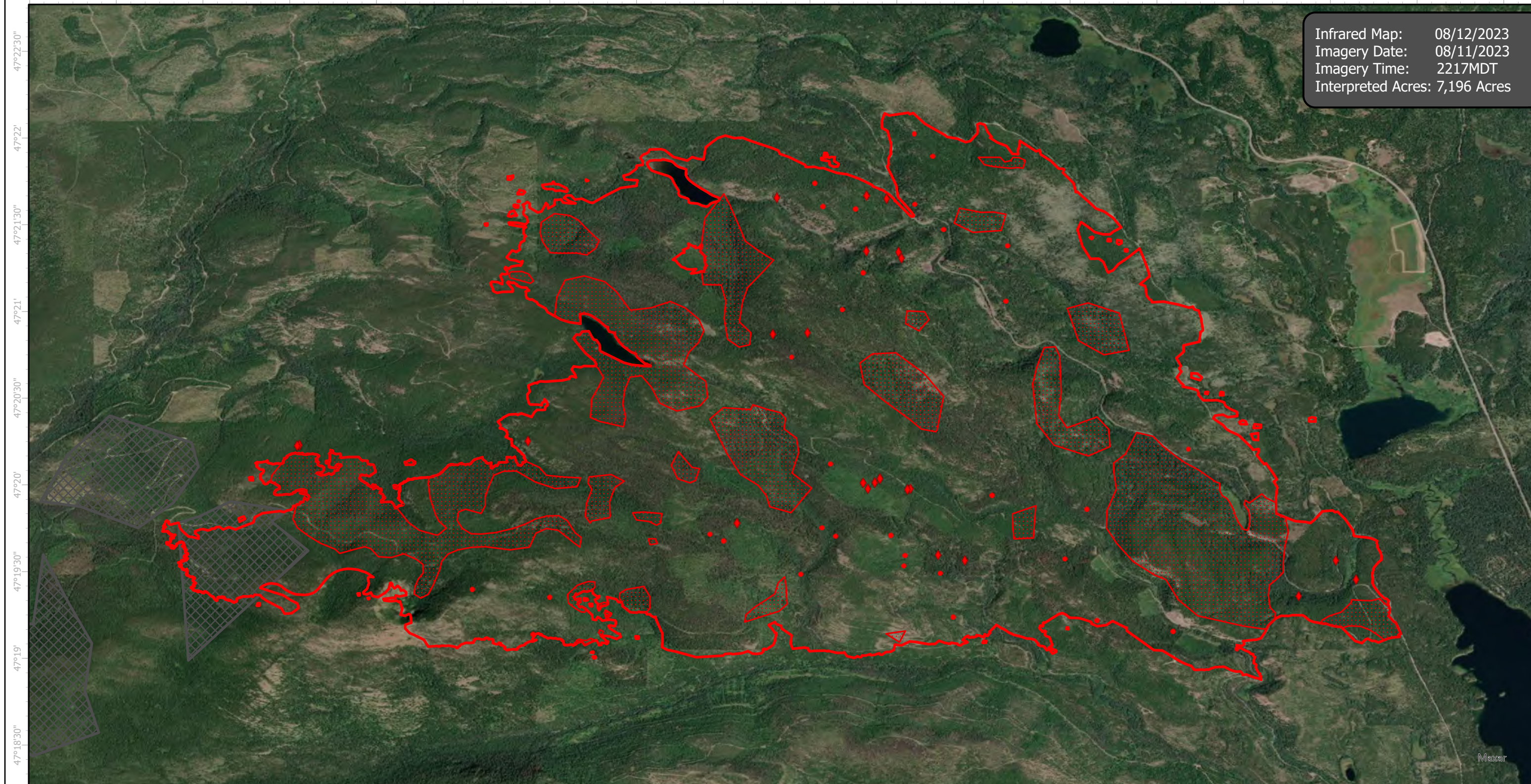


# Colt Infrared Map

Incident # (MT-SWS-200549)

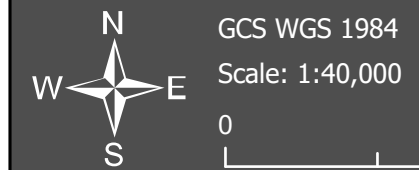


-113°43'30" -113°43' -113°42'30" -113°42' -113°41'30" -113°41' -113°40'30" -113°40' -113°39'30" -113°39' -113°38'30" -113°38' -113°37'30" -113°37' -113°36'30" -113°36' -113°35'30" -113°35'



Infrared Map: 08/12/2023  
Imagery Date: 08/11/2023  
Imagery Time: 2217MDT  
Interpreted Acres: 7,196 Acres

-113°43'30" -113°43' -113°42'30" -113°42' -113°41'30" -113°41' -113°40'30" -113°40' -113°39'30" -113°39' -113°38'30" -113°38' -113°37'30" -113°37' -113°36'30" -113°36' -113°35'30" -113°35'



- IR Isolated Heat Source
- IR Heat Perimeter
- Possible IR Heat Source
- IR Scattered Heat
- Cloud Cover

Infrared Interrupter: Daniel LeVrier  
email: [daniel.levrier@usda.gov](mailto:daniel.levrier@usda.gov)