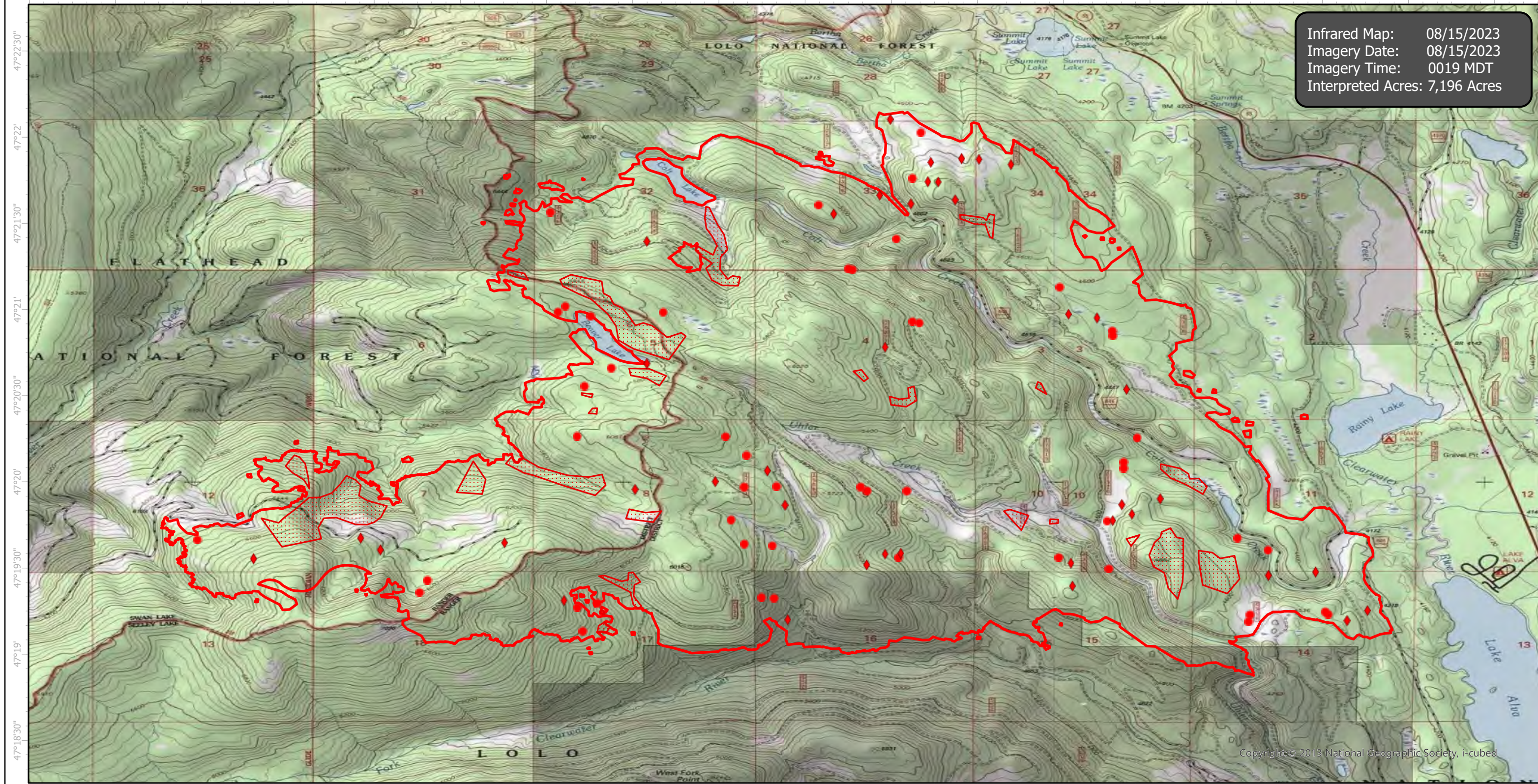


Colt Infrared Map

Incident # (MT-SWS-200549)

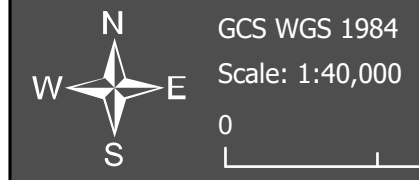


-113°43'30" -113°43' -113°42'30" -113°42' -113°41'30" -113°41' -113°40'30" -113°40' -113°39'30" -113°39' -113°38'30" -113°38' -113°37'30" -113°37' -113°36'30" -113°36' -113°35'30" -113°35'



Infrared Map: 08/15/2023
Imagery Date: 08/15/2023
Imagery Time: 0019 MDT
Interpreted Acres: 7,196 Acres

-113°43'30" -113°43' -113°42'30" -113°42' -113°41'30" -113°41' -113°40'30" -113°40' -113°39'30" -113°39' -113°38'30" -113°38' -113°37'30" -113°37' -113°36'30" -113°36' -113°35'30" -113°35'



- IR Isolated Heat Source
- ◆ Possible IR Heat Source
- ▭ IR Heat Perimeter
- ▨ IR Scattered Heat

Infrared Interrupter: Daniel LeVrier
email: daniel.levrier@usda.gov

Copyright © 2013 National Geographic Society, i-cubed