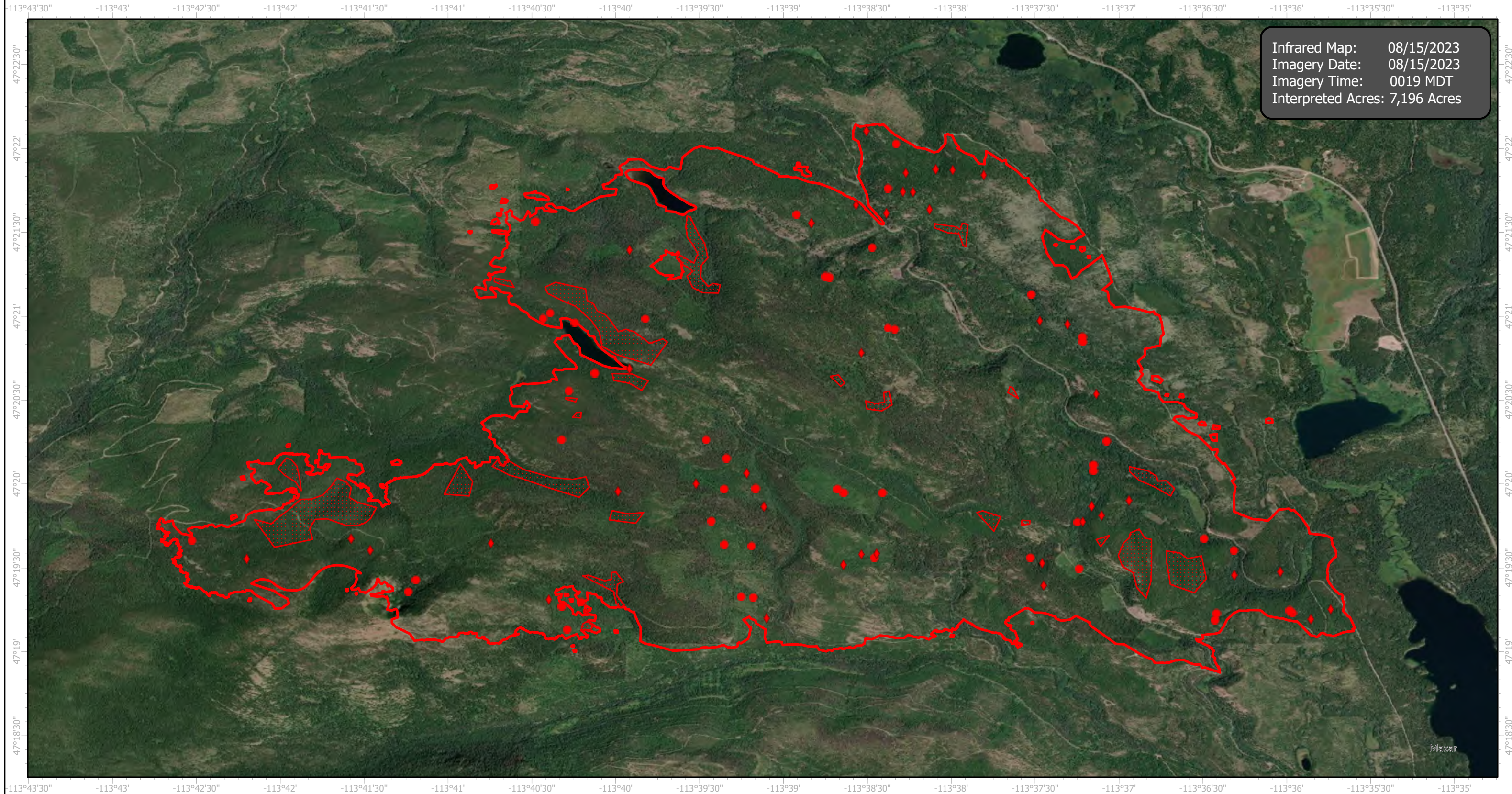


Colt Infrared Map

Incident # (MT-SWS-200549)



Infrared Map: 08/15/2023
Imagery Date: 08/15/2023
Imagery Time: 0019 MDT
Interpreted Acres: 7,196 Acres

GCS WGS 1984
Scale: 1:40,000

- IR Isolated Heat Source
- ◇ Possible IR Heat Source
- ▭ IR Heat Perimeter
- ▨ IR Scattered Heat

Infrared Interrupter: Daniel LeVrier
email: daniel.levrier@usda.gov