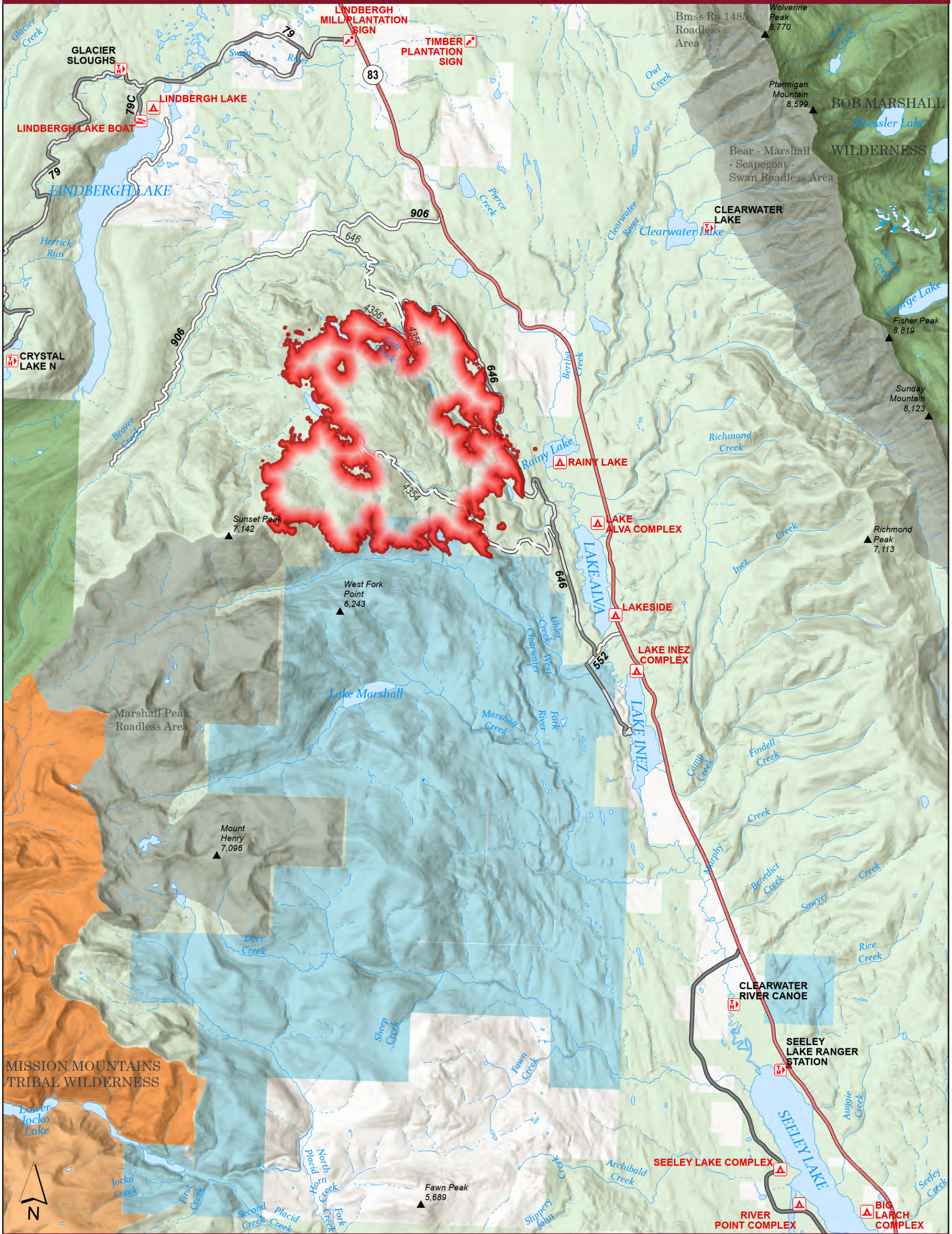


Colt Fire Public Information

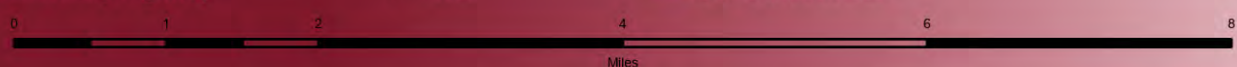


7/30/2023

MT-SWS-200549
5,475 acres

Fire perimeter updated from IR on 07/29/2023 @ 0030hrs

- | | | | |
|---------------------------------|-------------------|-------------------------------|-----------------------|
| Wildfire Daily Fire Perimeter | Secondary Highway | Stream / River | American Indian Lands |
| USFS Roadless Areas | Summit; Gap | Ice Mass | State Boundary Fill |
| Forest Service Land | Campground | Lake / Pond | Paved |
| Tribal Wilderness Area | Trailhead | Lake / Pond (Intermittent) | Gravel Road |
| American Indian Lands | Boating Site | Stream/River; Artificial Path | Dirt Road |
| Bureau of Land Management Lands | Interpretive Site | Canal / Ditch | Unimproved Road |
| State Lands | Spring/Seep | Stream/River Intermittent | |
| Secondary Highway | Wall | USFS Wilderness | |



NR Team1 CIMT
7/29/2023 2129
North American 1983
Datum. LatLong Grid