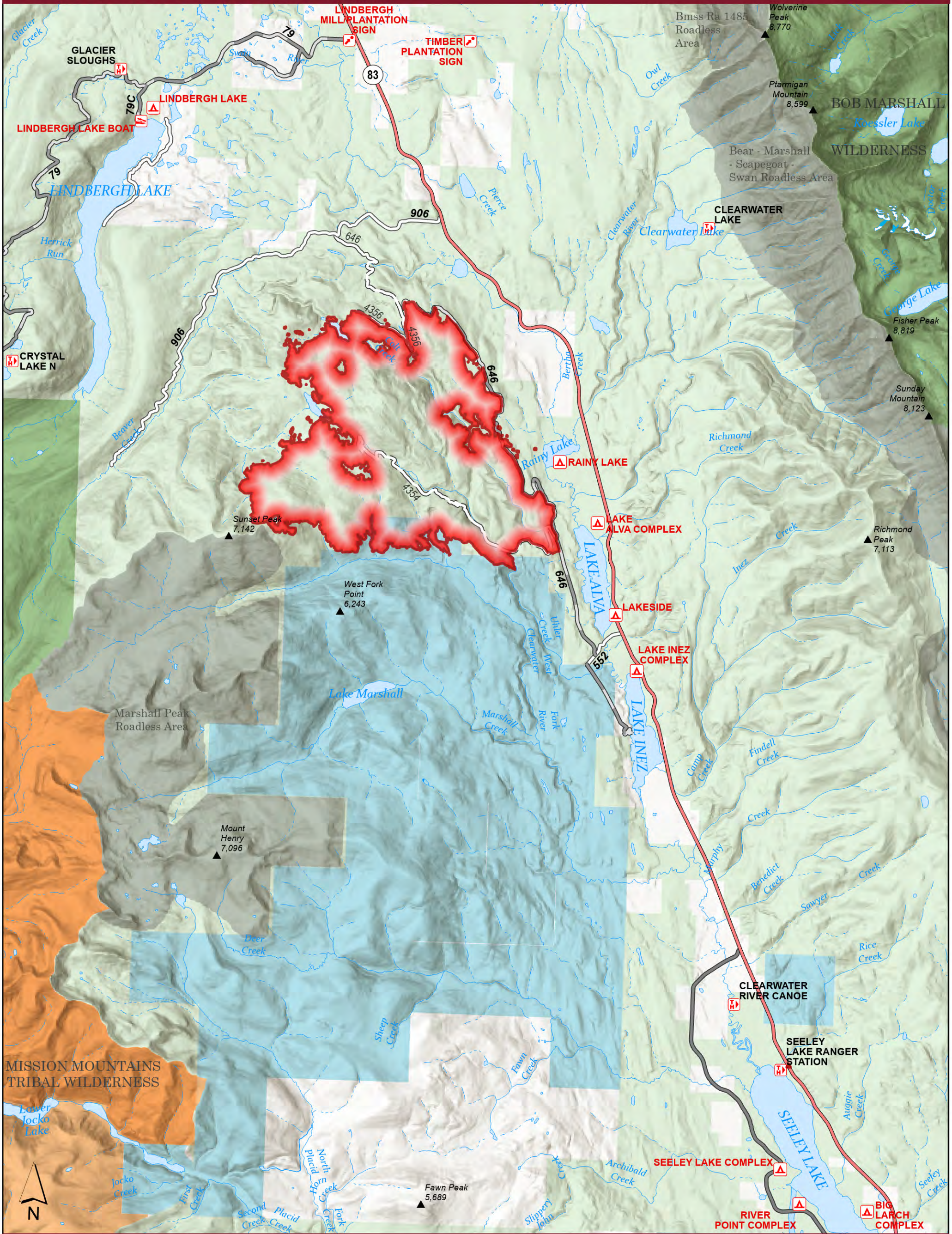


# Colt Fire Public Information

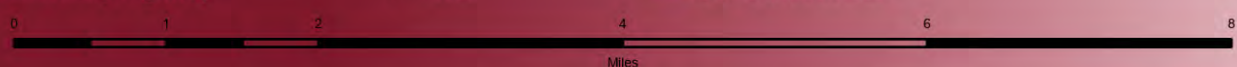


**7/31/2023**

**MT-SWS-200549**  
**6,177 acres**

Fire perimeter updated from IR on 07/30/2023 @ 1230hrs

- |                                 |                   |                               |                       |
|---------------------------------|-------------------|-------------------------------|-----------------------|
| Wildfire Daily Fire Perimeter   | Secondary Highway | Stream / River                | American Indian Lands |
| USFS Roadless Areas             | Summit; Gap       | Ice Mass                      | State Boundary Fill   |
| Forest Service Land             | Campground        | Lake / Pond                   | Paved                 |
| Tribal Wilderness Area          | Trailhead         | Lake / Pond (Intermittent)    | Gravel Road           |
| American Indian Lands           | Boating Site      | Stream/River; Artificial Path | Dirt Road             |
| Bureau of Land Management Lands | Interpretive Site | Canal / Ditch                 | Unimproved Road       |
| State Lands                     | Spring/Seep       | Stream/River Intermittent     |                       |
| Secondary Highway               | Wall              | USFS Wilderness               |                       |



NR Team1 CIMT  
7/30/2023 2202  
North American 1983  
Datum. LatLong Grid