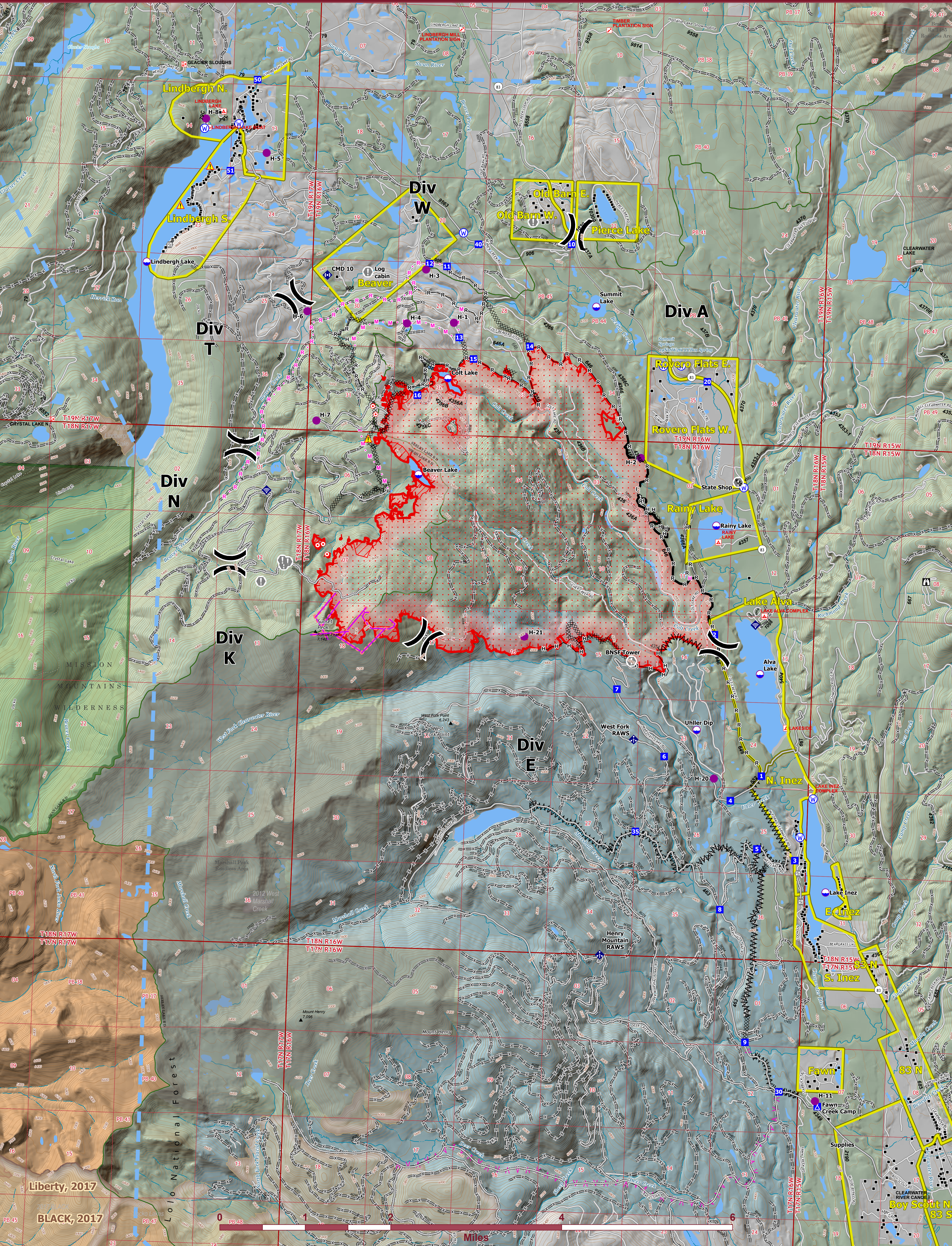




OPERATIONS



Colt Fire
 MT-SWS-200549
 8/1/2023
 6,704 Acres

Fire perimeter updated from IR on 8/1/2023 @ 0014hrs

- Label Point
- ▲ Hazard
- Dip Site
- Helispot
- ⌘ Division Break
- Drop Point
- ▲ Camp
- ⌘ Lookout
- Hot Spot - Spot Fire
- Value at Risk
- Other
- Gate
- Mobile Weather Unit
- Internet Access
- Repeater
- ▲ Water Source
- ⌘ Completed Dozer Line
- ⌘ Completed Fuel Break
- ⌘ Completed Hand Line
- ⌘ Completed Road as Line
- ▲ Planned Fuel Break
- ⌘ Planned Hand Line
- ⌘ Planned Mixed Construction Line
- ⌘ Planned Road as Line
- Access or Improved Road
- Retardant Drop
- Temporary Flight Restriction
- Contained
- Uncontained
- Wildfire Daily Fire Perimeter
- IR Heat Perimeter
- IR Intense Heat
- IR Scattered Heat
- Evacuation Areas
- Structures
- Campground
- Trailhead
- Boating Site
- Interpretive Site
- Administrative FS Boundary
- Ranger District Boundary
- FS Wilderness Boundary
- Forest Service Roads Closed
- Local Connector
- Local Road
- Trail
- Perennial Stream
- Intermittent Stream
- Perennial NHD Waterbody
- Perennial NHD Area
- Historic Fire 2016-2018
- Historic Fire 2010-2015
- Historic Fire 2000-2009
- 2013-2021
- 2000-2012
- Bureau of Indian Affairs (BIA)
- Bureau of Land Management (BLM)
- State
- US Forest Service (USFS)
- Private
- Undetermined
- USFS Roadless Areas
- USFS Wilderness

Hillshade_DEM_10m_Mosaic_Dataset

Value
 855



Northern Rockies IMT-1
 8/1/2023 0426
 North American 1983 Datum, LatLong Grid