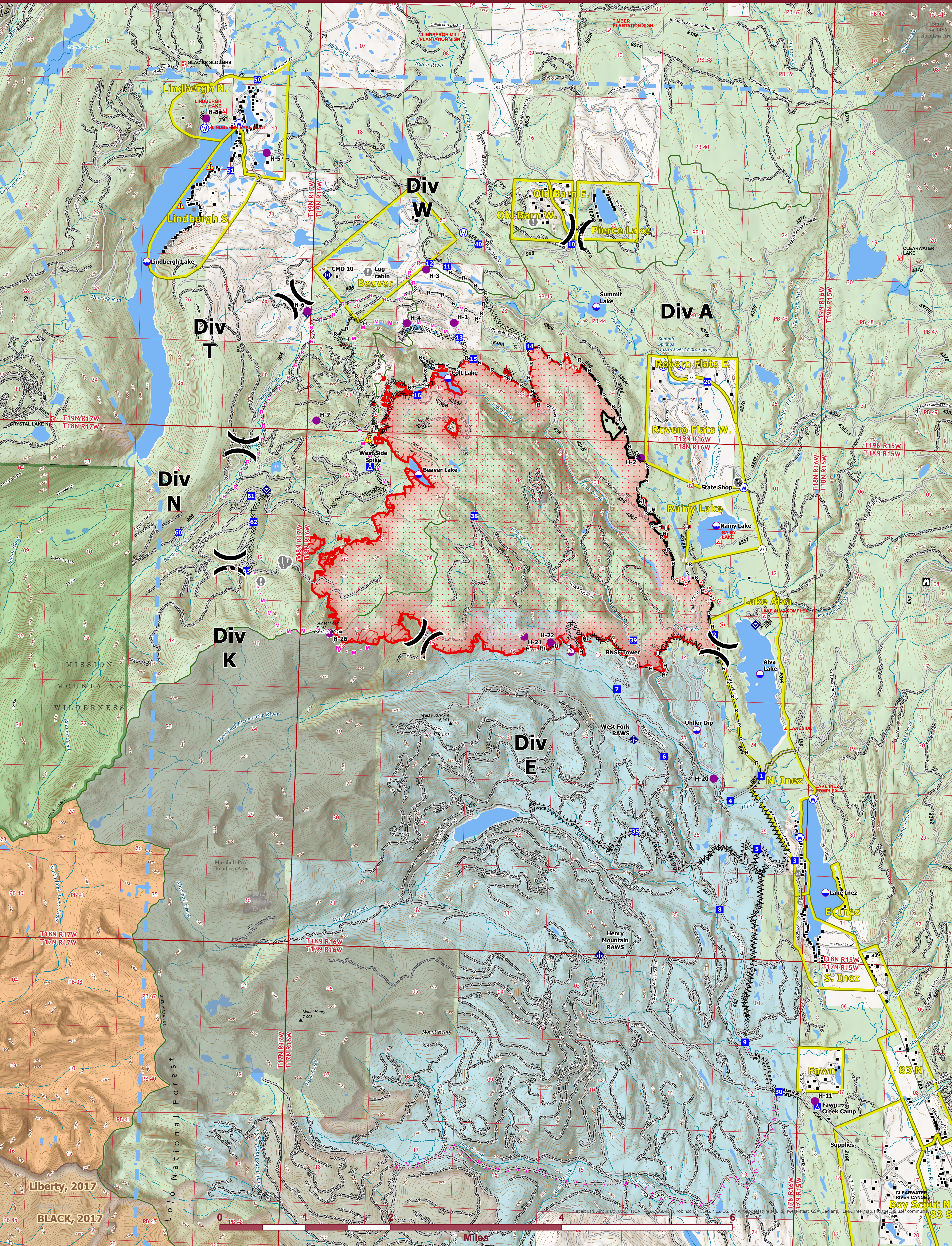




OPERATIONS



Colt Fire
 MT-SWS-200549
 8/2/2023
 6,860 Acres

Fire perimeter updated from IR on 8/2/2023 @ 0112hrs

- | | | | | |
|------------------------|-----------------------------------|---------------------------------|-------------------------------|-----------------------------------|
| ● Label Point | ◆ Internet Access | — Temporary Flight Restriction | — Administrative FS Boundary | ■ Historic Fire 2000-2009 |
| ● Dip Site | ◆ Repeater | — Contained | — Ranger District Boundary | ■ 2013-2021 |
| ● Helispot | ▲ Hazard | — Uncontained | — FS Wilderness Boundary | ■ 2000-2012 |
| ● Sling Site | ● Water Source | — Wildfire Daily Fire Perimeter | — Forest Service Roads Closed | ■ Bureau of Indian Affairs (BIA) |
| — Division Break | — Completed Dozer Line | — IR Heat Perimeter | — Local Connector | ■ Bureau of Land Management (BLM) |
| ● Drop Point | — Completed Fuel Break | — IR Intense Heat | — Local Road | ■ State |
| ● Camp | — Completed Hand Line | — IR Scattered Heat | — Trail | ■ US Forest Service (USFS) |
| ● Lookout | — Completed Road as Line | — Evacuation Areas | — Perennial Stream | ■ Private |
| ● Hot Spot - Spot Fire | — Planned Fuel Break | — Structures | — Intermittent Stream | ■ Undetermined |
| ● Value at Risk | — Planned Hand Line | — Campground | — Perennial NHD Waterbody | ■ USFS Roadless Areas |
| ● Other | — Planned Mixed Construction Line | — Trailhead | — Perennial NHD Area | ■ USFS Wilderness |
| ● Gate | — Planned Road as Line | — Boating Site | — Historic Fire 2016-2018 | |
| ● Mobile Weather Unit | — Access or Improved Road | — Interpretive Site | — Historic Fire 2010-2015 | |



Northern Rockies IMT-1
 8/2/2023 0408
 North American 1983 Datum, LatLong Grid