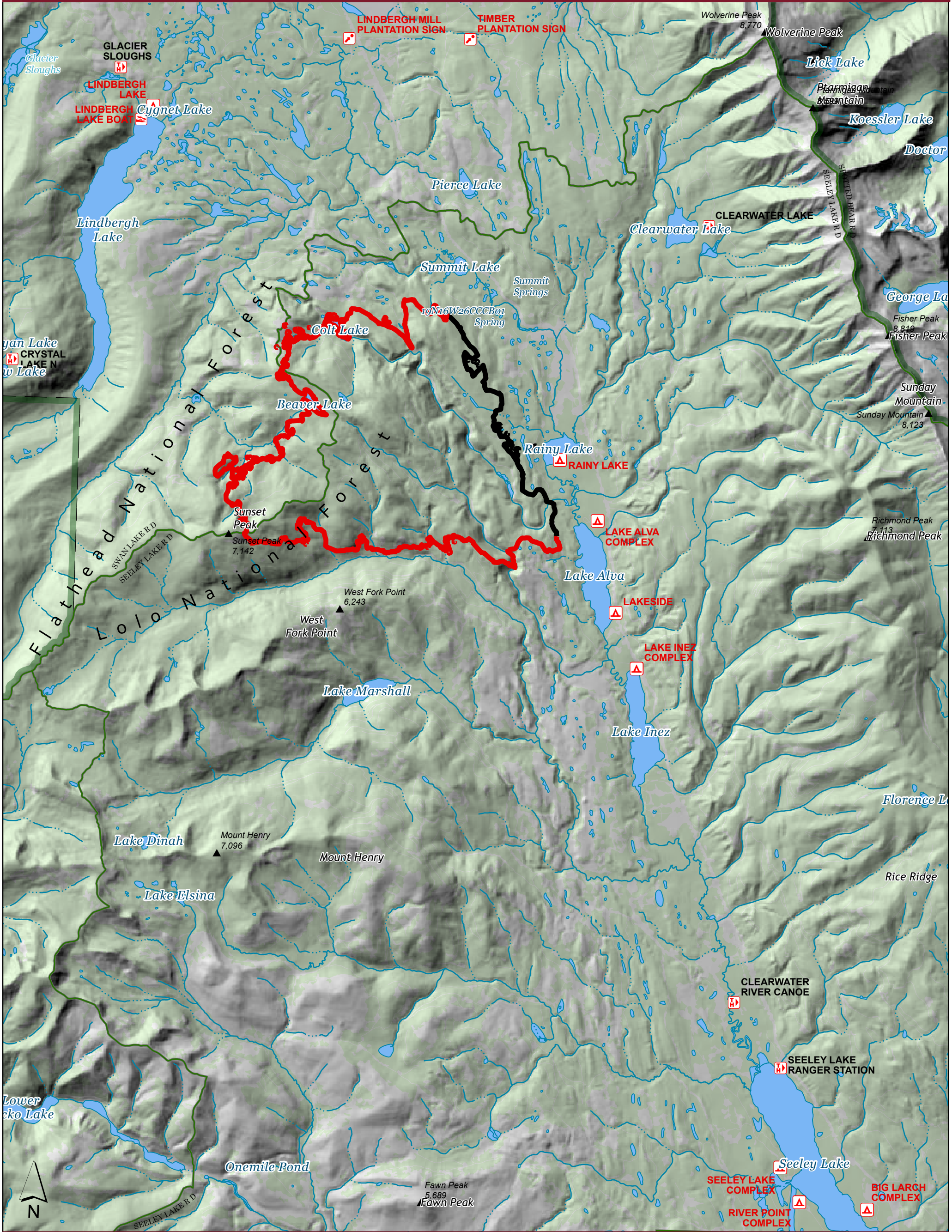


Colt Fire Public Information



8/3/2023

MT-SWS-200549
6,860 acres

Fire perimeter updated from
IR on 8/2/2023 @ 0112hrs

- | | | | |
|--------------------------|------------------------------|------------------------------|------------------------------|
| ■ Contained | 📍 Interpretive Site | 📍 Interpretive Site | 📍 Campground |
| 🔴 Uncontained | 📍 Administrative FS Boundary | 📍 State or Territory | 📍 Trailhead |
| 🟢 FS Wilderness Boundary | 📍 Ranger District Boundary | 📍 County or Equivalent | 📍 Boating Site |
| ▲ Summit; Gap | ▲ Summit; Gap | 📍 Administrative FS Boundary | 📍 Interpretive Site |
| 📍 Campground | 📍 Campground | 📍 Ranger District Boundary | 📍 Administrative FS Boundary |
| 📍 Trailhead | 📍 Trailhead | 📍 FS Wilderness Boundary | 📍 Ranger District Boundary |
| 📍 Boating Site | 📍 Boating Site | ▲ Summit; Gap | 📍 FS Wilderness Boundary |



NR Team1 CIMT
8/2/2023 2154
North American 1983
Datum. LatLong Grid

Pnt Type	Label	Latitude	Longitude	Elev. (ft)	Comments
Dip Site	Alva Lake	47° 18.897' N	113° 34.962' W	4100	Lake and campground closed
Dip Site	Beaver Lake	47° 20.810' N	113° 40.163' W	5800	
Dip Site	Colt Lake	47° 21.795' N	113° 39.773' W	4900	
Dip Site	Lake Inez	47° 16.702' N	113° 33.877' W	4100	
Dip Site	Lindbergh Lake	47° 22.874' N	113° 44.334' W	4500	Scoopers primary
Dip Site	Placid Lake	47° 07.144' N	113° 31.559' W	4100	
Dip Site	Rainy Lake	47° 20.391' N	113° 35.688' W	4100	
Dip Site	Summit Lake	47° 22.573' N	113° 37.591' W	4200	
Dip Site	Uhller Dip	47° 18.310' N	113° 35.880' W		Uhler Dip
Helibase	Condon Helibase	47° 32.378' N	113° 43.294' W	3600	Type 2/3 approved
Helispot	H-1	47° 22.362' N	113° 39.711' W	4600	Type 2/3 approved
Helispot	H-11	47° 14.579' N	113° 33.932' W	4200	Type 3 approved
Helispot	H-2	47° 21.054' N	113° 36.849' W	4300	Type 2/3 power takeoff
Helispot	H-20	47° 17.822' N	113° 35.599' W	4200	Type 2/3 approved
Helispot	H-21	47° 19.200' N	113° 38.500' W		Type 2/3 approved and needs dust abatement
Helispot	H-22	47° 19.149' N	113° 38.104' W	4800	Approved 8/1
Helispot	H-26	47° 19.168' N	113° 41.408' W	7100	Approved for Type 2/3
Helispot	H-3	47° 22.894' N	113° 40.154' W	4400	Type 3 approved
Helispot	H-4	47° 22.340' N	113° 40.413' W	4800	Type 2/3 approved and needs dust abatement
Helispot	H-5	47° 24.022' N	113° 42.599' W	4400	Type 2/3 approved. Emergency use only private. Life flight uses this spot would be good for rendezvous with agency aircraft or Two Bear Air hoist to Life Flight transfer.
Helispot	H-6	47° 22.434' N	113° 41.905' W	4500	Type 2/3 approved and needs dust abatement
Helispot	H-7	47° 21.322' N	113° 41.716' W	5400	
Helispot	H-8	47° 24.349' N	113° 43.522' W	4300	Proposed helispot Lindbergh Lake CG
Repeater	CMD	47° 19.199' N	113° 30.815' W		
Repeater	CMD 10	113° 41.626' W	113° 41.626' W		
Repeater	CMD9	47° 11.400' N	113° 21.484' W		