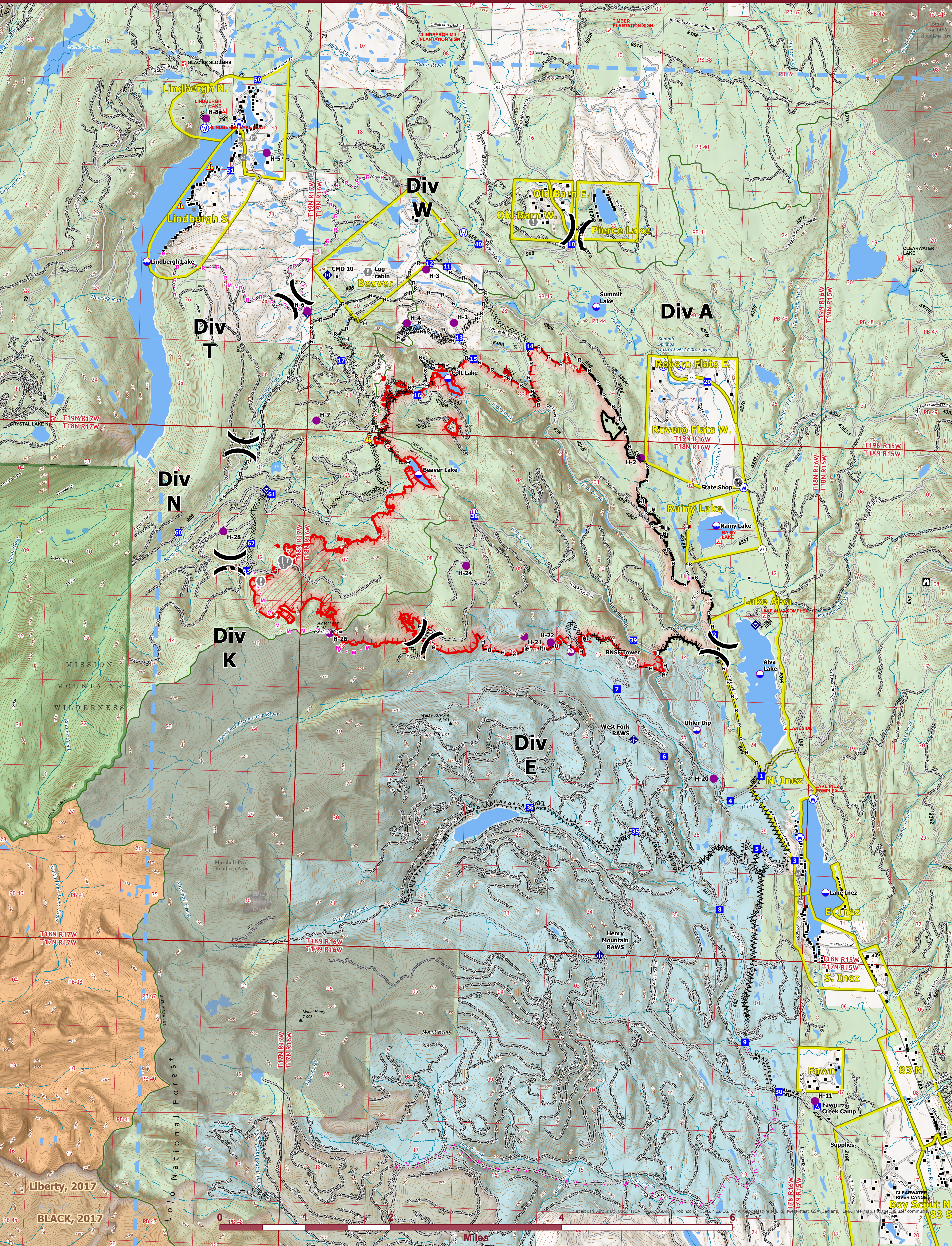




OPERATIONS



Colt Fire
 MT-SWS-200549
 8/4/2023
 7,179 Acres

Fire perimeter updated from IR on 8/3/2023 @ 2105hrs

- | | | | | |
|-------------------------|-----------------------------------|---------------------------------|-------------------------------|-----------------------------------|
| ● Label Point | ⚡ Mobile Weather Unit | — Access or Improved Road | ▭ Ranger District Boundary | ▭ 2013-2021 |
| ⚡ Dip Site | 📶 Internet Access | — Temporary Flight Restriction | ▭ FS Wilderness Boundary | ▭ 2000-2012 |
| ⚡ Helispot | 📶 Repeater | ▭ Contained | ▭ Forest Service Roads Closed | ▭ Bureau of Indian Affairs (BIA) |
| ⚡ Sling Site | ⚠ Hazard | ▭ Uncontained | ▭ Local Connector | ▭ Bureau of Land Management (BLM) |
| ⚡ Improved Landing Area | 💧 Water Source | ▭ Wildfire Daily Fire Perimeter | ▭ Local Road | ▭ State |
| ⚡ Division Break | ⚡ Completed Dozer Line | ▭ IR Intense Heat | ▭ Trail | ▭ US Forest Service (USFS) |
| ⚡ Drop Point | ▭ Completed Fuel Break | ▭ Evacuation Areas | ▭ Perennial Stream | ▭ Private |
| ⚡ Camp | ▭ Completed Hand Line | ▭ Structures | ▭ Intermittent Stream | ▭ Undetermined |
| ⚡ Lookout | ▭ Completed Road as Line | ▭ Campground | ▭ Perennial NHDWaterbody | ▭ USFS Roadless Areas |
| ⚡ Hot Spot - Spot Fire | ▭ Planned Fuel Break | ▭ Trailhead | ▭ Perennial NHDArea | ▭ USFS Wilderness |
| ⚡ Value at Risk | ▭ Planned Hand Line | ▭ Boating Site | ▭ Historic Fire 2016-2018 | |
| ⚡ Other | ▭ Planned Mixed Construction Line | ▭ Interpretive Site | ▭ Historic Fire 2010-2015 | |
| ⚡ Gate | ▭ Planned Road as Line | ▭ Administrative FS Boundary | ▭ Historic Fire 2000-2009 | |



Northern Rockies IMT-1
 8/4/2023 0405
 North American 1983 Datum, LatLong Grid

Operations