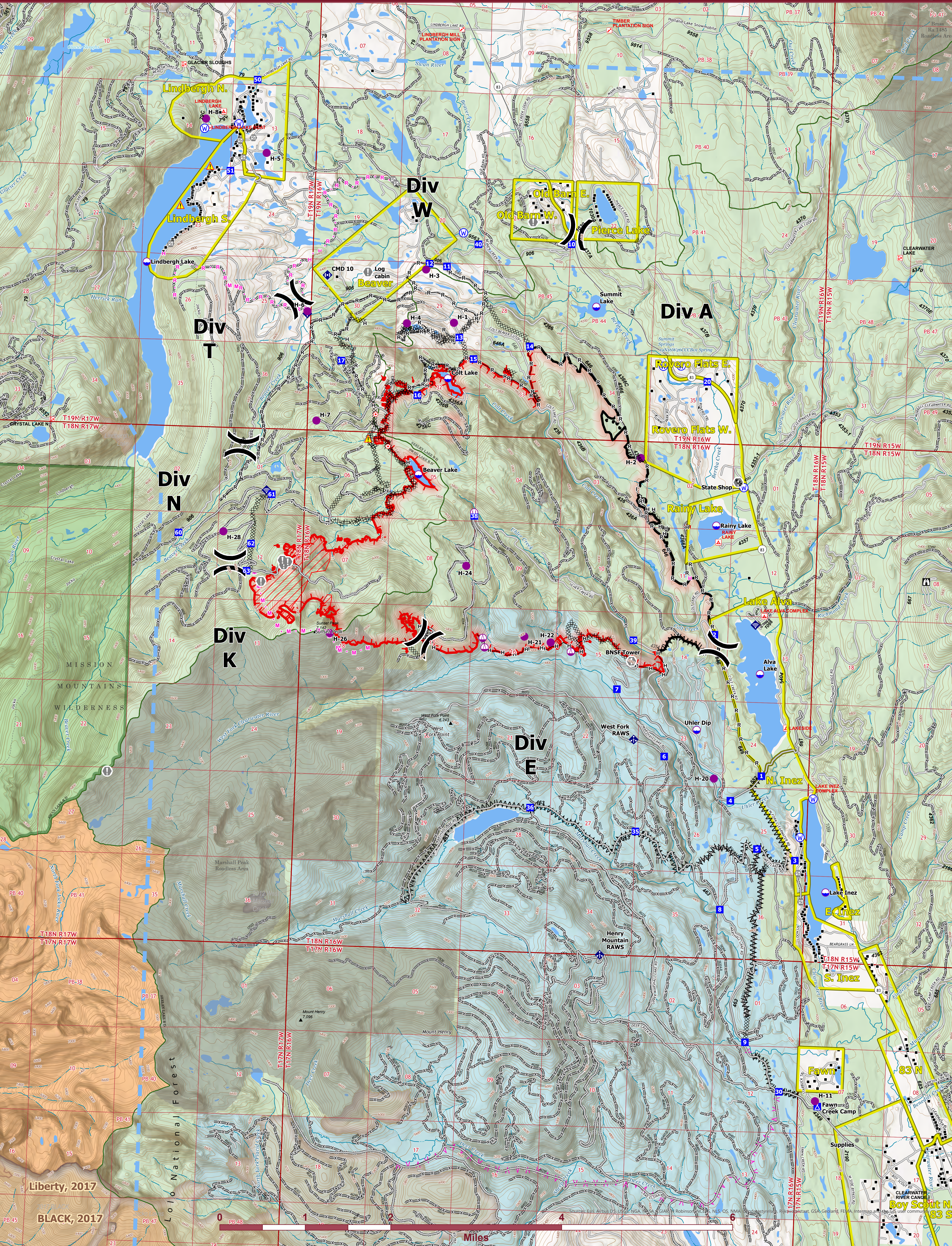




# OPERATIONS



**Colt Fire**  
 MT-SWS-200549  
 8/5/2023  
 7,179 Acres

*Fire perimeter updated from IR on 8/3/2023 @ 2105hrs*

- |                         |                                   |                                 |                               |                                   |
|-------------------------|-----------------------------------|---------------------------------|-------------------------------|-----------------------------------|
| ● Label Point           | ⚡ Mobile Weather Unit             | — Access or Improved Road       | ▭ Ranger District Boundary    | ▭ 2013-2021                       |
| ⚡ Dip Site              | 📶 Internet Access                 | — Temporary Flight Restriction  | ▭ FS Wilderness Boundary      | ▭ 2000-2012                       |
| ⚡ Helispot              | 📶 Repeater                        | ▭ Contained                     | ▭ Forest Service Roads Closed | ▭ Bureau of Indian Affairs (BIA)  |
| ⚡ Sling Site            | ⚠ Hazard                          | ▭ Uncontained                   | ▭ Local Connector             | ▭ Bureau of Land Management (BLM) |
| ⚡ Improved Landing Area | 💧 Water Source                    | ▭ Wildfire Daily Fire Perimeter | ▭ Local Road                  | ▭ State                           |
| ⚡ Division Break        | ⚡ Completed Dozer Line            | ▭ IR Intense Heat               | ▭ Trail                       | ▭ US Forest Service (USFS)        |
| ⚡ Drop Point            | ▭ Completed Fuel Break            | ▭ Evacuation Areas              | ▭ Perennial Stream            | ▭ Private                         |
| ⚡ Camp                  | ▭ Completed Hand Line             | ▭ Structures                    | ▭ Intermittent Stream         | ▭ Undetermined                    |
| ⚡ Lookout               | ▭ Completed Road as Line          | ▭ Campground                    | ▭ Perennial NHDWaterbody      | ▭ USFS Roadless Areas             |
| ⚡ Hot Spot - Spot Fire  | ▭ Planned Fuel Break              | ▭ Trailhead                     | ▭ Perennial NHDArea           | ▭ USFS Wilderness                 |
| ⚡ Value at Risk         | ▭ Planned Hand Line               | ▭ Boating Site                  | ▭ Historic Fire 2016-2018     |                                   |
| ⚡ Other                 | ▭ Planned Mixed Construction Line | ▭ Interpretive Site             | ▭ Historic Fire 2010-2015     |                                   |
| ⚡ Gate                  | ▭ Planned Road as Line            | ▭ Administrative FS Boundary    | ▭ Historic Fire 2000-2009     |                                   |



Northern Rockies IMT-1  
 8/4/2023 2209  
 North American 1983 Datum, LatLong Grid

Operations