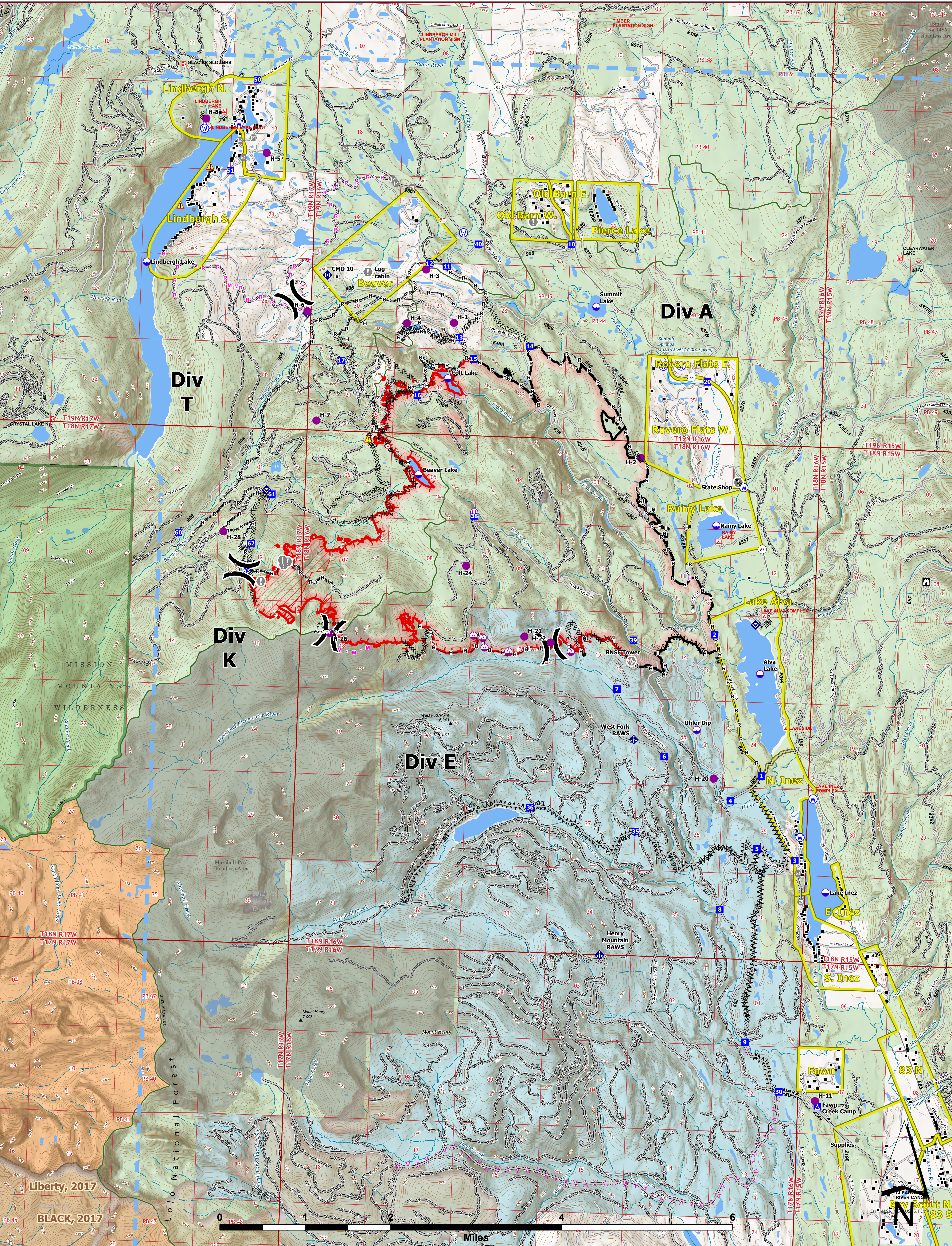




OPERATIONS



Colt Fire
 MT-SWS-200549
8/7/2023
 7,179 Acres

Fire perimeter updated from IR on 8/3/2023 @ 2105hrs

- | | | | | |
|---------------------------|-----------------------------------|---------------------------------|-------------------------------|-----------------------------------|
| ● Label Point | ◆ Mobile Weather Unit | — Access or Improved Road | ▭ Ranger District Boundary | ■ 2013-2021 |
| ○ Dip Site | ◆ Internet Access | — Temporary Flight Restriction | ▭ FS Wilderness Boundary | ■ 2000-2012 |
| ● Helispot | ◆ Repeater | — Contained | ▭ Forest Service Roads Closed | ■ Bureau of Indian Affairs (BIA) |
| ○ Sling Site | ▲ Hazard | — Uncontained | — Local Connector | ■ Bureau of Land Management (BLM) |
| ○ Unimproved Landing Area | ○ Water Source | — Wildfire Daily Fire Perimeter | — Local Road | ■ State |
| ⊗ Division Break | ⊗ Completed Dozer Line | — IR Intense Heat | — Trail | ■ US Forest Service (USFS) |
| ■ Drop Point | ▲ Completed Fuel Break | — Evacuation Areas | — Perennial Stream | ■ Private |
| ▲ Camp | — Completed Hand Line | ■ Structures | — Intermittent Stream | ■ Undetermined |
| ○ Lookout | — Completed Road as Line | ▲ Campground | — Perennial NHDWaterbody | ■ USFS Roadless Areas |
| ○ Hot Spot - Spot Fire | — Planned Fuel Break | ▲ Trailhead | — Perennial NHDArea | ■ USFS Wilderness |
| ● Value at Risk | — Planned Hand Line | ○ Boating Site | — Historic Fire 2016-2018 | |
| ● Other | — Planned Mixed Construction Line | ○ Interpretive Site | — Historic Fire 2010-2015 | |
| ○ Gate | — Planned Road as Line | — Administrative FS Boundary | — Historic Fire 2000-2009 | |



Northern Rockies IMT-5
 8/6/2023 2226
 North American 1983 Datum, Lat/Long Grid