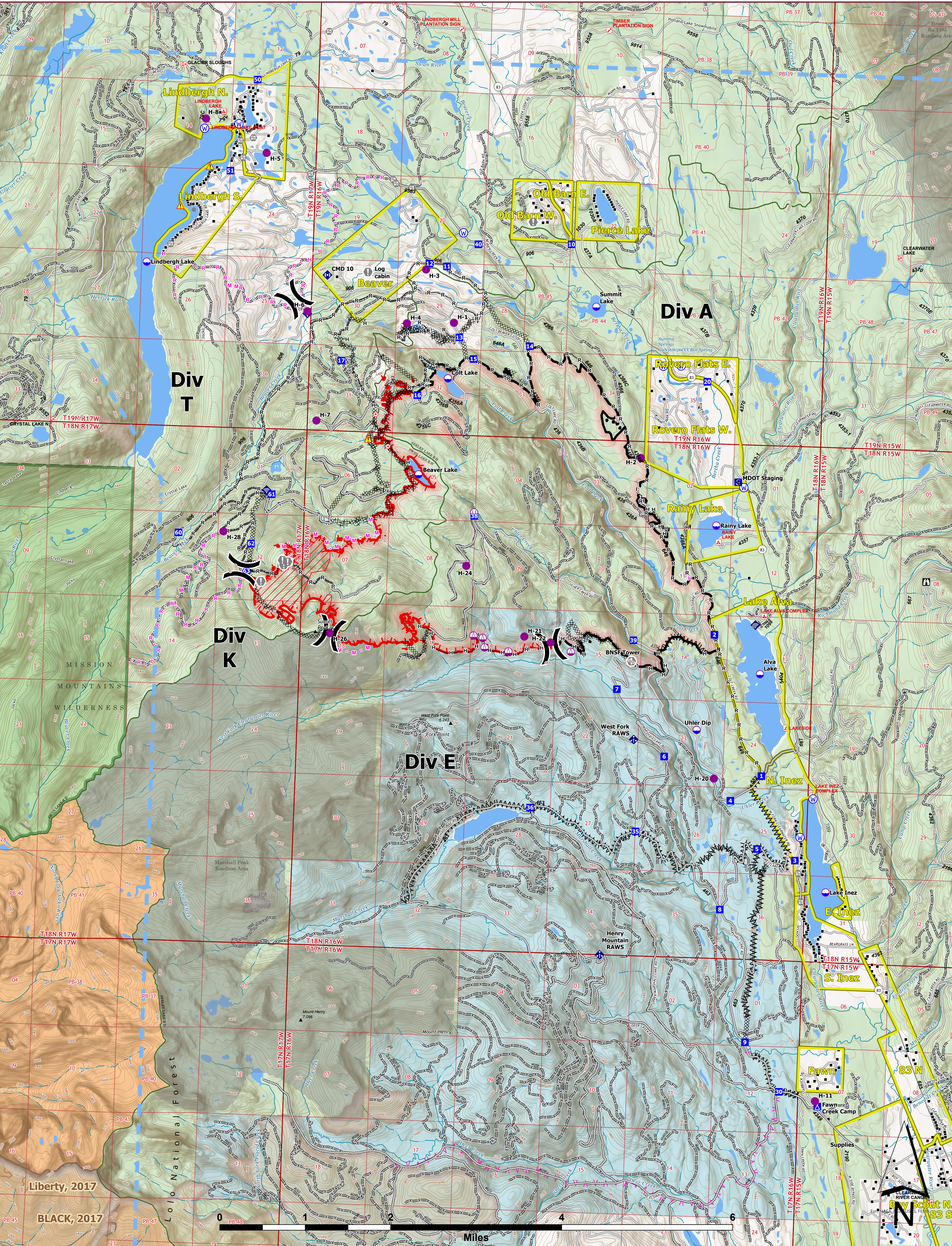




OPERATIONS



Colt Fire
 MT-SWS-200549
8/8/2023
 7,179 Acres

Fire perimeter updated from IR on 8/3/2023 @ 2105hrs

- | | | | | |
|---------------------------|-----------------------------------|---------------------------------|-------------------------------|-----------------------------------|
| ● Label Point | ⬇ Gate | ⬆ Planned Road as Line | ⬆ Administrative FS Boundary | ⬆ Historic Fire 2000-2009 |
| ⬇ Dip Site | ⬆ Mobile Weather Unit | ⬆ Access or Improved Road | ⬆ Ranger District Boundary | ⬆ 2013-2021 |
| ⬆ Helispot | ⬆ Internet Access | ⬆ Temporary Flight Restriction | ⬆ FS Wilderness Boundary | ⬆ 2000-2012 |
| ⬆ Sling Site | ⬆ Repeater | ⬆ Contained | ⬆ Forest Service Roads Closed | ⬆ Bureau of Indian Affairs (BIA) |
| ⬆ Unimproved Landing Area | ⬆ Hazard | ⬆ Uncontained | ⬆ Local Connector | ⬆ Bureau of Land Management (BLM) |
| ⬆ Division Break | ⬆ Water Source | ⬆ Wildfire Daily Fire Perimeter | ⬆ Local Road | ⬆ State |
| ⬆ Drop Point | ⬆ Completed Dozer Line | ⬆ IR Intense Heat | ⬆ Trail | ⬆ US Forest Service (USFS) |
| ⬆ Camp | ⬆ Completed Fuel Break | ⬆ Evacuation Areas | ⬆ Perennial Stream | ⬆ Private |
| ⬆ Staging Area | ⬆ Completed Hand Line | ⬆ Structures | ⬆ Intermittent Stream | ⬆ Undetermined |
| ⬆ Lookout | ⬆ Completed Road as Line | ⬆ Campground | ⬆ Perennial NHDWaterbody | ⬆ USFS Roadless Areas |
| ⬆ Hot Spot - Spot Fire | ⬆ Planned Fuel Break | ⬆ Trailhead | ⬆ Perennial NHDArea | ⬆ USFS Wilderness |
| ⬆ Value at Risk | ⬆ Planned Hand Line | ⬆ Boating Site | ⬆ Historic Fire 2016-2018 | |
| ⬆ Other | ⬆ Planned Mixed Construction Line | ⬆ Interpretive Site | ⬆ Historic Fire 2010-2015 | |



Northern Rockies IMT-5
 8/7/2023 2235
 North American 1983 Datum, Lat/Long Grid