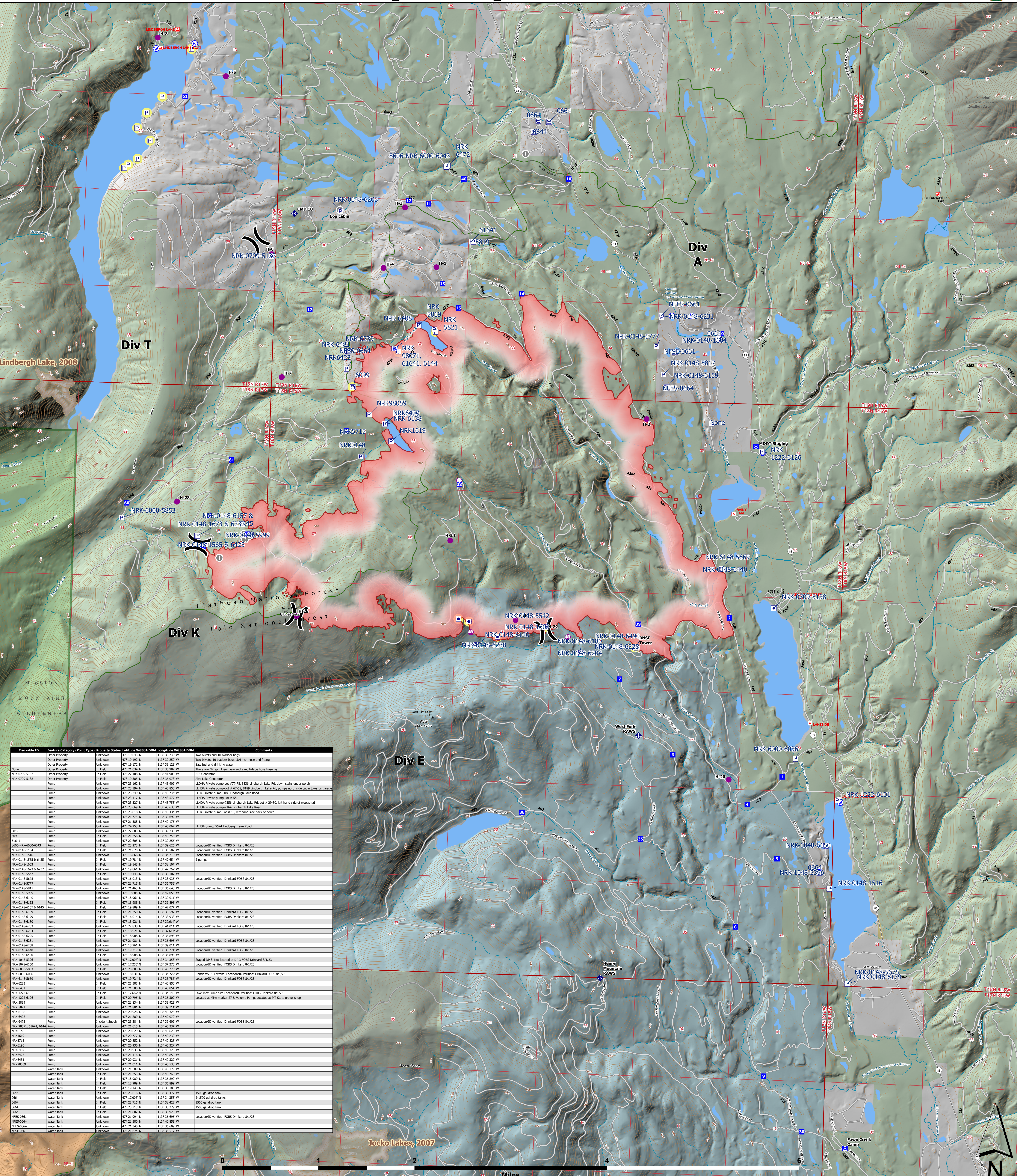


Accountable Property



| Trackable ID | Feature Category (Point Type) | Property Status | Latitude WGS84 DDM | Longitude WGS84 DDM | Comments |
|---------------|-------------------------------|-----------------|--------------------|---------------------|---|
| NRK-0148-6203 | Other Property | Unknown | 47° 20.042' N | 113° 38.733' W | Two blivets and 10 bladder bags |
| NRK-0148-6231 | Other Property | Unknown | 47° 20.192' N | 113° 39.250' W | Two blivets, 20 bladder bags, 3/4 inch hose and fitting |
| NRK-0148-6231 | Other Property | Unknown | 47° 20.172' N | 113° 39.121' W | One fuel and drinking water |
| NRK-0148-6231 | Other Property | In Field | 47° 20.036' N | 113° 35.982' W | Three 50 NR sprayers here and a multi-type hose box. |
| NRK-0148-6231 | Other Property | In Field | 47° 20.408' N | 113° 41.803' W | Hot Generator |
| NRK-0148-6231 | Other Property | In Field | 47° 20.385' N | 113° 35.073' W | Alka Seltzer |
| NRK-0148-6231 | Pump | Unknown | 47° 21.182' N | 113° 43.909' W | LUKKA Private pump Lot #77-78, 8136 Lindbergh Lake Rd, down stairs under porch |
| NRK-0148-6231 | Pump | Unknown | 47° 21.199' N | 113° 43.857' W | LUKKA Private pump Lot # 87-88, 8189 Lindbergh Lake Rd, pumps north side cabin towards garage |
| NRK-0148-6231 | Pump | Unknown | 47° 23.248' N | 113° 43.734' W | LUKKA Private pump 8080 Lindbergh Lake Road |
| NRK-0148-6231 | Pump | Unknown | 47° 23.527' N | 113° 43.753' W | LUKKA Private pump Lot # 58 |
| NRK-0148-6231 | Pump | Unknown | 47° 23.669' N | 113° 43.635' W | LUKKA Private pump 7550 Lindbergh Lake Rd, Lot # 29-30, left hand side of woodshed |
| NRK-0148-6231 | Pump | Unknown | 47° 23.818' N | 113° 43.434' W | LUKKA Private pump Lot # 18, left hand side back of porch |
| NRK-0148-6231 | Pump | Unknown | 47° 21.778' N | 113° 39.692' W | |
| NRK-0148-6231 | Pump | Unknown | 47° 21.589' N | 113° 40.176' W | |
| NRK-0148-6231 | Pump | Unknown | 47° 21.528' N | 113° 40.907' W | LUKKA pump, 5524 Lindbergh Lake Road |
| NRK-0148-6231 | Pump | Unknown | 47° 22.602' N | 113° 39.230' W | |
| NRK-0148-6231 | Pump | Unknown | 47° 22.298' N | 113° 40.769' W | |
| NRK-0148-6231 | Pump | Unknown | 47° 22.605' N | 113° 39.256' W | |
| NRK-0148-6231 | Pump | In Field | 47° 23.272' N | 113° 39.626' W | Location/D verified: FOPS Drinkard B/U/23 |
| NRK-0148-6231 | Pump | In Field | 47° 23.618' N | 113° 39.502' W | Location/D verified: FOPS Drinkard B/U/23 |
| NRK-0148-6231 | Pump | Unknown | 47° 23.866' N | 113° 34.215' W | Location/D verified: FOPS Drinkard B/U/23 |
| NRK-0148-6231 | Pump | In Field | 47° 23.527' N | 113° 42.054' W | 2 pumps |
| NRK-0148-6231 | Pump | Unknown | 47° 23.669' N | 113° 38.107' W | |
| NRK-0148-6231 | Pump | Unknown | 47° 23.818' N | 113° 42.767' W | |
| NRK-0148-6231 | Pump | In Field | 47° 23.818' N | 113° 38.107' W | |
| NRK-0148-6231 | Pump | Unknown | 47° 23.618' N | 113° 33.935' W | Location/D verified: Drinkard FOPS B/U/23 |
| NRK-0148-6231 | Pump | In Field | 47° 21.710' N | 113° 36.792' W | Location/D verified: FOPS Drinkard B/U/23 |
| NRK-0148-6231 | Pump | Unknown | 47° 21.463' N | 113° 44.451' W | Location/D verified: FOPS Drinkard B/U/23 |
| NRK-0148-6231 | Pump | Unknown | 47° 19.887' N | 113° 42.055' W | |
| NRK-0148-6231 | Pump | In Field | 47° 20.961' N | 113° 39.011' W | |
| NRK-0148-6231 | Pump | In Field | 47° 19.989' N | 113° 40.074' W | |
| NRK-0148-6231 | Pump | In Field | 47° 20.385' N | 113° 38.507' W | Location/D verified: Drinkard FOPS B/U/23 |
| NRK-0148-6231 | Pump | In Field | 47° 20.014' N | 113° 33.933' W | Location/D verified: FOPS Drinkard B/U/23 |
| NRK-0148-6231 | Pump | In Field | 47° 20.921' N | 113° 37.614' W | Location/D verified: Drinkard FOPS B/U/23 |
| NRK-0148-6231 | Pump | In Field | 47° 23.828' N | 113° 40.111' W | Location/D verified: Drinkard FOPS B/U/23 |
| NRK-0148-6231 | Pump | In Field | 47° 23.921' N | 113° 37.614' W | |
| NRK-0148-6231 | Pump | In Field | 47° 23.921' N | 113° 37.614' W | |
| NRK-0148-6231 | Pump | Unknown | 47° 21.981' N | 113° 36.695' W | Location/D verified: Drinkard FOPS B/U/23 |
| NRK-0148-6231 | Pump | Unknown | 47° 18.961' N | 113° 39.011' W | |
| NRK-0148-6231 | Pump | Unknown | 47° 19.738' N | 113° 38.793' W | Location/D verified: Drinkard FOPS B/U/23 |
| NRK-0148-6231 | Pump | In Field | 47° 18.988' N | 113° 36.898' W | |
| NRK-0148-6231 | Pump | Unknown | 47° 21.007' N | 113° 34.353' W | Staged DP 3, not located at DP 3 FOPS Drinkard B/U/23 |
| NRK-0148-6231 | Pump | Unknown | 47° 21.250' N | 113° 34.279' W | Location/D verified: FOPS Drinkard B/U/23 |
| NRK-0148-6231 | Pump | In Field | 47° 20.002' N | 113° 43.778' W | |
| NRK-0148-6231 | Pump | Unknown | 47° 23.023' N | 113° 39.722' W | Honda and 1/4 tank. Location/D verified: Drinkard FOPS B/U/23 |
| NRK-0148-6231 | Pump | Unknown | 47° 20.724' N | 113° 35.785' W | Location/D verified: Drinkard FOPS B/U/23 |
| NRK-0148-6231 | Pump | In Field | 47° 21.583' N | 113° 40.850' W | |
| NRK-0148-6231 | Pump | In Field | 47° 21.583' N | 113° 40.850' W | |
| NRK-0148-6231 | Pump | Unknown | 47° 17.667' N | 113° 34.146' W | Lake Inlet Pump Site Location/D verified: FOPS Drinkard B/U/23 |
| NRK-0148-6231 | Pump | In Field | 47° 20.796' N | 113° 35.802' W | Located at Mile marker 27.5, Volume Pump, Located at MT State gravel drop. |
| NRK-0148-6231 | Pump | Unknown | 47° 21.854' N | 113° 39.921' W | |
| NRK-0148-6231 | Pump | Unknown | 47° 21.801' N | 113° 39.711' W | |
| NRK-0148-6231 | Pump | Unknown | 47° 20.828' N | 113° 40.320' W | |
| NRK-0148-6231 | Pump | Unknown | 47° 21.889' N | 113° 40.072' W | |
| NRK-0148-6231 | Pump | Incident Supply | 47° 21.294' N | 113° 39.606' W | Location/D verified: Drinkard FOPS B/U/23 |
| NRK-0148-6231 | Pump | Unknown | 47° 21.432' N | 113° 39.606' W | |
| NRK-0148-6231 | Pump | Unknown | 47° 20.624' N | 113° 40.628' W | |
| NRK-0148-6231 | Pump | Unknown | 47° 20.777' N | 113° 40.247' W | |
| NRK-0148-6231 | Pump | Unknown | 47° 20.852' N | 113° 40.628' W | |
| NRK-0148-6231 | Pump | Unknown | 47° 20.932' N | 113° 40.324' W | |
| NRK-0148-6231 | Pump | Unknown | 47° 20.933' N | 113° 40.326' W | |
| NRK-0148-6231 | Pump | Unknown | 47° 21.416' N | 113° 40.859' W | |
| NRK-0148-6231 | Pump | Unknown | 47° 20.931' N | 113° 40.324' W | |
| NRK-0148-6231 | Pump | Unknown | 47° 21.250' N | 113° 40.324' W | |
| NRK-0148-6231 | Water Tank | Unknown | 47° 21.589' N | 113° 40.176' W | |
| NRK-0148-6231 | Water Tank | In Field | 47° 23.272' N | 113° 40.769' W | |
| NRK-0148-6231 | Water Tank | In Field | 47° 18.989' N | 113° 38.899' W | |
| NRK-0148-6231 | Water Tank | In Field | 47° 18.989' N | 113° 38.899' W | |
| NRK-0148-6231 | Water Tank | In Field | 47° 21.415' N | 113° 38.100' W | |
| NRK-0148-6231 | Water Tank | In Field | 47° 23.618' N | 113° 38.477' W | 1500 gal drop tank |
| NRK-0148-6231 | Water Tank | In Field | 47° 23.606' N | 113° 34.253' W | 2-1500 gal drop tanks |
| NRK-0148-6231 | Water Tank | In Field | 47° 23.716' N | 113° 38.422' W | 1500 gal drop tank |
| NRK-0148-6231 | Water Tank | In Field | 47° 23.710' N | 113° 38.279' W | 1500 gal drop tank |
| NRK-0148-6231 | Water Tank | In Field | 47° 21.802' N | 113° 40.850' W | |
| NRK-0148-6231 | Water Tank | Unknown | 47° 21.994' N | 113° 36.696' W | Location/D verified: FOPS Drinkard B/U/23 |
| NRK-0148-6231 | Water Tank | Unknown | 47° 21.589' N | 113° 40.851' W | |
| NRK-0148-6231 | Water Tank | Unknown | 47° 21.340' N | 113° 38.609' W | |
| NRK-0148-6231 | Water Tank | Unknown | 47° 21.674' N | 113° 36.517' W | |

Colt Fire
MT-SWS-200549
8/10/2023
7,202 Acres

- Other Property
- Pump
- Water Tank
- Acct. Prop. No Trackable ID's
- Helispot
- Sling Site
- Unimproved Landing Area
- Division Break
- Drop Point
- Camp
- Staging Area
- Value at Risk
- Mobile Weather Unit
- Repeater
- Water Source
- Wildfire Daily Fire Perimeter
- Campground
- Trailhead
- Boating Site
- Administrative FS Boundary
- Ranger District Boundary
- FS Wilderness Boundary
- Local Connector
- Local Road
- Perennial Stream
- Intermittent Stream
- Perennial NHD Waterbody
- Historic Fire 2010-2015
- Historic Fire 2000-2009
- 2000-2012
- Bureau of Indian Affairs (BIA)
- Bureau of Land Management (BLM)
- State
- US Forest Service (USFS)
- Private
- Undetermined
- USFS Roadless Areas
- USFS Wilderness

