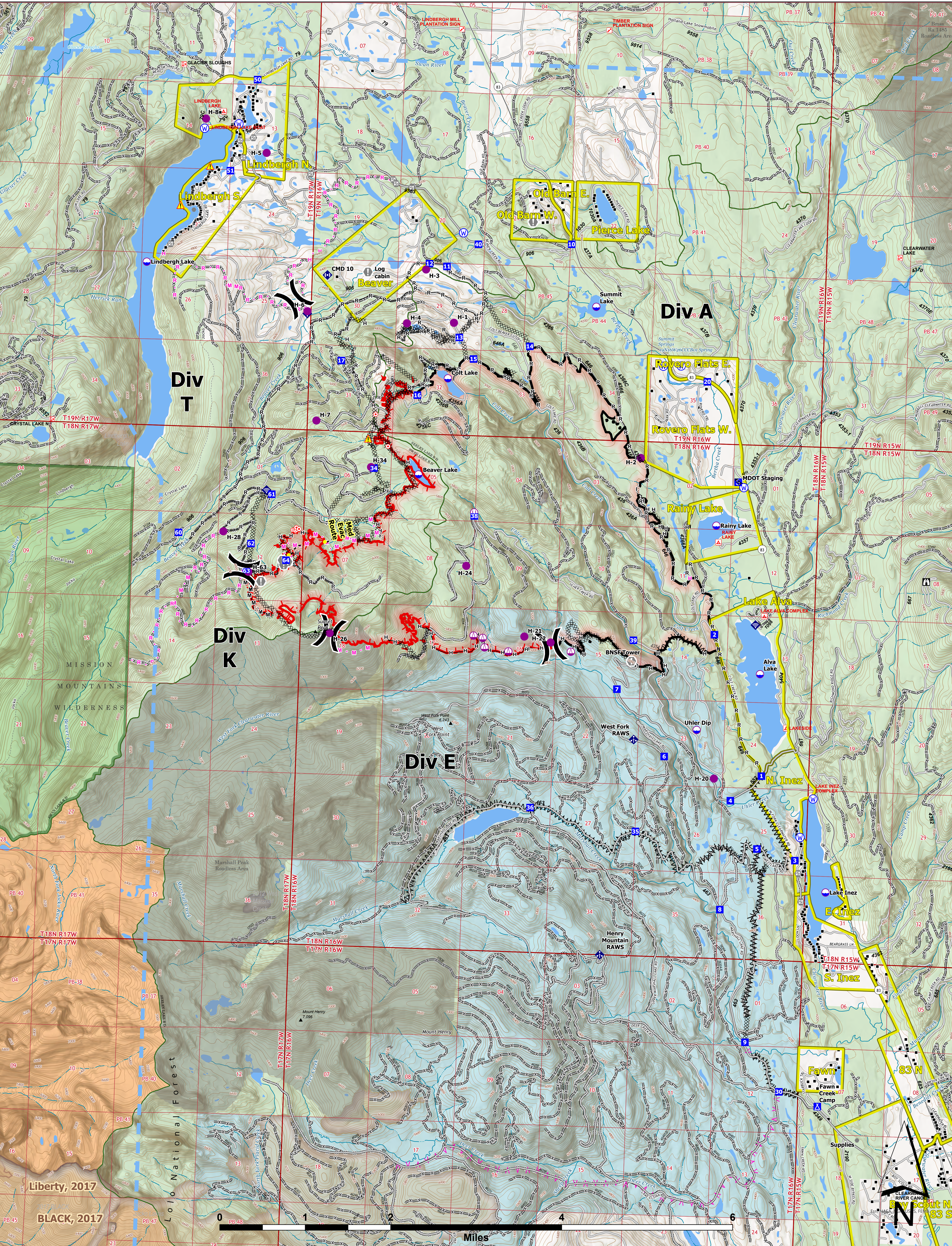




OPERATIONS



Colt Fire
 MT-SWS-200549
8/11/2023
7,202 Acres

Fire perimeter updated from IR on 8/8/2023 @ 2205hrs

- | | | | | |
|---------------------------|---------------------------------------|-------------------------------------|-------------------------------|-----------------------------------|
| ● Label Point | ⬇ Gate | M - Planned Mixed Construction Line | ⊗ Interpretive Site | ■ Historic Fire 2010-2015 |
| ● Dip Site | ⬇ Mobile Weather Unit | R - Planned Road as Line | □ Administrative FS Boundary | ■ Historic Fire 2000-2009 |
| ● Helispot | ⬇ Internet Access | — Access or Improved Road | □ Ranger District Boundary | ■ 2013-2021 |
| ● Sling Site | ⬇ Repeater | — Highlighted Feature | ■ FS Wilderness Boundary | ■ 2000-2012 |
| ○ Unimproved Landing Area | ⚠ Hazard | — Temporary Flight Restriction | — Forest Service Roads Closed | ■ Bureau of Indian Affairs (BIA) |
| X Division Break | ⚡ Water Source | — Contained | — Local Connector | ■ Bureau of Land Management (BLM) |
| ■ Drop Point | ⓧ Completed Dozer Line | — Uncontained | — Local Road | ■ State |
| ■ Camp | ⓧ Completed Fuel Break | — Wildfire Daily Fire Perimeter | — Trail | ■ US Forest Service (USFS) |
| ■ Staging Area | H — Completed Hand Line | ■ Evacuation Areas | — Perennial Stream | ■ Private |
| ■ Lookout | M — Completed Mixed Construction Line | ■ Structures | — Intermittent Stream | ■ Undetermined |
| ● Hot Spot - Spot Fire | R — Completed Road as Line | ■ Campground | ■ Perennial NHDWaterbody | ■ USFS Roadless Areas |
| ● Value at Risk | ▲ Planned Fuel Break | ■ Trailhead | ■ Perennial NHDArea | ■ USFS Wilderness |
| ● Other | H - Planned Hand Line | ■ Boating Site | ■ Historic Fire 2016-2018 | |



Northern Rockies IMT-5
 8/11/2023 0415
 North American 1983 Datum, Lat/Long Grid