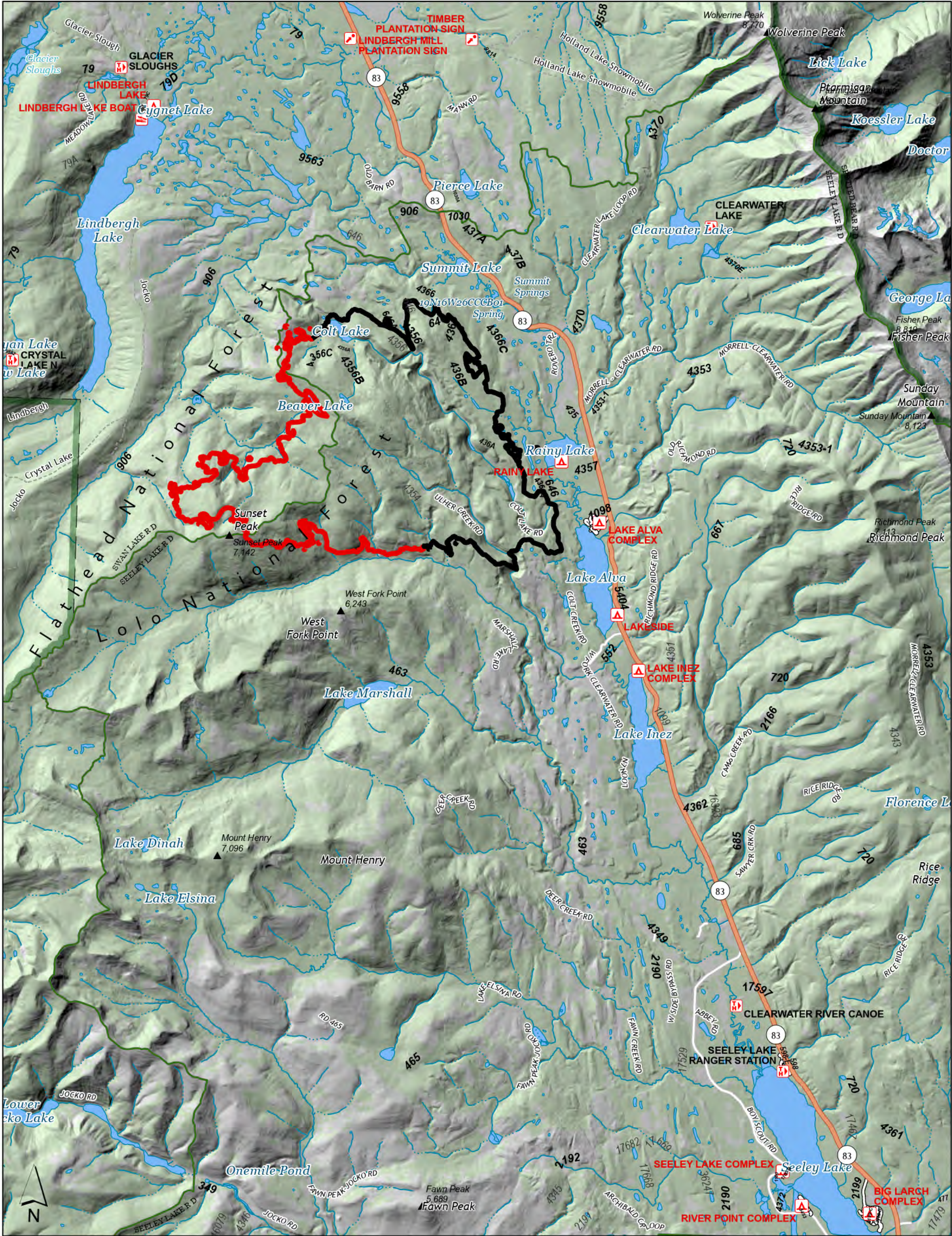


# Colt Fire Public Information



**8/12/2023**

**MT-SWS-200549**

**7,202 acres**

Fire perimeter updated from IR on 8/8/2023 @ 2205hrs

- |   |   |   |  |
|---|---|---|--|
| <ul style="list-style-type: none"> <li>■ Contained</li> <li>■ Uncontained</li> <li>■ FS Wilderness Boundary</li> <li>▲ Summit; Gap</li> <li>▲ Campground</li> <li>▲ Trailhead</li> <li>▲ Boating Site</li> <li>▲ Interpretive Site</li> </ul> | <ul style="list-style-type: none"> <li>□ Administrative FS Boundary</li> <li>□ Ranger District Boundary</li> <li>▲ Summit; Gap</li> <li>▲ Campground</li> <li>▲ Trailhead</li> <li>▲ Boating Site</li> <li>▲ Interpretive Site</li> <li>□ State or Territory</li> </ul> | <ul style="list-style-type: none"> <li>■ County or Equivalent</li> <li>■ Administrative FS Boundary</li> <li>■ Ranger District Boundary</li> <li>■ FS Wilderness Boundary</li> <li>■ Local Connector</li> <li>--- Trail</li> <li>▲ Summit; Gap</li> <li>▲ Campground</li> </ul> | <ul style="list-style-type: none"> <li>▲ Trailhead</li> <li>▲ Boating Site</li> <li>▲ Interpretive Site</li> <li>■ Administrative FS Boundary</li> <li>■ Ranger District Boundary</li> <li>■ FS Wilderness Boundary</li> </ul> |
|---|---|---|--|



NR CIMT 5  
8/12/2023 0800  
North American 1983  
Datum. LatLong Grid