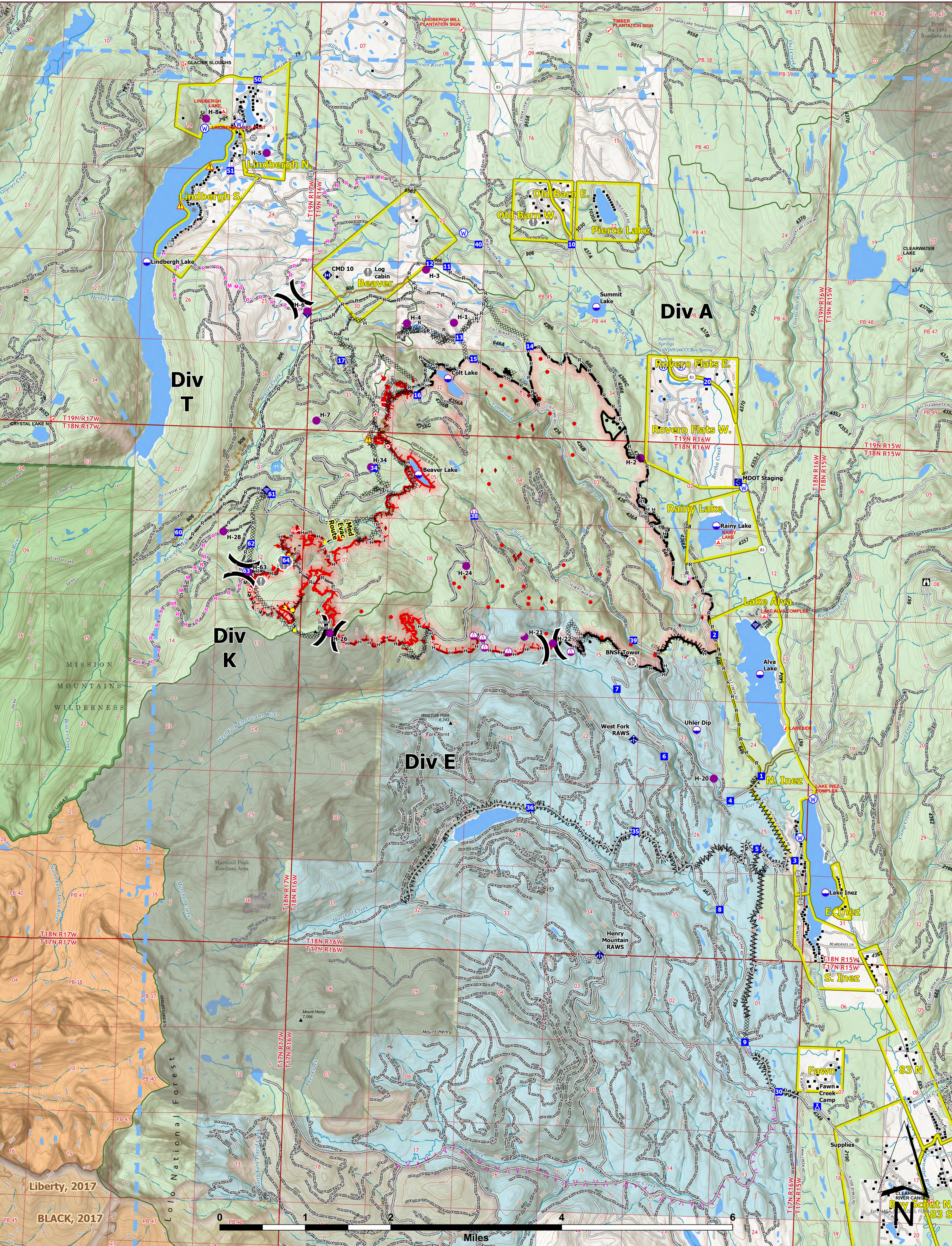




# OPERATIONS



**Colt Fire**  
 MT-SWS-200549  
**8/14/2023**  
 7,202 Acres

Fire perimeter updated from IR on 8/8/2023 @ 2205hrs

- |   |  |   |  |   |
|---|--|---|--|---|
| <ul style="list-style-type: none"> <li>● Label Point</li> <li>● Dip Site</li> <li>● Helispot</li> <li>● Sling Site</li> <li>○ Unimproved Landing Area</li> <li>⌘ Division Break</li> <li>■ Drop Point</li> <li>■ Camp</li> <li>■ Staging Area</li> <li>■ Lookout</li> <li>● Hot Spot - Spot Fire</li> <li>● Value at Risk</li> <li>● Other</li> <li>■ Gate</li> </ul> | <ul style="list-style-type: none"> <li>◆ Mobile Weather Unit</li> <li>◆ Internet Access</li> <li>◆ Repeater</li> <li>▲ Hazard</li> <li>⊗ Water Source</li> <li>⊗ Completed Dozer Line</li> <li>⊗ Completed Fuel Break</li> <li>⊗ Completed Hand Line</li> <li>⊗ Completed Mixed Construction Line</li> <li>⊗ Completed Road as Line</li> <li>⊗ Planned Fuel Break</li> <li>⊗ Planned Hand Line</li> <li>⊗ Planned Mixed Construction Line</li> <li>⊗ Planned Road as Line</li> </ul> | <ul style="list-style-type: none"> <li>— Access or Improved Road</li> <li>— Highlighted Feature</li> <li>— Repair Line</li> <li>— Road Repair</li> <li>— Temporary Flight Restriction</li> <li>— Contained</li> <li>— Uncontained</li> <li>— Wildfire Daily Fire Perimeter</li> <li>— Evacuation Areas</li> <li>— Structures</li> <li>— Campground</li> <li>— Trailhead</li> <li>— Boating Site</li> <li>— Interpretive Site</li> </ul> | <ul style="list-style-type: none"> <li>— Administrative FS Boundary</li> <li>— Ranger District Boundary</li> <li>— FS Wilderness Boundary</li> <li>— Forest Service Roads Closed</li> <li>— Local Connector</li> <li>— Local Road</li> <li>— Trail</li> <li>— Perennial Stream</li> <li>— Intermittent Stream</li> <li>— Perennial NHD Waterbody</li> <li>— Perennial NHD Area</li> <li>— Historic Fire 2016-2018</li> <li>— Historic Fire 2010-2015</li> <li>— Historic Fire 2000-2009</li> </ul> | <ul style="list-style-type: none"> <li>■ Bureau of Indian Affairs (BIA)</li> <li>■ Bureau of Land Management (BLM)</li> <li>■ State</li> <li>■ US Forest Service (USFS)</li> <li>■ Private</li> <li>■ Undetermined</li> <li>■ USFS Roadless Areas</li> <li>■ USFS Wilderness</li> <li>● 20230811_IsolatedHeatSources</li> <li>● 20230811_PossibleHeatSources</li> <li>● 20230811_ScatteredHeat</li> </ul> |
|---|--|---|--|---|



Northern Rockies IMT-5  
 8/14/2023 0437  
 North American 1983 Datum, Lat/Long Grid