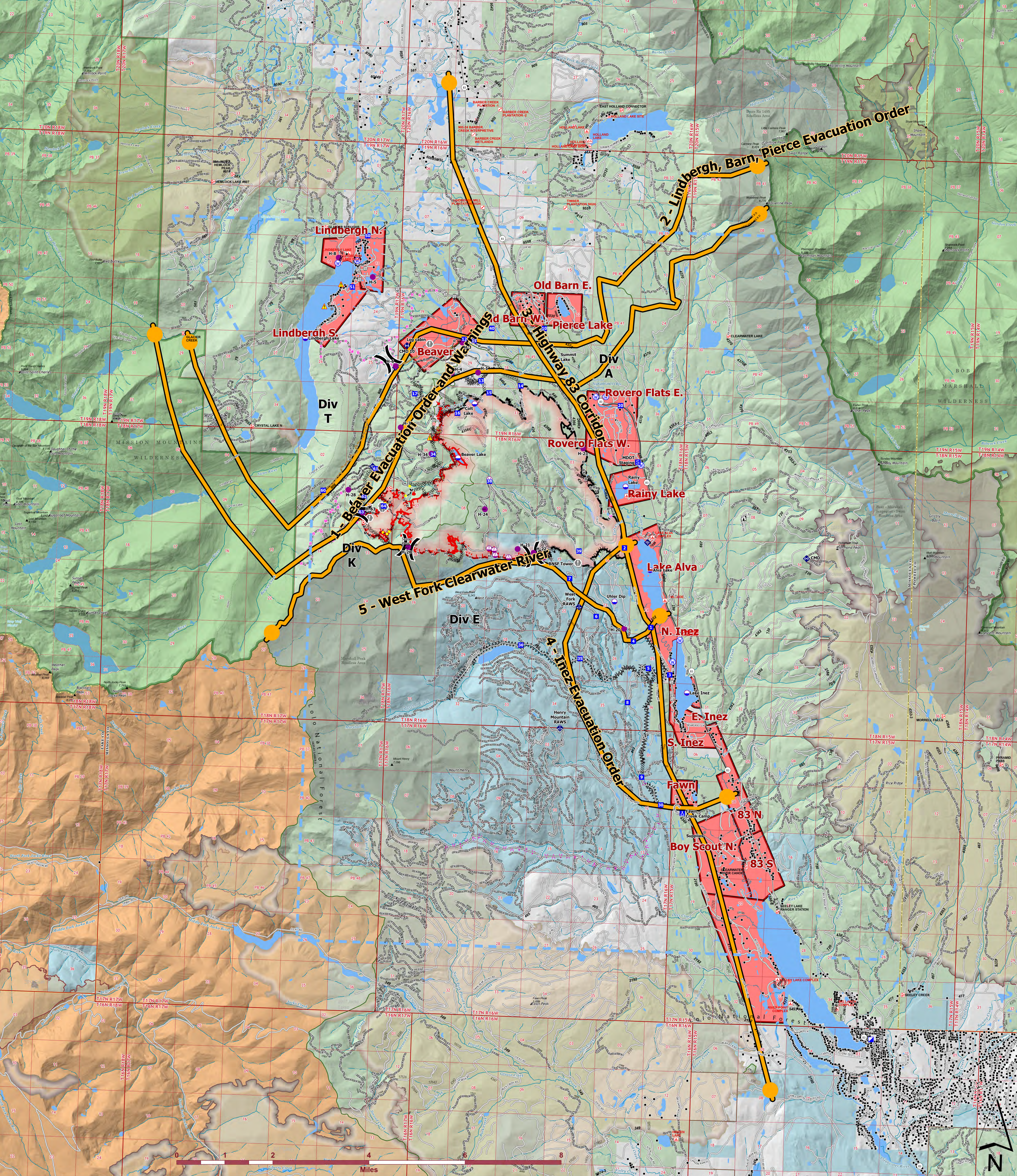




Management Action Points



Colt Fire
 MT-SWS-200549
8/14/2023
 7,202 Acres
 Fire perimeter updated
 from IR on 8/8/2023 @ 2205hrs

- | | | | | |
|---------------------------|------------------------|-------------------------------------|---------------------------------|------------------------------|
| ● Label Point | 🏠 Lookouts | 🚧 Completed Dozer Line | 👉 Highlighted Feature | • Structures |
| ⬇️ Dip Site | 🔥 Hot Spot - Spot Fire | 🚧 Completed Fuel Break | 👉 Management Action Point | 📏 Administrative FS Boundary |
| 📍 Helispot | ⚠️ Value at Risk | 🚧 Completed Hand Line | 👉 Repair Line | 📏 Ranger District Boundary |
| 📍 Sling Site | 🏠 Other | 🚧 Completed Mixed Construction Line | 👉 Road Repair | 📏 FS Wilderness Boundary |
| 📍 Unimproved Landing Area | 🚪 Gate | 🚧 Completed Road as Line | 👉 Temporary Flight Restriction | 📏 Historic Fire 2016-2018 |
| 📍 Division Break | 📡 Mobile Weather Unit | 🚧 Planned Fuel Break | 👉 Contained | 📏 Historic Fire 2010-2015 |
| 📍 Incident Command Post | 📶 Internet Access | 🚧 Planned Hand Line | 👉 Uncontained | 📏 Historic Fire 2000-2009 |
| 📍 Drop Point | 📶 Repeater | 🚧 Planned Mixed Construction Line | 👉 Wildfire Daily Fire Perimeter | |
| 📍 Camp | ⚠️ Hazard | 🚧 Planned Road as Line | 👉 Evacuation Areas | |
| 📍 Staging Area | 💧 Water Source | 🚧 Access or Improved Road | | |

