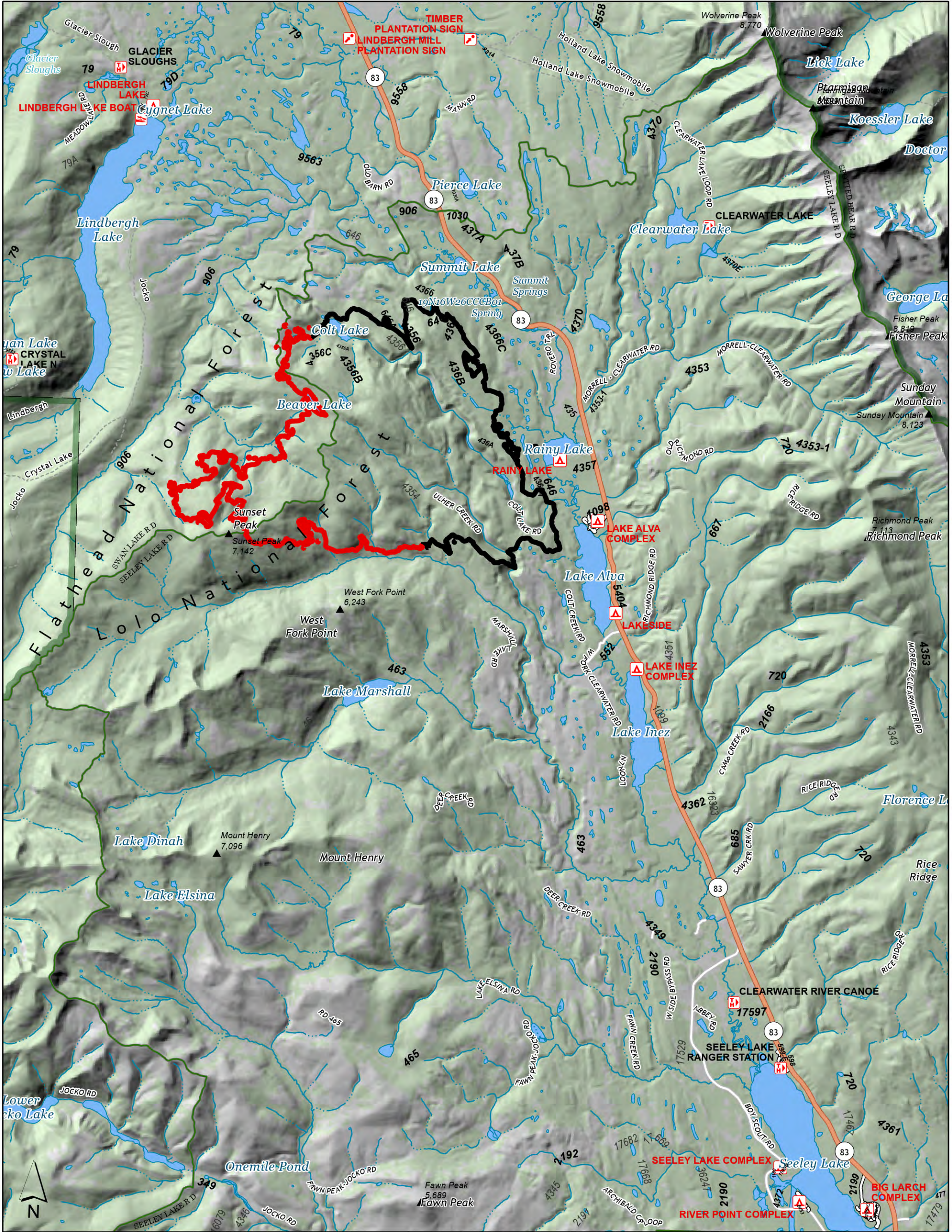


Colt Fire Public Information

8/15/2023

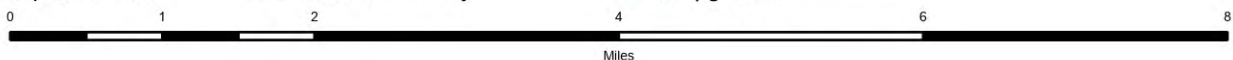


8/15/2023

MT-SWS-200549
7,202 acres

Fire perimeter updated from IR on 8/8/2023 @ 2205hrs

- | | | | |
|---|---|---|--|
| <ul style="list-style-type: none"> ■ Contained ■ Uncontained ■ FS Wilderness Boundary ▲ Summit; Gap ▲ Campground ■ Trailhead ■ Boating Site ■ Interpretive Site | <ul style="list-style-type: none"> □ Administrative FS Boundary □ Ranger District Boundary ▲ Summit; Gap ▲ Campground ■ Trailhead ■ Boating Site ■ Interpretive Site □ State or Territory | <ul style="list-style-type: none"> ■ County or Equivalent ■ Administrative FS Boundary ■ Ranger District Boundary ■ FS Wilderness Boundary ■ Local Connector --- Trail ▲ Summit; Gap ▲ Campground | <ul style="list-style-type: none"> ■ Trailhead ■ Boating Site ■ Interpretive Site ■ Administrative FS Boundary ■ Ranger District Boundary ■ FS Wilderness Boundary |
|---|---|---|--|



NR CIMT 5
8/14/2023 2151
North American 1983
Datum. LatLong Grid