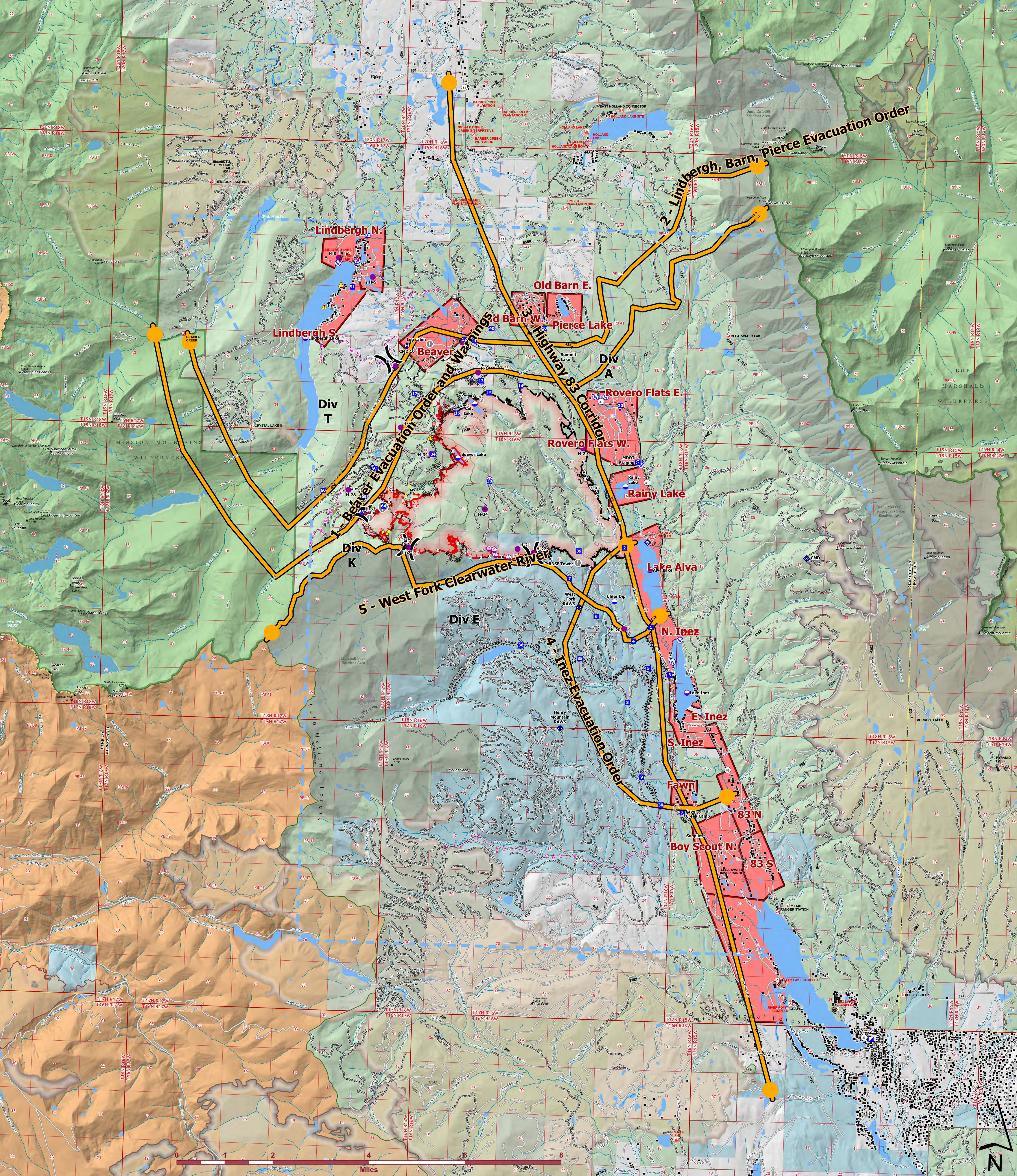




# Management Action Points



**Colt Fire**  
 MT-SWS-200549  
**8/15/2023**  
 7,202 Acres  
 Fire perimeter updated from IR on 8/8/2023 @ 2205hrs

- |                           |                        |                                     |                                 |                              |
|---------------------------|------------------------|-------------------------------------|---------------------------------|------------------------------|
| ● Label Point             | 🏠 Lookouts             | 🚧 Completed Dozer Line              | 👉 Highlighted Feature           | • Structures                 |
| ⦿ Dip Site                | 🔥 Hot Spot - Spot Fire | 🚧 Completed Fuel Break              | 👉 Management Action Point       | ▭ Administrative FS Boundary |
| 📍 Helispot                | ⚠️ Value at Risk       | 🚧 Completed Hand Line               | 👉 Repair Line                   | ▭ Ranger District Boundary   |
| 📍 Sling Site              | 🚧 Other                | 🚧 Completed Mixed Construction Line | 👉 Road Repair                   | ▭ FS Wilderness Boundary     |
| 📍 Unimproved Landing Area | 🚧 Gate                 | 🚧 Completed Road as Line            | 👉 Temporary Flight Restriction  | ▭ Historic Fire 2016-2018    |
| ⌘ Division Break          | 📶 Mobile Weather Unit  | 🚧 Planned Fuel Break                | 👉 Contained                     | ▭ Historic Fire 2010-2015    |
| 📍 Incident Command Post   | 📶 Internet Access      | 🚧 Planned Hand Line                 | 👉 Uncontained                   | ▭ Historic Fire 2000-2009    |
| 📍 Drop Point              | 📶 Repeater             | 🚧 Planned Mixed Construction Line   | 👉 Wildfire Daily Fire Perimeter |                              |
| 📍 Camp                    | ⚠️ Hazard              | 🚧 Planned Road as Line              | 👉 Evacuation Areas              |                              |
| 📍 Staging Area            | 💧 Water Source         | 🚧 Access or Improved Road           |                                 |                              |

