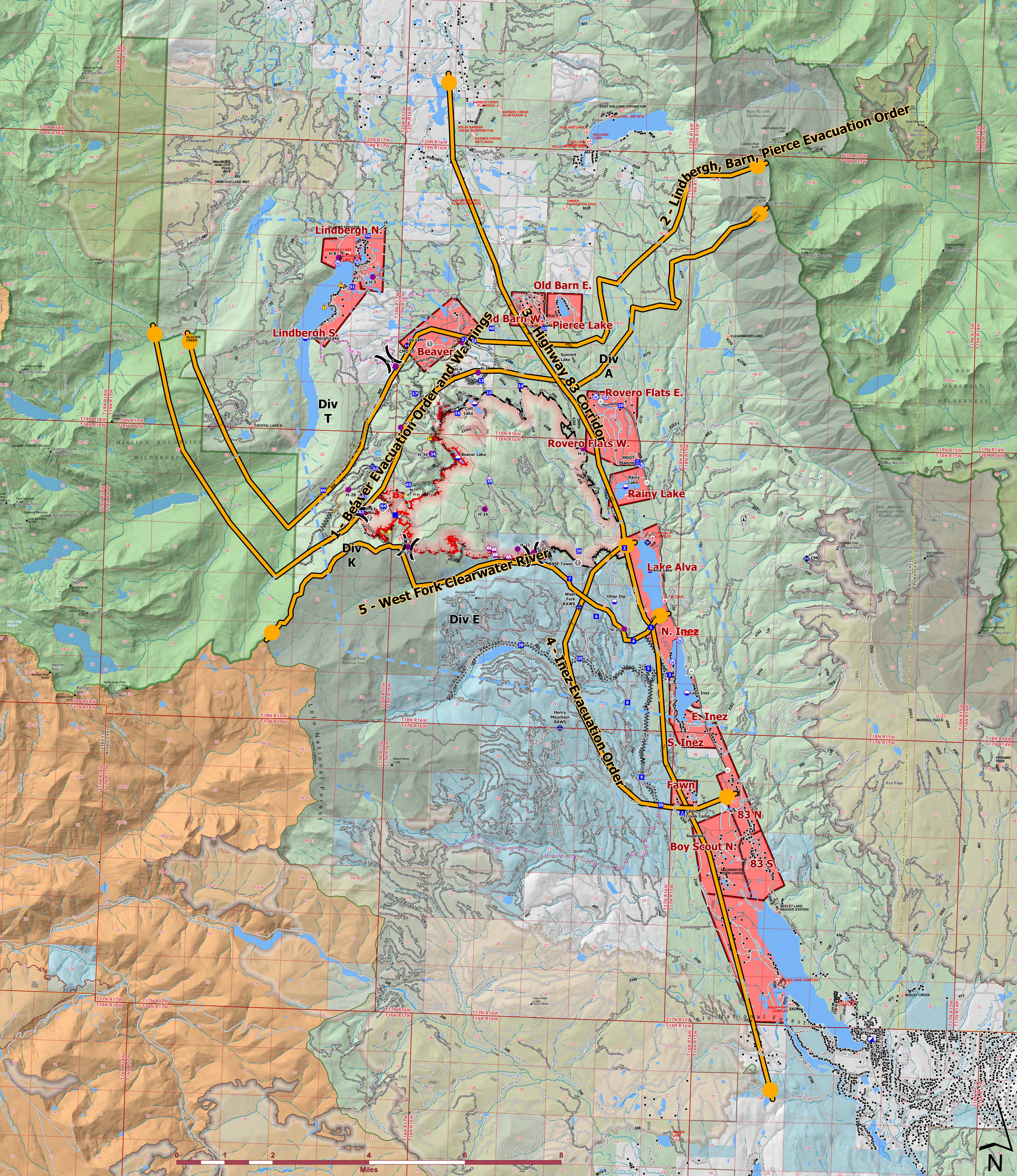




Management Action Points



Colt Fire
 MT-SWS-200549
 8/16/2023
 7,202 Acres
 Fire perimeter updated
 from IR on 8/8/2023 @ 2205hrs

- | | | | | |
|---------------------------|------------------------|-------------------------------------|----------------------------------|------------------------------|
| ● Label Point | 🏠 Lookouts | 🔲 Completed Dozer Line | ● Highlighted Feature | 🔴 Evacuation Areas |
| ⚡ Dip Site | 🔥 Hot Spot - Spot Fire | 🛞 Completed Fuel Break | 📍 Management Action Point | ● Structures |
| 📍 Helispot | ⚠️ Value at Risk | — Completed Hand Line | — Other | 🏠 Administrative FS Boundary |
| 📍 Sling Site | 🚪 Gate | 🚧 Completed Mixed Construction Line | 🔧 Repair Line | 🏠 Ranger District Boundary |
| 📍 Unimproved Landing Area | 📶 Mobile Weather Unit | 🛣️ Completed Road as Line | 🛣️ Road Repair | 🏠 FS Wilderness Boundary |
| ⚡ Division Break | 📶 Internet Access | 🛣️ Planned Fuel Break | 🚫 Temporary Flight Restriction | 🏠 Historic Fire 2016-2018 |
| 📍 Incident Command Post | 📶 Repeater | 🛣️ Planned Hand Line | 🛣️ Contained | 🏠 Historic Fire 2010-2015 |
| 📍 Drop Point | ⚠️ Hazard | 🛣️ Planned Mixed Construction Line | 🛣️ Uncontained | 🏠 Historic Fire 2000-2009 |
| 📍 Camp | 💧 Water Source | 🛣️ Planned Road as Line | 🛣️ Wildfire Daily Fire Perimeter | |
| 📍 Staging Area | | 🛣️ Access or Improved Road | | |

