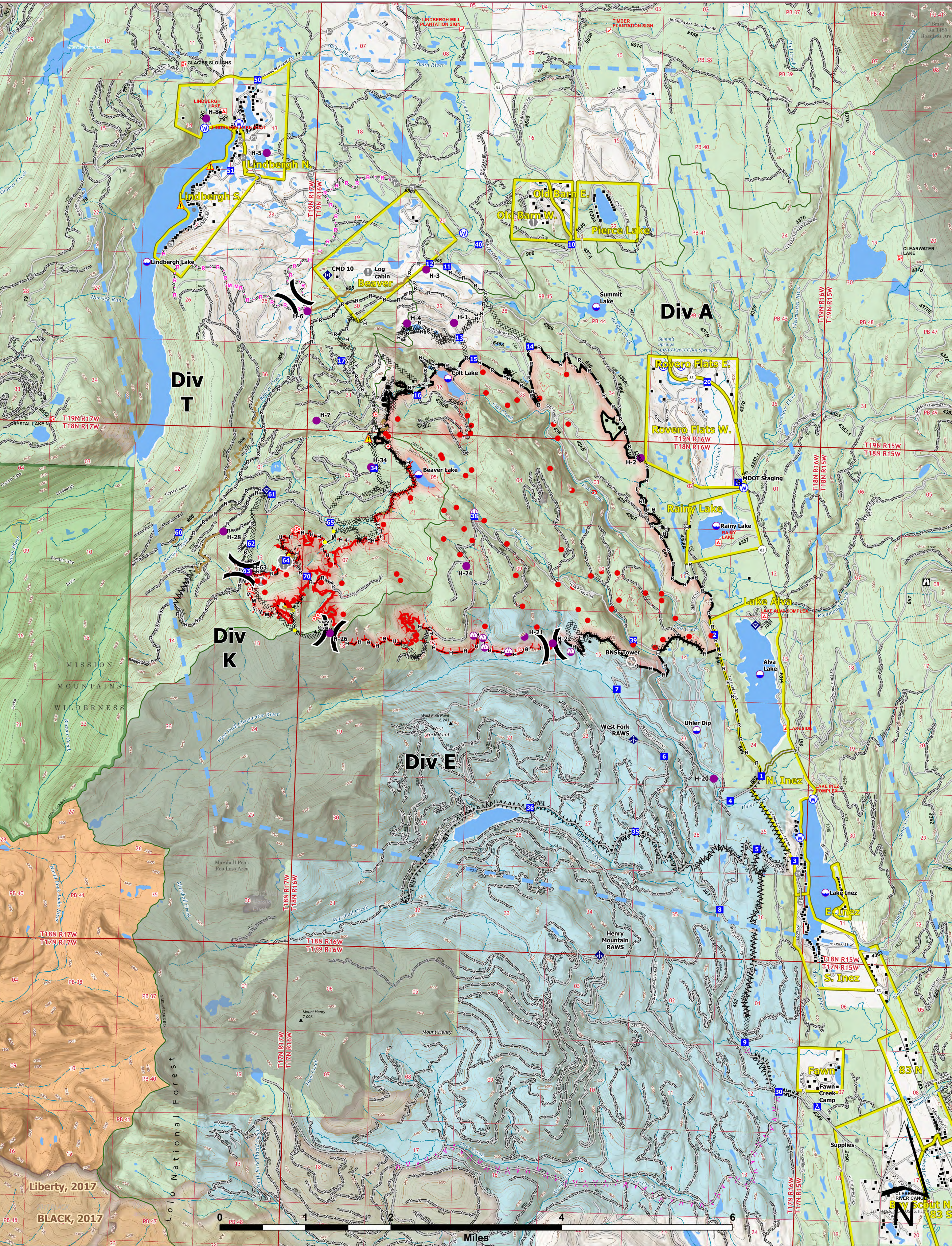




OPERATIONS



Colt Fire
 MT-SWS-200549
8/17/2023
7,202 Acres

Fire perimeter updated from IR on 8/8/2023 @ 2205hrs

- | | | | | |
|---------------------------|-------------------------------------|-------------------------------|---|---|
| ● Label Point | ◆ Mobile Weather Unit | — Access or Improved Road | ▣ Interpretive Site | ■ Historic Fire 2000-2009 |
| ● Dip Site | ◆ Internet Access | — Highlighted Feature | ▣ Administrative FS Boundary | ■ Bureau of Indian Affairs (BIA) |
| ● Helispot | ◆ Repeater | — Ranger District Boundary | ▣ Bureau of Land Management (BLM) | ■ State |
| ● Sling Site | ◆ Hazard | — FS Wilderness Boundary | ▣ US Forest Service (USFS) | ■ USFS Wilderness |
| ○ Unimproved Landing Area | ◆ Water Source | — Forest Service Roads Closed | ▣ Private | ■ USFS Roadless Areas |
| ⌘ Drop Point | ◆ Completed Dozer Line | — Local Connector | ▣ Undetermined | ■ USFS Wilderness |
| ■ Camp | ◆ Completed Fuel Break | — Local Road | ▣ 20230816_2302_Colt_Scattered Fuel Cat | ● 20230816_2302_Colt_Isolated Heat Source |
| ■ Staging Area | ◆ Completed Hand Line | — Trail | ▣ Historic Fire 2016-2018 | |
| ■ Lookout | ◆ Completed Mixed Construction Line | — Perennial Stream | ▣ Historic Fire 2010-2015 | |
| ● Hot Spot - Spot Fire | ◆ Completed Road as Line | — Intermittent Stream | | |
| ● Value at Risk | ◆ Planned Fuel Break | — Perennial NHDWaterbody | | |
| ● Other | ◆ Planned Hand Line | — Perennial NHDArea | | |
| ● Gate | ◆ Planned Mixed Construction Line | — Historic Fire 2016-2018 | | |
| | ◆ Planned Road as Line | — Historic Fire 2010-2015 | | |



North American 1983 Datum, Lat/Long Grid