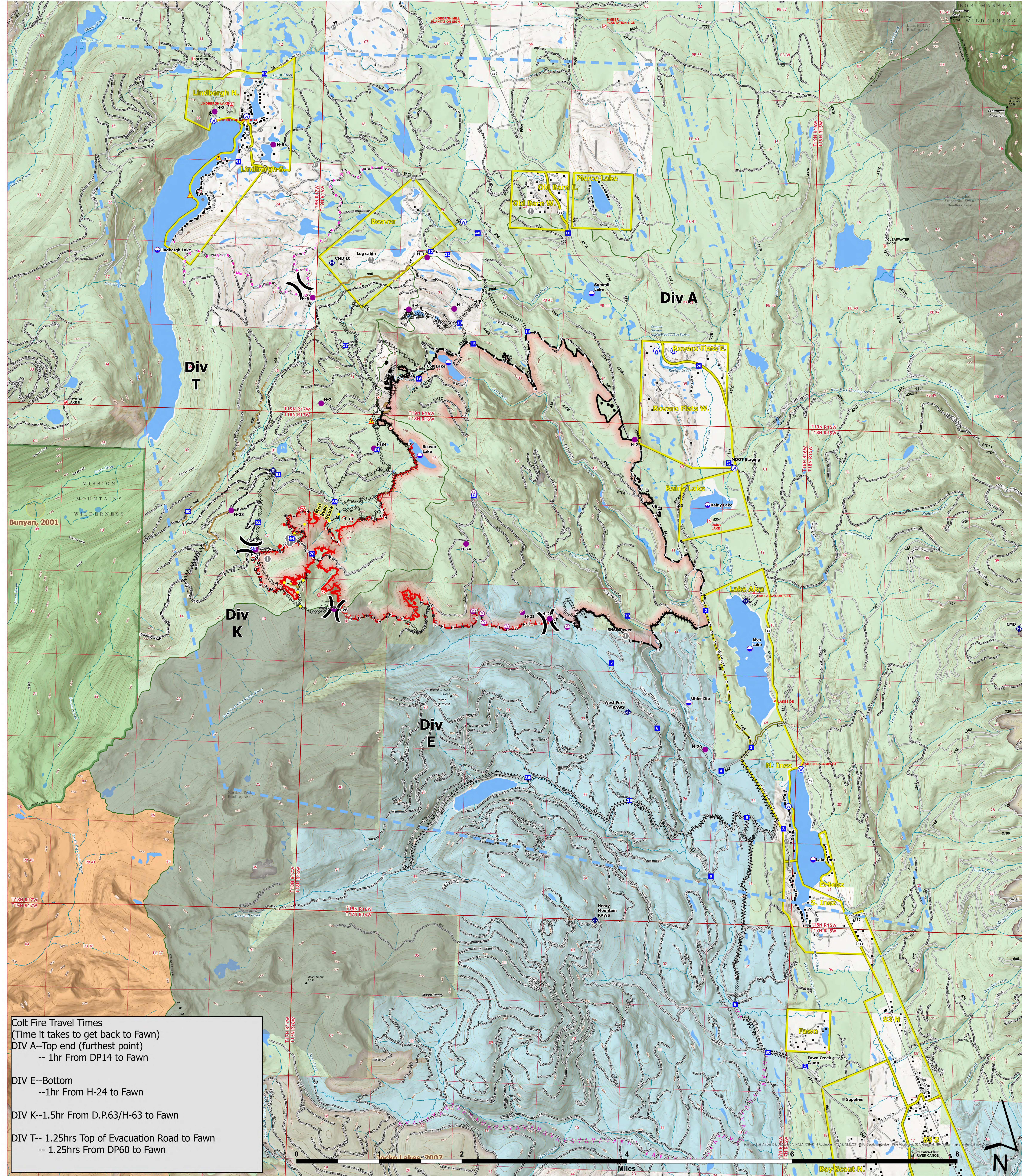


Travel Times



Colt Fire Travel Times
 (Time it takes to get back to Fawn)
 DIV A--Top end (furthest point)
 -- 1hr From DP14 to Fawn

DIV E--Bottom
 --1hr From H-24 to Fawn

DIV K--1.5hr From D.P.63/H-63 to Fawn

DIV T-- 1.25hrs Top of Evacuation Road to Fawn
 -- 1.25hrs From DP60 to Fawn

Colt Fire
 MT-SWS-200549
8/17/2023
 7,202 Acres
 Fire perimeter updated
 from IR on 8/8/2023 @ 2205hrs

- | | | | |
|---|---|--|--|
| <ul style="list-style-type: none"> ● Label Point ● Dip Site ● Helispot ● Sling Site ○ Unimproved Landing Area) Division Break ■ Drop Point ■ Camp ■ Staging Area ○ Lookout ○ Hot Spot - Spot Fire ○ Value at Risk ● Other | <ul style="list-style-type: none"> ⊕ Gate ⊕ Mobile Weather Unit ⊕ Internet Access ⊕ Repeater ⚠ Hazard ⊕ Water Source ⊕ Completed Dozer Line ⊕ Completed Fuel Break ⊕ Completed Hand Line ⊕ Completed Mixed Construction Line ⊕ Completed Road as Line ⊕ Planned Fuel Break ⊕ Planned Hand Line | <ul style="list-style-type: none"> ⊕ Planned Mixed Construction Line ⊕ Planned Road as Line ⊕ Access or Improved Road ⊕ Highlighted Feature ⊕ Other ⊕ Repair Line ⊕ Road Repair ⊕ Temporary Flight Restriction ⊕ Contained ⊕ Uncontained ⊕ Wildfire Daily Fire Perimeter ⊕ Evacuation Areas ⊕ Structures ⊕ Campground ⊕ Trailhead ⊕ Boating Site ⊕ Interpretive Site ⊕ Administrative FS Boundary ⊕ Ranger District Boundary ⊕ FS Wilderness Boundary ⊕ Forest Service Roads Closed ⊕ Local Connector ⊕ Local Road ⊕ Trail ⊕ Perennial Stream | <ul style="list-style-type: none"> ⊕ Intermittent Stream ⊕ Perennial NHDWaterbody ⊕ Bureau of Indian Affairs (BIA) ⊕ Bureau of Land Management (BLM) ⊕ State ⊕ US Forest Service (USFS) ⊕ Private ⊕ Undetermined ⊕ USFS Roadless Areas ⊕ USFS Wilderness |
|---|---|--|--|



Northern Rockies IMT-5
 8/16/2023 2221
 North American 1983 Datum, LatLong Grid