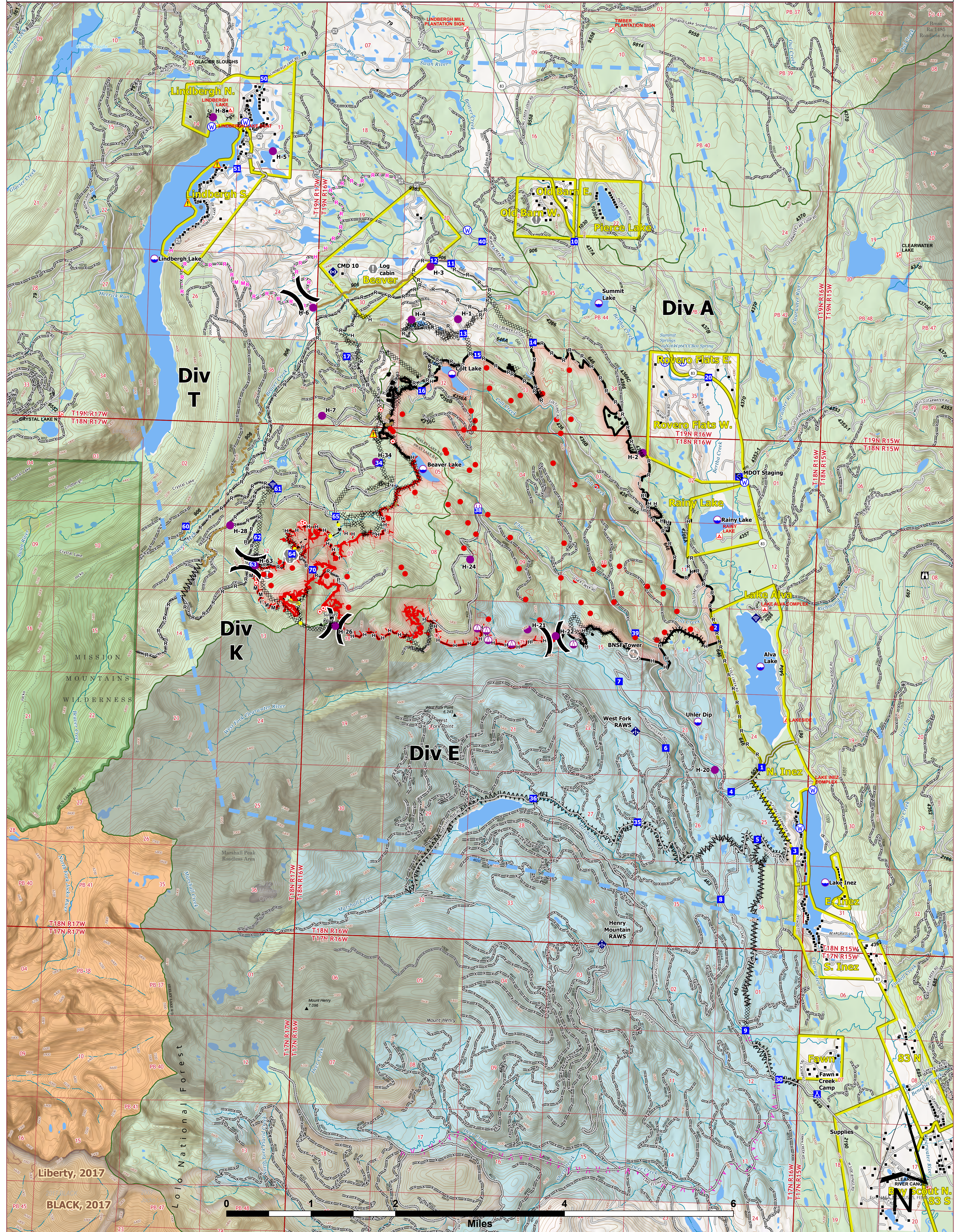


OPERATIONS



Colt Fire
 MT-SWS-200549
8/18/2023
 7,154 Acres

Fire perimeter updated from GPS on 8/17/2023 @ 2130hrs

- | | | | | |
|---|--|---|--|--|
| <ul style="list-style-type: none"> ● Label Point ○ Dip Site ● Helispot ○ Sling Site ○ Unimproved Landing Area ⌘ Division Break ■ Drop Point ■ Camp ■ Staging Area ■ Lookout ○ Hot Spot - Spot Fire ● Value at Risk ● Other ○ Gate | <ul style="list-style-type: none"> ◆ Mobile Weather Unit ◆ Internet Access ◆ Repeater ▲ Hazard ▲ Water Source ⊗ Completed Dozer Line ⊗ Completed Fuel Break ⊗ Completed Hand Line ⊗ Completed Mixed Construction Line ⊗ Completed Road as Line ⊗ Planned Fuel Break ⊗ Planned Hand Line ⊗ Planned Mixed Construction Line ⊗ Planned Road as Line | <ul style="list-style-type: none"> — Access or Improved Road — Highlighted Feature — Other — Repair Line — Road Repair — Temporary Flight Restriction — Contained — Uncontained — Wildfire Daily Fire Perimeter — Evacuation Areas — Structures — Campground — Trailhead — Boating Site | <ul style="list-style-type: none"> — Interpretive Site — Administrative FS Boundary — Ranger District Boundary — Other — FS Wilderness Boundary — Forest Service Roads Closed — Local Connector — Local Road — Trail — Perennial Stream — Intermittent Stream — Perennial NHDWaterbody — Perennial NHD Area — Historic Fire 2016-2018 — Historic Fire 2010-2015 | <ul style="list-style-type: none"> — Historic Fire 2000-2009 — Bureau of Indian Affairs (BIA) — Bureau of Land Management (BLM) — State — US Forest Service (USFS) — Private — Undetermined — USFS Roadless Areas — USFS Wilderness ■ 20230816_2302_Colt_Scattered Fuel ● 20230816_2302_Colt_Isolated Heat Source |
|---|--|---|--|--|



North American 1983 Datum, Lat/Long Grid