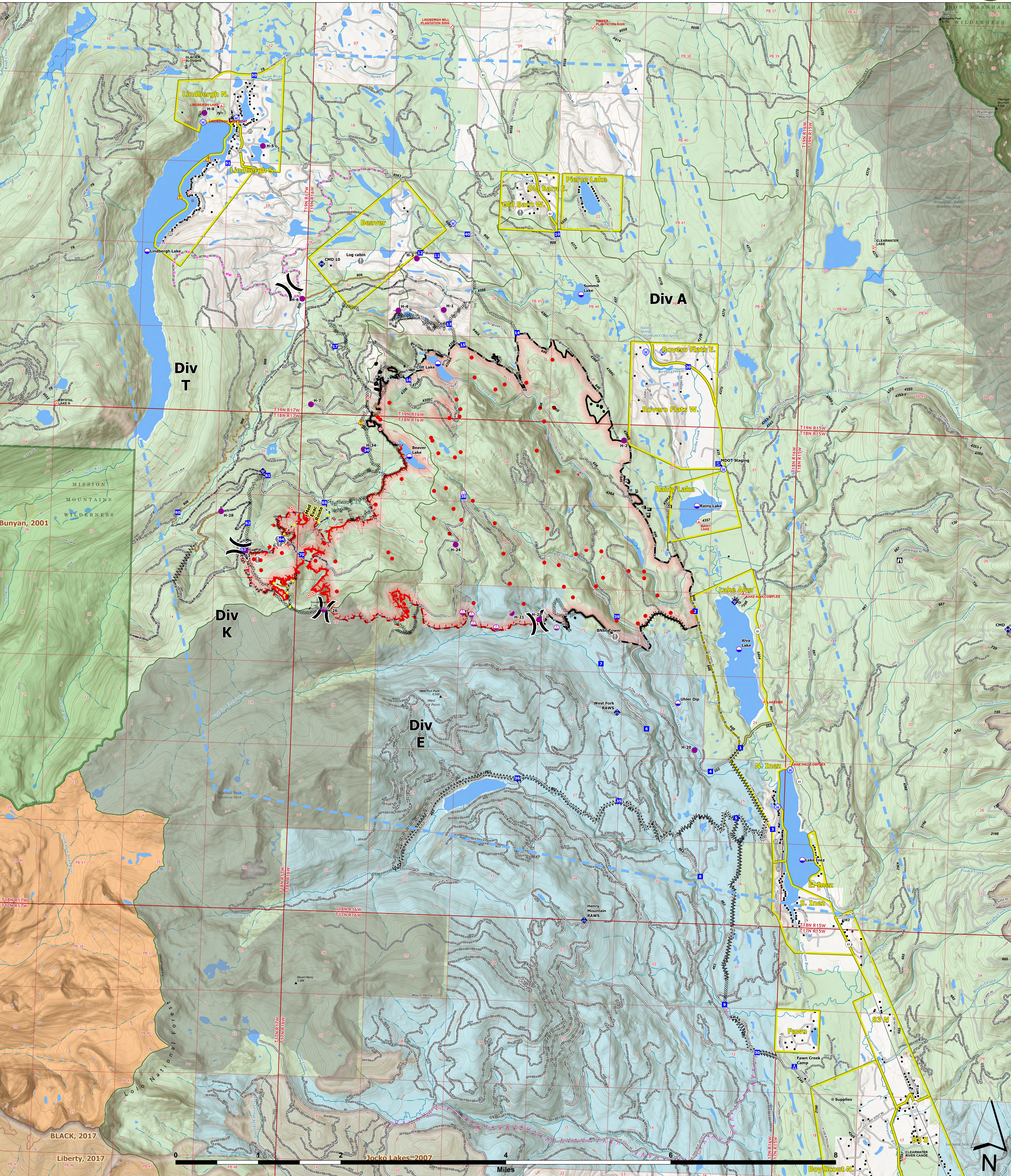




# OPERATIONS



**Colt Fire**  
 MT-SWS-200549  
**8/18/2023**  
 7,154 Acres  
 Fire perimeter updated  
 from GPS on 8/17/2023 @ 2130hrs

- |   |   |  |  |
|---|---|--|--|
| <ul style="list-style-type: none"> <li>● Label Point</li> <li>● Dip Site</li> <li>● Helispot</li> <li>● Sling Site</li> <li>○ Unimproved Landing Area</li> <li>) Division Break</li> <li>■ Drop Point</li> <li>■ Camp</li> <li>■ Staging Area</li> <li>○ Lookout</li> <li>● Hot Spot - Spot Fire</li> <li>● Value at Risk</li> <li>● Other</li> </ul> | <ul style="list-style-type: none"> <li>⬮ Gate</li> <li>⬮ Mobile Weather Unit</li> <li>⬮ Internet Access</li> <li>⬮ Repeater</li> <li>⚠ Hazard</li> <li>⊕ Water Source</li> <li>⊗ Completed Dozer Line</li> <li>⊗ Completed Fuel Break</li> <li>⊗ Completed Hand Line</li> <li>⊗ Completed Mixed Construction Line</li> <li>⊗ Completed Road as Line</li> <li>⊗ Planned Fuel Break</li> <li>⊗ Planned Hand Line</li> </ul> | <ul style="list-style-type: none"> <li>⊗ Planned Mixed Construction Line</li> <li>⊗ Planned Road as Line</li> <li>⊗ Access or Improved Road</li> <li>⊗ Highlighted Feature</li> <li>⊗ Other</li> <li>⊗ Repair Line</li> <li>⊗ Road Repair</li> <li>⊗ Temporary Flight Restriction</li> <li>⊗ Contained</li> <li>⊗ Uncontained</li> <li>⊗ Wildfire Daily Fire Perimeter</li> <li>⊗ Evacuation Areas</li> <li>⊗ Structures</li> <li>⊗ Campground</li> <li>⊗ Trailhead</li> <li>⊗ Boating Site</li> <li>⊗ Interpretive Site</li> <li>⊗ Administrative FS Boundary</li> <li>⊗ Ranger District Boundary</li> <li>⊗ FS Wilderness Boundary</li> <li>⊗ Forest Service Roads Closed</li> <li>⊗ Local Connector</li> <li>⊗ Local Road</li> <li>⊗ Trail</li> <li>⊗ Perennial Stream</li> </ul> | <ul style="list-style-type: none"> <li>⊗ Intermittent Stream</li> <li>⊗ Perennial NHDWaterbody</li> <li>⊗ Bureau of Indian Affairs (BIA)</li> <li>⊗ Bureau of Land Management (BLM)</li> <li>⊗ State</li> <li>⊗ US Forest Service (USFS)</li> <li>⊗ Private</li> <li>⊗ Undetermined</li> <li>⊗ USFS Roadless Areas</li> <li>⊗ USFS Wilderness</li> </ul> |
|---|---|--|--|



Northern Rockies IMT-5  
 8/17/2023 2133  
 North American 1983 Datum, LatLong Grid