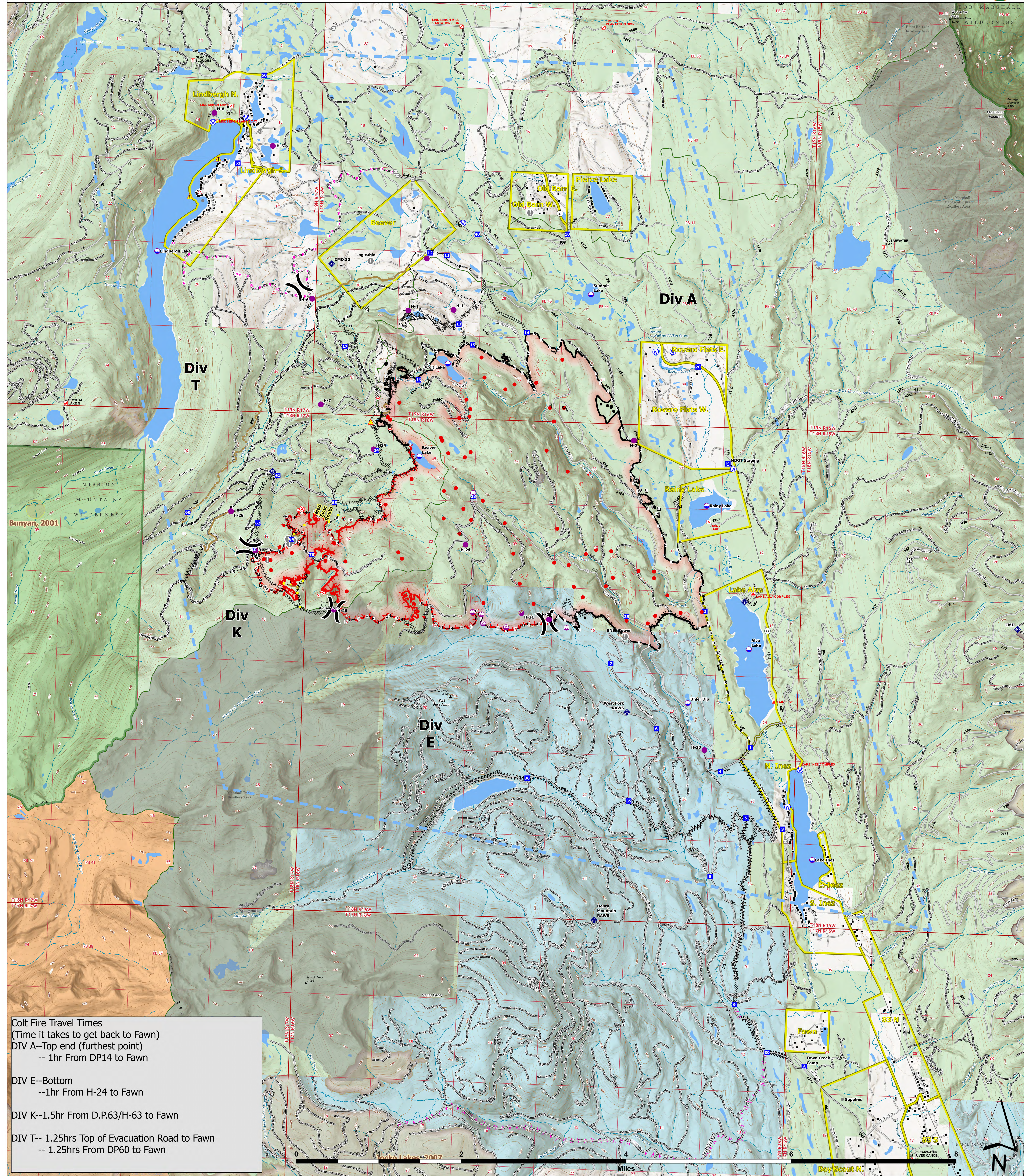


Travel Times



Colt Fire Travel Times
 (Time it takes to get back to Fawn)
 DIV A--Top end (furthest point)
 -- 1hr From DP14 to Fawn
 DIV E--Bottom
 --1hr From H-24 to Fawn
 DIV K--1.5hr From D.P.63/H-63 to Fawn
 DIV T-- 1.25hrs Top of Evacuation Road to Fawn
 -- 1.25hrs From DP60 to Fawn



Colt Fire
 MT-SWS-200549
8/18/2023
 7,154 Acres
 Fire perimeter updated
 from GPS on 8/17/2023 @ 2130hrs

- | | | | |
|---|---|---|---|
| <ul style="list-style-type: none"> ● Label Point ● Dip Site ● Helispot ● Sling Site ○ Unimproved Landing Area ⌋ Division Break ■ Drop Point ■ Camp ■ Staging Area ○ Lookout ● Hot Spot - Spot Fire ● Value at Risk ● Other | <ul style="list-style-type: none"> ⊗ Gate ⊗ Mobile Weather Unit ⊗ Internet Access ⊗ Repeater ⚠ Hazard ⊗ Water Source ⊗ Completed Dozer Line ⊗ Completed Fuel Break ⊗ Completed Hand Line ⊗ Completed Mixed Construction Line ⊗ Completed Road as Line ⊗ Planned Fuel Break ⊗ Planned Hand Line | <ul style="list-style-type: none"> ⊗ Planned Mixed Construction Line ⊗ Planned Road as Line ⊗ Access or Improved Road ⊗ Highlighted Feature ⊗ Other ⊗ Repair Line ⊗ Road Repair ⊗ Temporary Flight Restriction ⊗ Contained ⊗ Uncontained ⊗ Wildfire Daily Fire Perimeter ⊗ Evacuation Areas | <ul style="list-style-type: none"> ● Structures ● Campground ● Trailhead ● Boating Site ● Interpretive Site □ Administrative FS Boundary □ Ranger District Boundary □ FS Wilderness Boundary □ Forest Service Roads Closed □ Local Connector □ Local Road □ Trail □ Perennial Stream |
|---|---|---|---|



USFS Wilderness
 Northern Rockies MTS
 8/17/2023 19:23:02 Colt_Sca
 North America 120230816_2302_Colt_Sca