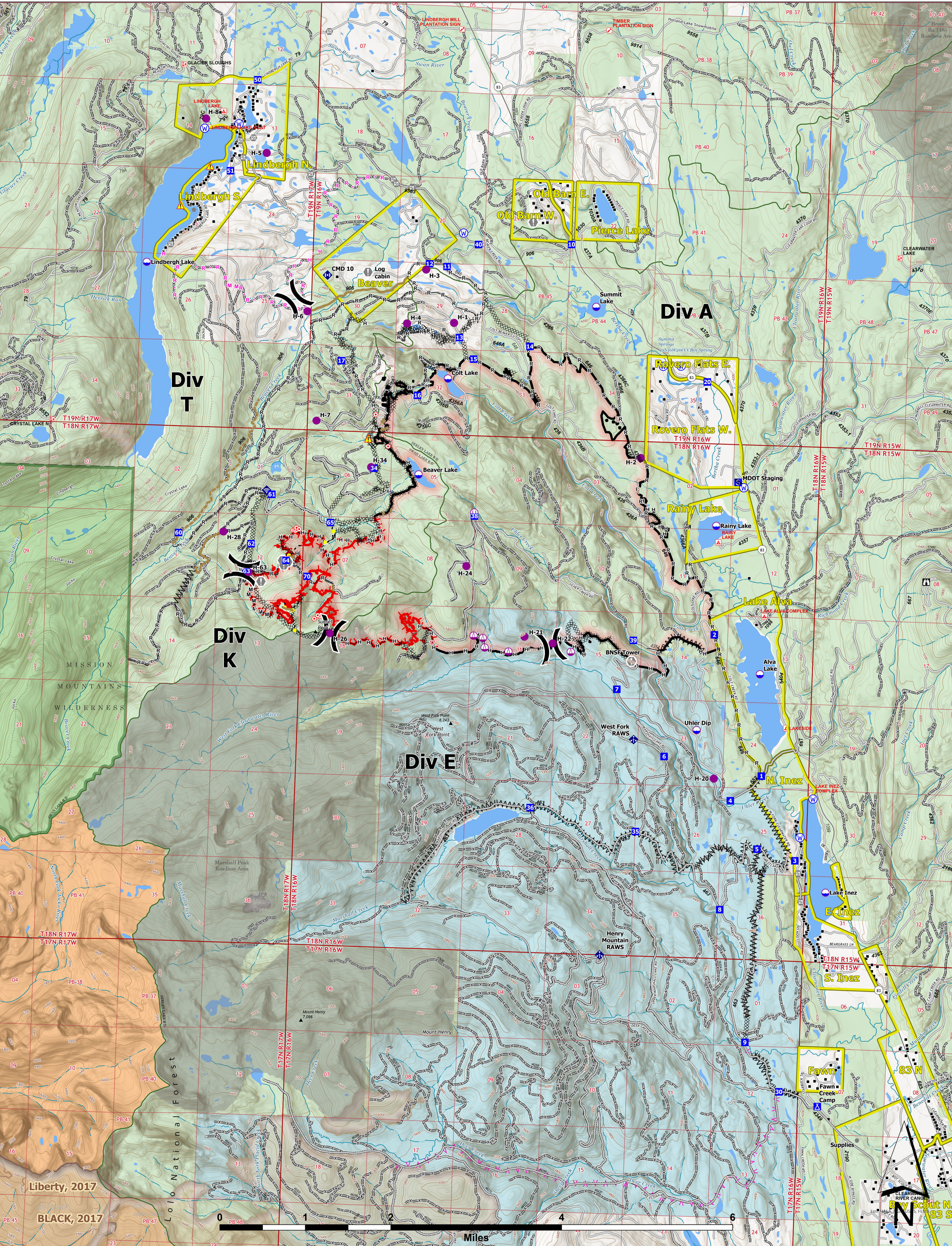




OPERATIONS



Colt Fire
 MT-SWS-200549
 8/23/2023
 7,154 Acres

Fire perimeter updated from GPS on 8/17/2023 @ 2130hrs

- | | | | | |
|---------------------------|-------------------------------------|-----------------------------------|-------------------------------|-----------------------------------|
| ● Label Point | ⚡ Gate | ⚡ Planned Mixed Construction Line | ⚡ Trailhead | ■ Perennial NHD Area |
| ⚡ Dip Site | ⚡ Mobile Weather Unit | ⚡ Planned Road as Line | ⚡ Boating Site | ■ Historic Fire 2016-2018 |
| ⚡ Helispot | ⚡ Internet Access | ⚡ Access or Improved Road | ⚡ Interpretive Site | ■ Historic Fire 2010-2015 |
| ⚡ Sling Site | ⚡ Repeater | ⚡ Highlighted Feature | ⚡ Administrative FS Boundary | ■ Historic Fire 2000-2009 |
| ⚡ Unimproved Landing Area | ⚡ Hazard | ⚡ Other | ⚡ Ranger District Boundary | ■ Bureau of Indian Affairs (BIA) |
| ⚡ Division Break | ⚡ Water Source | ⚡ Repair Line | ⚡ FS Wilderness Boundary | ■ Bureau of Land Management (BLM) |
| ⚡ Drop Point | ⚡ Completed Dozer Line | ⚡ Road Repair | ⚡ Forest Service Roads Closed | ■ State |
| ⚡ Camp | ⚡ Completed Fuel Break | ⚡ Contained | ⚡ Local Connector | ■ US Forest Service (USFS) |
| ⚡ Staging Area | ⚡ Completed Hand Line | ⚡ Uncontained | ⚡ Local Road | ■ Private |
| ⚡ Lookout | ⚡ Completed Mixed Construction Line | ⚡ Wildfire Daily Fire Perimeter | ⚡ Trail | ■ Undetermined |
| ⚡ Hot Spot - Spot Fire | ⚡ Completed Road as Line | ⚡ Evacuation Areas | ⚡ Perennial Stream | ■ USFS Roadless Areas |
| ⚡ Value at Risk | ⚡ Planned Fuel Break | ⚡ Structures | ⚡ Intermittent Stream | ■ USFS Wilderness |
| ⚡ Other | ⚡ Planned Hand Line | ⚡ Campground | ⚡ Perennial NHD Waterbody | |



Wyoming Type 3 Team
 8/22/2023 1916
 North American 1983 Datum, Lat/Long Grid