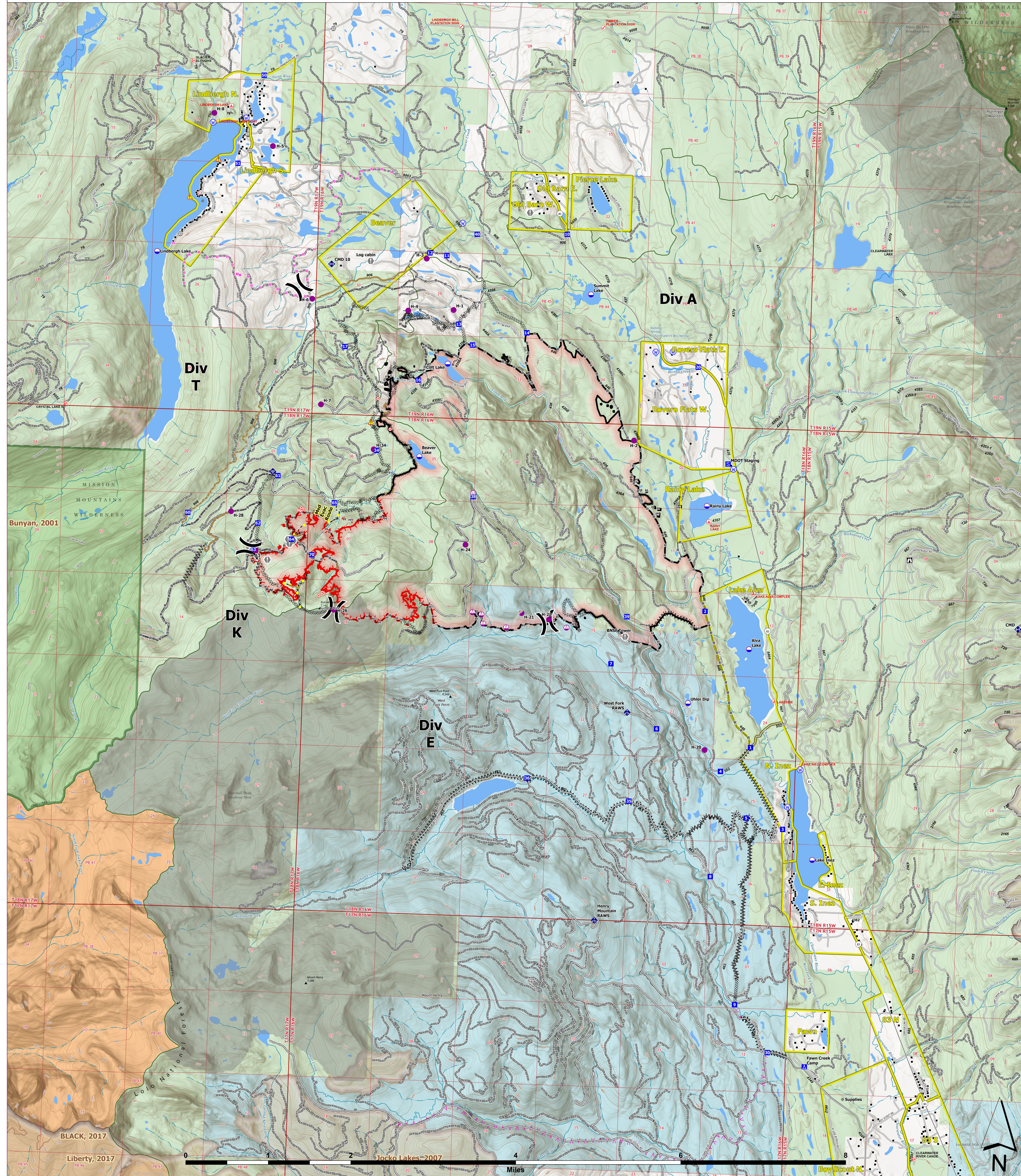




OPERATIONS



Colt Fire
 MT-SWS-200549
8/23/2023
 7,154 Acres
 Fire perimeter updated
 from GPS on 8/17/2023 @ 2130hrs

- | | | | | |
|---------------------------|--------------------------|-------------------------------------|-------------------------------|-----------------------------------|
| ● Label Point | ● Other | ▲ Planned Fuel Break | ■ Evacuation Areas | ⋯ Trail |
| ● Dip Site | ⊙ Gate | ⋯ Planned Hand Line | ■ Structures | ⋯ Perennial Stream |
| ● Helispot | ⊙ Mobile Weather Unit | ⋯ Planned Mixed Construction Line | ■ Campground | ⋯ Intermittent Stream |
| ● Sling Site | ⊙ Internet Access | ⋯ Planned Road as Line | ■ Boating Site | ■ Perennial NHD Waterbody |
| ● Unimproved Landing Area | ⊙ Repeater | ⋯ Access or Improved Road | ■ Interpretive Site | ■ Bureau of Indian Affairs (BIA) |
| ⋯ Division Break | ⚠ Hazard | ⋯ Highlighted Feature | ■ Administrative FS Boundary | ■ Bureau of Land Management (BLM) |
| ● Drop Point | ⚡ Water Source | ⋯ Other | ■ Ranger District Boundary | ■ State |
| ■ Camp | ⊘ Completed Dozer Line | ⋯ Repair Line | ■ FS Wilderness Boundary | ■ US Forest Service (USFS) |
| ■ Staging Area | ⊘ Completed Fuel Break | ⋯ Road Repair | ⋯ Forest Service Roads Closed | ■ Private |
| ■ Lookout | ⋯ Completed Hand Line | ⋯ Completed Mixed Construction Line | ⋯ Local Connector | ■ Undetermined |
| ● Hot Spot - Spot Fire | ⋯ Completed Road as Line | ⋯ Wildfire Daily Fire Perimeter | ⋯ Local Road | ■ USFS Roadless Areas |
| ● Value at Risk | | | | ■ USFS Wilderness |



Wyoming Type 3 Team
 8/22/2023 1910
 North American 1983 Datum, Lat/Long Grid