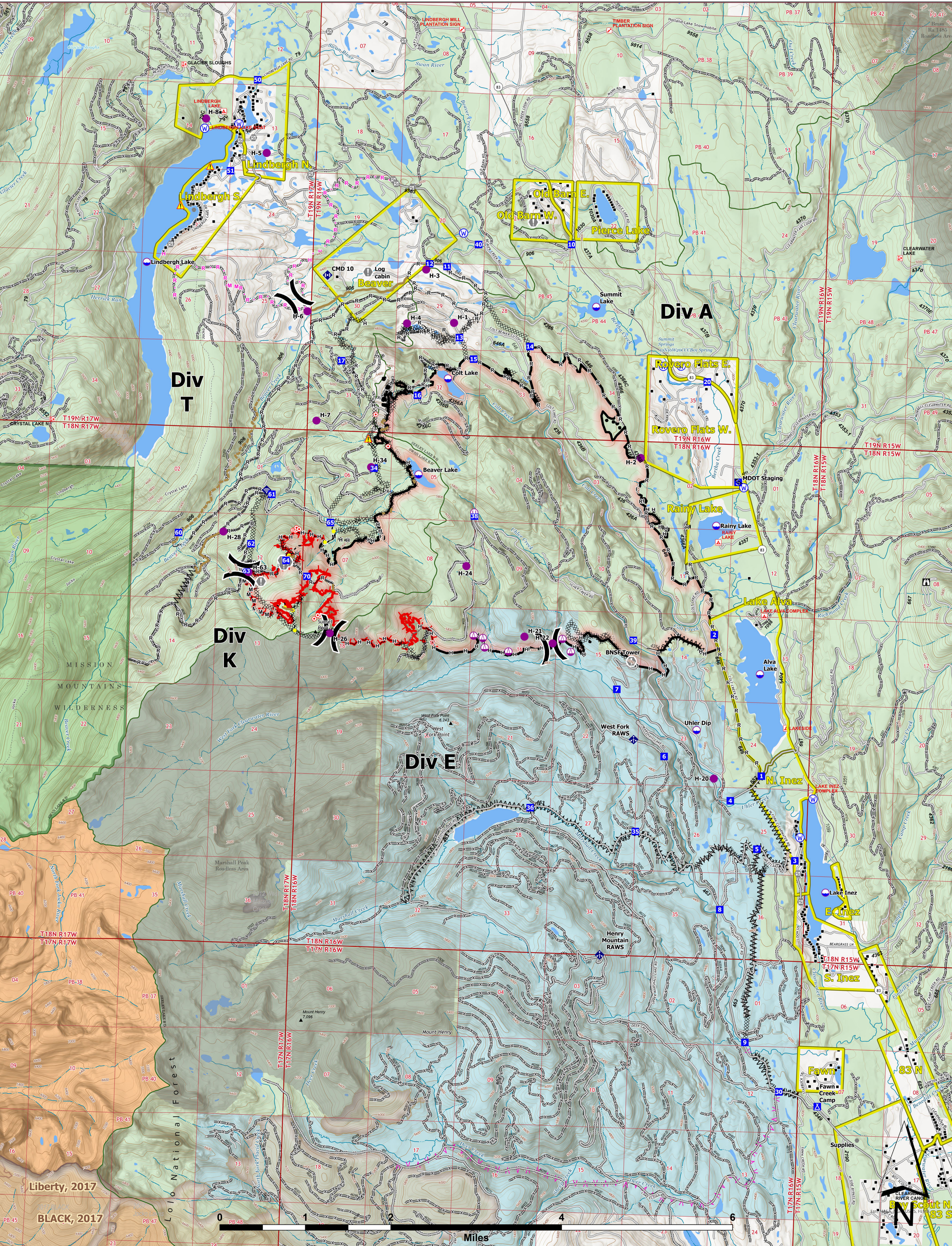




OPERATIONS



Colt Fire
 MT-SWS-200549
8/24/2023
 7,154 Acres

Fire perimeter updated from GPS on 8/17/2023 @ 2130hrs

- | | | | | |
|---------------------------|---------------------------------------|-------------------------------------|-------------------------------|-----------------------------------|
| ● Label Point | ⬇ Gate | M - Planned Mixed Construction Line | ⚓ Trailhead | ■ Perennial NHD Area |
| ● Dip Site | ⬇ Mobile Weather Unit | R - Planned Road as Line | ⚓ Boating Site | ■ Historic Fire 2016-2018 |
| ● Helispot | ⬇ Internet Access | — Access or Improved Road | ⚓ Interpretive Site | ■ Historic Fire 2010-2015 |
| ● Sling Site | ⬇ Repeater | — Highlighted Feature | ⚓ Administrative FS Boundary | ■ Historic Fire 2000-2009 |
| ⊙ Unimproved Landing Area | ⚠ Hazard | — Other | ⚓ Ranger District Boundary | ■ Bureau of Indian Affairs (BIA) |
| X Division Break | 💧 Water Source | — Repair Line | ⚓ FS Wilderness Boundary | ■ Bureau of Land Management (BLM) |
| ■ Drop Point | ⌘ Completed Dozer Line | — Road Repair | ⚓ Forest Service Roads Closed | ■ State |
| ⊠ Camp | ⌘ Completed Fuel Break | — Contained | — Local Connector | ■ US Forest Service (USFS) |
| ⊠ Staging Area | ⌘ Completed Hand Line | — Uncontained | — Local Road | ■ Private |
| ⊠ Lookout | M - Completed Mixed Construction Line | — Wildfire Daily Fire Perimeter | — Trail | ■ Undetermined |
| ● Hot Spot - Spot Fire | R - Completed Road as Line | — Evacuation Areas | — Perennial Stream | ■ USFS Roadless Areas |
| ● Value at Risk | ⬆ Planned Fuel Break | ■ Structures | — Intermittent Stream | ■ USFS Wilderness |
| ● Other | H - Planned Hand Line | ■ Campground | — Perennial NHD Waterbody | |



Wyoming Type 3 Team
 8/23/2023 2039
 North American 1983 Datum, Lat/Long Grid