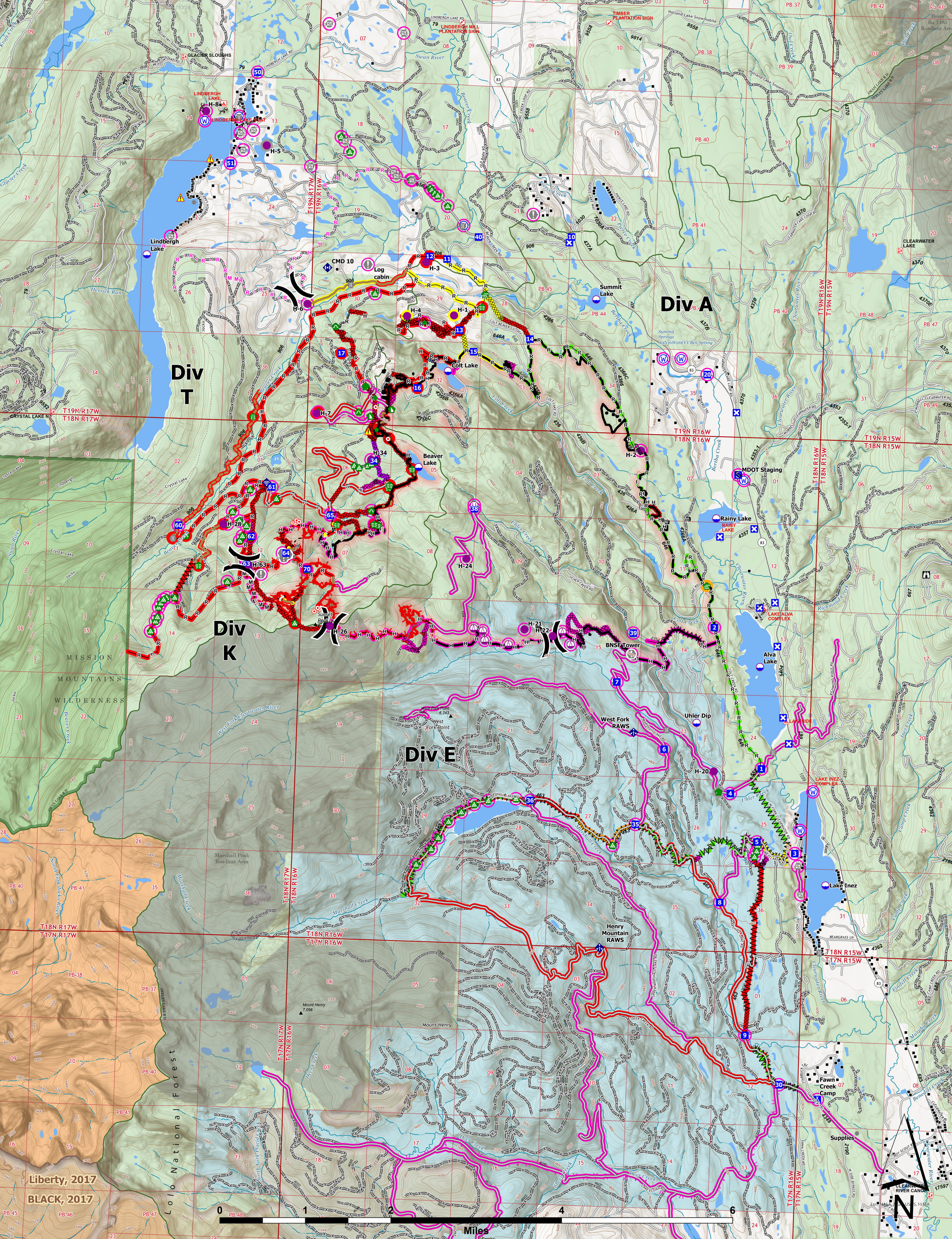




Suppression Repair



Colt Fire
 MT-SWS-200549
8/25/2023
 7,154 Acres

Fire perimeter updated from GPS on 8/17/2023 @ 2130hrs

- | | | | | | | |
|---|--|--|--|---|---|---|
| <ul style="list-style-type: none"> ● Label Point ● Dip Site ● Helispot ● Sling Site ● Unimproved Landing Area ⌋ Division Break ⌋ Drop Point ⌋ Closure ⌋ Camp ⌋ Staging Area ⌋ Lookout ⌋ Hot Spot - Spot Fire ⌋ Value at Risk | <ul style="list-style-type: none"> ● Other ● Gate ● Bridge ● Water Development or Draft Site ● Stream Crossing ● Road Repair ● Repair Point ● Landing or Log Deck ● Dozer Push ● Culvert ● Mobile Weather Unit ● Internet Access ● Repeater | <ul style="list-style-type: none"> ▲ Hazard ● Water Source ⌋ Completed Dozer Line ⌋ Completed Fuel Break ⌋ Completed Hand Line ⌋ Completed Mixed Construction Line ⌋ Completed Road as Line ⌋ Planned Fuel Break ⌋ Planned Hand Line ⌋ Planned Mixed Construction Line ⌋ Planned Road as Line | <ul style="list-style-type: none"> — Access or Improved Road — Highlighted Feature — Other — Repair Line — Road Repair — Contained — Uncontained — Wildfire Daily Fire Perimeter — Administrative FS Boundary — Ranger District Boundary | <ul style="list-style-type: none"> ■ FS Wilderness Boundary ■ Forest Service Roads Closed | <ul style="list-style-type: none"> ● Completed - Ready for Inspection ● Other - See Comments ● Event Line ● Repair Status ● In Use - Fire Management ● Repair Needed ● In Progress | <ul style="list-style-type: none"> ● Needs Assessment ● Repair Needed ● In Progress ● Completed - Ready for Inspection ● Completed - Inspected |
|---|--|--|--|---|---|---|

