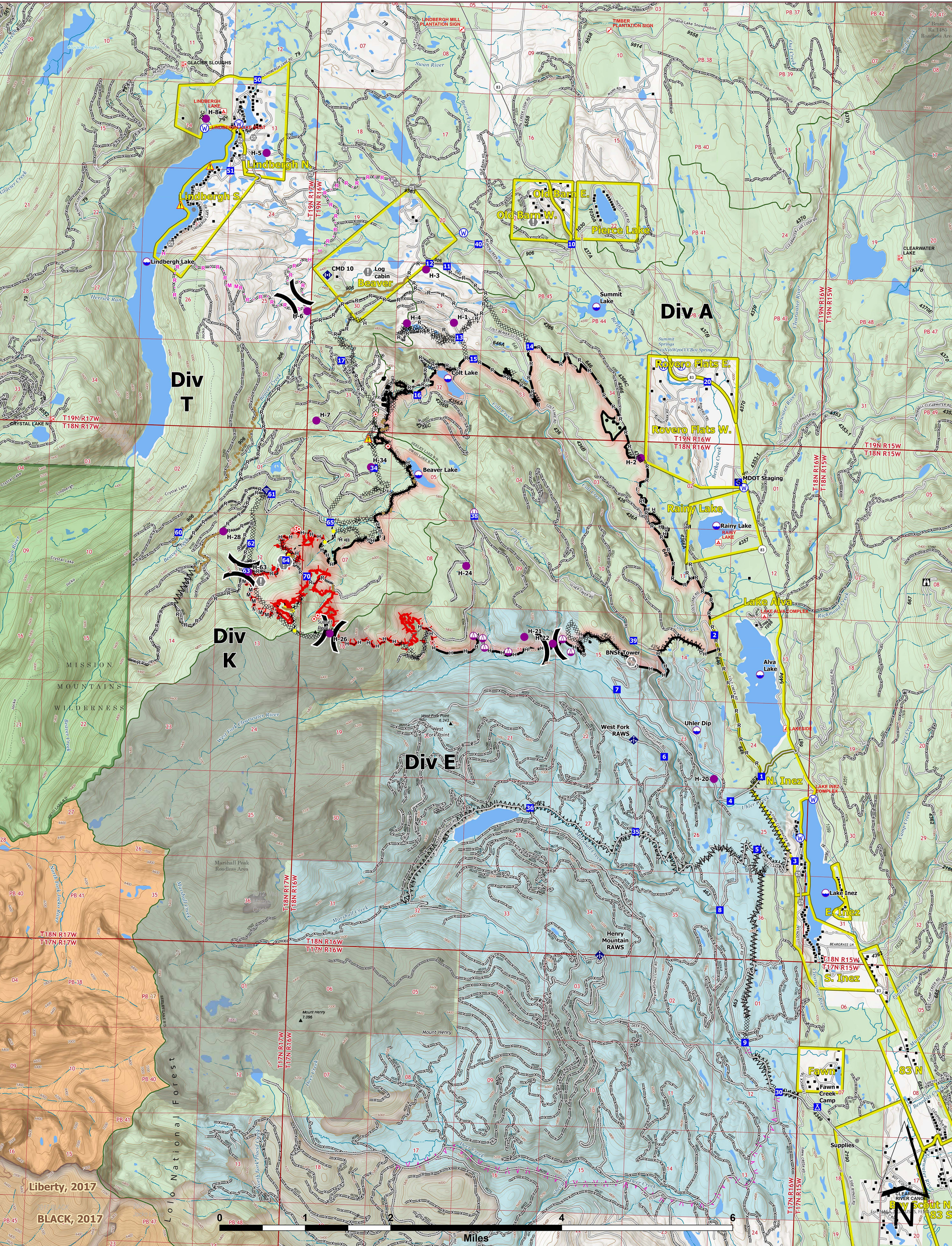




OPERATIONS



Colt Fire
 MT-SWS-200549
8/26/2023
7,154 Acres
 Fire perimeter updated from GPS on 8/17/2023 @ 2130hrs

- | | | | | |
|---------------------------|-------------------------------------|-----------------------------------|-------------------------------|-----------------------------------|
| ● Label Point | ⬇ Gate | ⬆ Planned Mixed Construction Line | ⬆ Trailhead | ■ Perennial NHD Area |
| ● Dip Site | ⬇ Mobile Weather Unit | ⬆ Planned Road as Line | ⬆ Boating Site | ■ Historic Fire 2016-2018 |
| ● Helispot | ⬇ Internet Access | ⬆ Access or Improved Road | ⬆ Interpretive Site | ■ Historic Fire 2010-2015 |
| ● Sling Site | ⬇ Repeater | ⬆ Highlighted Feature | ⬆ Administrative FS Boundary | ■ Historic Fire 2000-2009 |
| ⊙ Unimproved Landing Area | ⬇ Hazard | ⬆ Other | ⬆ Ranger District Boundary | ■ Bureau of Indian Affairs (BIA) |
| ⊗ Division Break | ⬇ Water Source | ⬆ Repair Line | ⬆ FS Wilderness Boundary | ■ Bureau of Land Management (BLM) |
| ⬆ Drop Point | ⬇ Completed Dozer Line | ⬆ Road Repair | ⬆ Forest Service Roads Closed | ■ State |
| ⬆ Camp | ⬇ Completed Fuel Break | ⬆ Contained | ⬆ Local Connector | ■ US Forest Service (USFS) |
| ⬆ Staging Area | ⬇ Completed Hand Line | ⬆ Uncontained | ⬆ Local Road | ■ Private |
| ⬆ Lookout | ⬇ Completed Mixed Construction Line | ⬆ Wildfire Daily Fire Perimeter | ⬆ Trail | ■ Undetermined |
| ⬆ Hot Spot - Spot Fire | ⬆ Completed Road as Line | ⬆ Evacuation Areas | ⬆ Perennial Stream | ■ USFS Roadless Areas |
| ⬆ Value at Risk | ⬆ Planned Fuel Break | ⬆ Structures | ⬆ Intermittent Stream | ■ USFS Wilderness |
| ⬆ Other | ⬆ Planned Hand Line | ⬆ Campground | ⬆ Perennial NHD Waterbody | |



Wyoming Type 3 Team
 8/23/2023 2039
 North American 1983 Datum, LatLong Grid