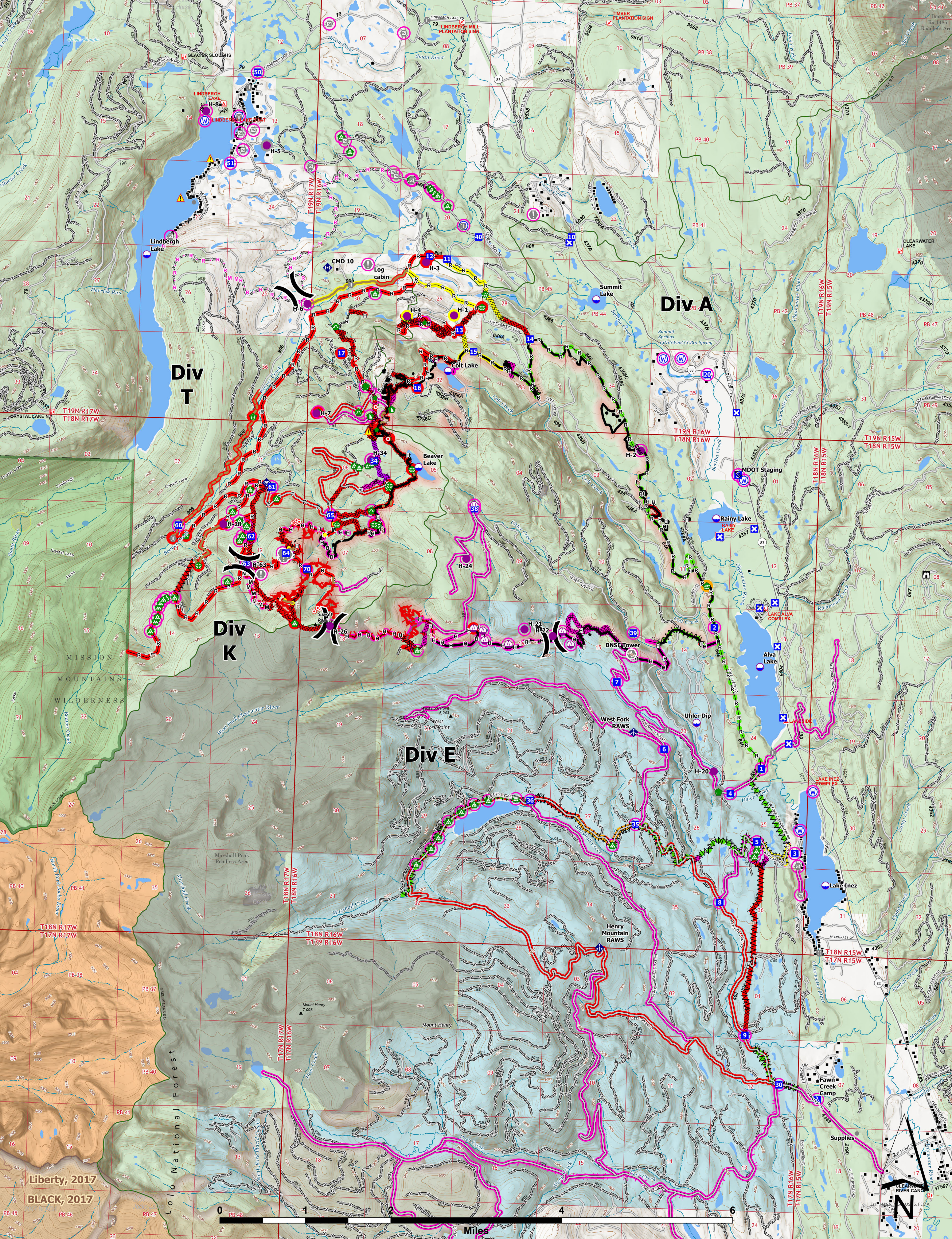




Suppression Repair



Colt Fire
 MT-SWS-200549
8/26/2023
 7,154 Acres

Fire perimeter updated from GPS on 8/17/2023 @ 2130hrs

- | | | | | | | |
|---|--|--|--|---|---|---|
| <ul style="list-style-type: none"> ● Label Point ○ Dip Site ● Helispot ○ Sling Site ○ Unimproved Landing Area ⌋ Division Break ⌋ Drop Point ⌋ Closure ⌋ Camp ⌋ Staging Area ⌋ Lookout ⌋ Hot Spot - Spot Fire ⌋ Value at Risk | <ul style="list-style-type: none"> ● Other ○ Gate ○ Bridge ○ Water Development or Draft Site ○ Stream Crossing ○ Road Repair ○ Repair Point ○ Landing or Log Deck ○ Dozer Push ○ Culvert ○ Mobile Weather Unit ○ Internet Access ○ Repeater | <ul style="list-style-type: none"> ▲ Hazard ○ Water Source ⌋ Completed Dozer Line ⌋ Completed Fuel Break ⌋ Completed Hand Line ⌋ Completed Mixed Construction Line ⌋ Completed Road as Line ⌋ Planned Fuel Break ⌋ Planned Hand Line ⌋ Planned Mixed Construction Line ⌋ Planned Road as Line | <ul style="list-style-type: none"> — Access or Improved Road — Highlighted Feature — Other — Repair Line — Road Repair — Contained — Uncontained — Wildfire Daily Fire Perimeter — Administrative FS Boundary — Ranger District Boundary | <ul style="list-style-type: none"> — FS Wilderness Boundary — Forest Service Roads Closed | <ul style="list-style-type: none"> ● Completed - Ready for Inspection ● Other - See Comments ○ Event Line ○ Repair Status ● Repair Needed ● In Progress | <ul style="list-style-type: none"> ○ Needs Assessment ○ Repair Needed ○ In Progress ○ Completed - Ready for Inspection ○ Completed - Inspected |
|---|--|--|--|---|---|---|

