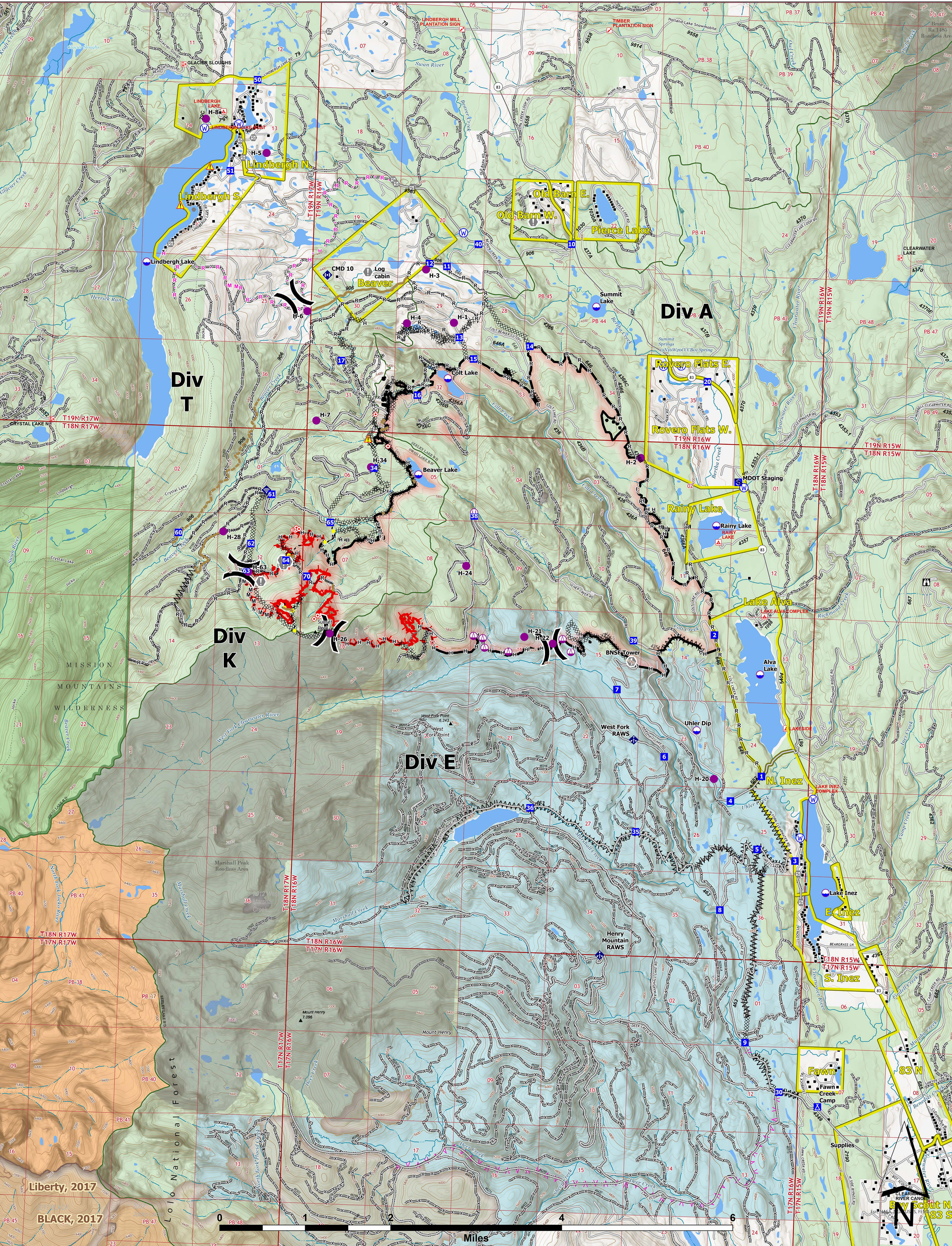




# OPERATIONS



**Colt Fire**  
 MT-SWS-200549  
**8/27/2023**  
**7,154 Acres**

Fire perimeter updated from GPS and IR on 8/26/2023 @ 2322hrs

- |                           |                                     |                                   |                               |                                   |
|---------------------------|-------------------------------------|-----------------------------------|-------------------------------|-----------------------------------|
| ● Label Point             | ⬇ Gate                              | ⬆ Planned Mixed Construction Line | ⬆ Trailhead                   | ■ Perennial NHD Area              |
| ● Dip Site                | ⬇ Mobile Weather Unit               | ⬆ Planned Road as Line            | ⬆ Boating Site                | ■ Historic Fire 2016-2018         |
| ● Helispot                | ⬇ Internet Access                   | ⬆ Access or Improved Road         | ⬆ Interpretive Site           | ■ Historic Fire 2010-2015         |
| ● Sling Site              | ⬇ Repeater                          | ⬆ Highlighted Feature             | ⬆ Administrative FS Boundary  | ■ Historic Fire 2000-2009         |
| ⊙ Unimproved Landing Area | ⬇ Hazard                            | ⬆ Other                           | ⬆ Ranger District Boundary    | ■ Bureau of Indian Affairs (BIA)  |
| ⊗ Division Break          | ⬇ Water Source                      | ⬆ Repair Line                     | ⬆ FS Wilderness Boundary      | ■ Bureau of Land Management (BLM) |
| ⬆ Drop Point              | ⬇ Completed Dozer Line              | ⬆ Road Repair                     | ⬆ Forest Service Roads Closed | ■ State                           |
| ⬆ Camp                    | ⬇ Completed Fuel Break              | ⬆ Contained                       | ⬆ Local Connector             | ■ US Forest Service (USFS)        |
| ⬆ Staging Area            | ⬇ Completed Hand Line               | ⬆ Uncontained                     | ⬆ Local Road                  | ■ Private                         |
| ⬆ Lookout                 | ⬇ Completed Mixed Construction Line | ⬆ Wildfire Daily Fire Perimeter   | ⬆ Trail                       | ■ Undetermined                    |
| ⬆ Hot Spot - Spot Fire    | ⬆ Completed Road as Line            | ⬆ Evacuation Areas                | ⬆ Perennial Stream            | ■ USFS Roadless Areas             |
| ⬆ Value at Risk           | ⬆ Planned Fuel Break                | ⬆ Structures                      | ⬆ Intermittent Stream         | ■ USFS Wilderness                 |
| ⬆ Other                   | ⬆ Planned Hand Line                 | ⬆ Campground                      | ⬆ Perennial NHD Waterbody     |                                   |



Wyoming Type 3 Team  
 8/23/2023 2039  
 North American 1983 Datum, LatLong Grid