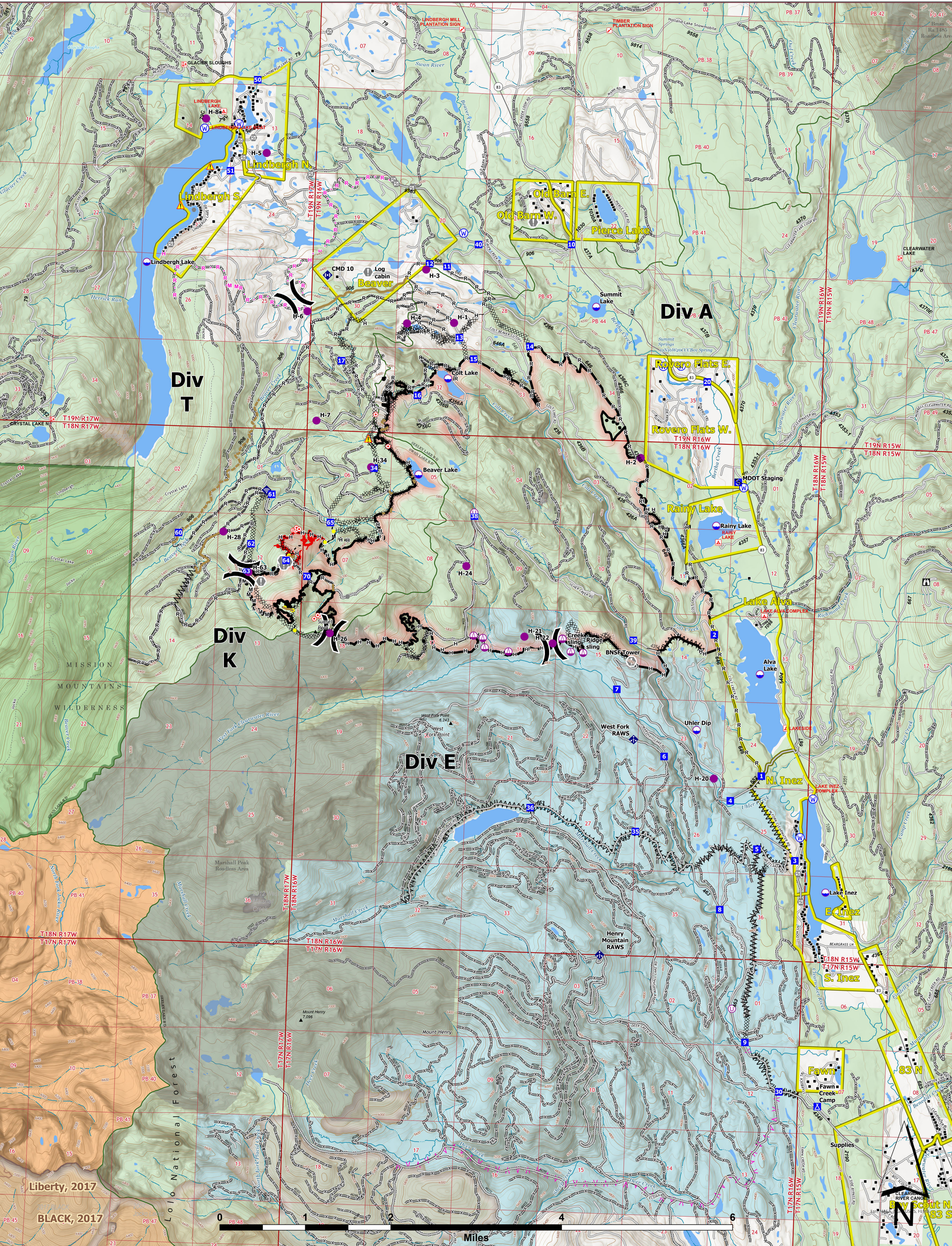




# OPERATIONS



**Colt Fire**  
 MT-SWS-200549  
**8/28/2023**  
 7,154 Acres

Fire perimeter updated from GPS and IR on 8/25/2023 @ 2322hrs

- |                           |                                       |                                     |                               |                                   |
|---------------------------|---------------------------------------|-------------------------------------|-------------------------------|-----------------------------------|
| ● Label Point             | ⬇ Gate                                | M - Planned Mixed Construction Line | ⚓ Trailhead                   | ■ Perennial NHD Area              |
| ● Dip Site                | ⬇ Mobile Weather Unit                 | R - Planned Road as Line            | ⚓ Boating Site                | ■ Historic Fire 2016-2018         |
| ● Helispot                | ⬇ Internet Access                     | — Access or Improved Road           | ⚓ Interpretive Site           | ■ Historic Fire 2010-2015         |
| ● Sling Site              | ⬇ Repeater                            | — Highlighted Feature               | ⚓ Administrative FS Boundary  | ■ Historic Fire 2000-2009         |
| ⊙ Unimproved Landing Area | ⚠ Hazard                              | — Other                             | ⚓ Ranger District Boundary    | ■ Bureau of Indian Affairs (BIA)  |
| X Division Break          | ⚡ Water Source                        | — Repair Line                       | ⚓ FS Wilderness Boundary      | ■ Bureau of Land Management (BLM) |
| ■ Drop Point              | ⌘ Completed Dozer Line                | — Road Repair                       | ⚓ Forest Service Roads Closed | ■ State                           |
| ■ Camp                    | ⌘ Completed Fuel Break                | — Contained                         | — Local Connector             | ■ US Forest Service (USFS)        |
| ■ Staging Area            | ⌘ Completed Hand Line                 | — Uncontained                       | — Local Road                  | ■ Private                         |
| ■ Lookout                 | M - Completed Mixed Construction Line | — Wildfire Daily Fire Perimeter     | — Trail                       | ■ Undetermined                    |
| ● Hot Spot - Spot Fire    | R - Completed Road as Line            | ■ Evacuation Areas                  | — Perennial Stream            | ■ USFS Roadless Areas             |
| ● Value at Risk           | — Planned Fuel Break                  | ■ Structures                        | — Intermittent Stream         | ■ USFS Wilderness                 |
| ● Other                   | H - Planned Hand Line                 | ■ Campground                        | ■ Perennial NHD Waterbody     |                                   |



Wyoming Type 3 Team  
 8/27/2023 2205  
 North American 1983 Datum, Lat/Long Grid