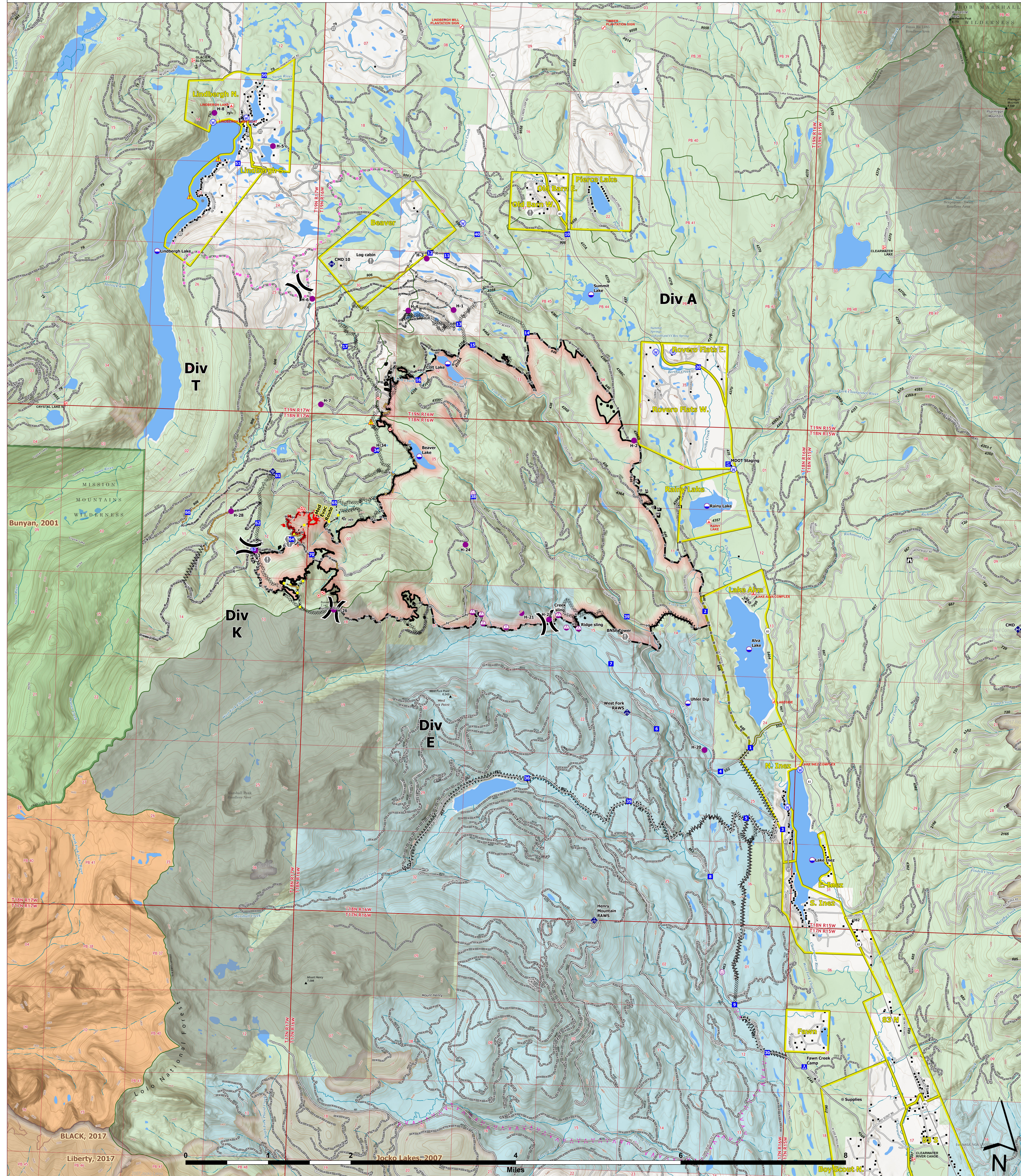




OPERATIONS



Colt Fire
 MT-SWS-200549
8/28/2023
 7,154 Acres
 Fire perimeter updated
 from GPS and IR on 8/25/2023 @ 2322hrs

- | | | | |
|---------------------------|--------------------------|-------------------------------------|-------------------------------|
| ● Label Point | ● Other | ▲ Planned Fuel Break | ■ Evacuation Areas |
| ● Dip Site | ● Gate | ● Planned Hand Line | ■ Structures |
| ● Helispot | ● Mobile Weather Unit | ● Planned Mixed Construction Line | ■ Campground |
| ● Sling Site | ● Internet Access | ● Planned Road as Line | ■ Trailhead |
| ● Unimproved Landing Area | ● Repeater | ● Access or Improved Road | ■ Boating Site |
| ● Division Break | ● Hazard | ● Highlighted Feature | ■ Interpretive Site |
| ● Drop Point | ● Water Source | ● Other | ■ Administrative FS Boundary |
| ● Camp | ● Completed Dozer Line | ● Repair Line | ■ Ranger District Boundary |
| ● Staging Area | ● Completed Fuel Break | ● Road Repair | ■ FS Wilderness Boundary |
| ● Lookout | ● Completed Hand Line | ● Completed Mixed Construction Line | ■ Forest Service Roads Closed |
| ● Hot Spot - Spot Fire | ● Completed Road as Line | ● Wildfire Daily Fire Perimeter | ■ Local Connector |
| ● Value at Risk | | | ■ Local Road |



Wyoming Type 3 Team
 8/27/2023 2208
 North American 1983 Datum, LatLong Grid