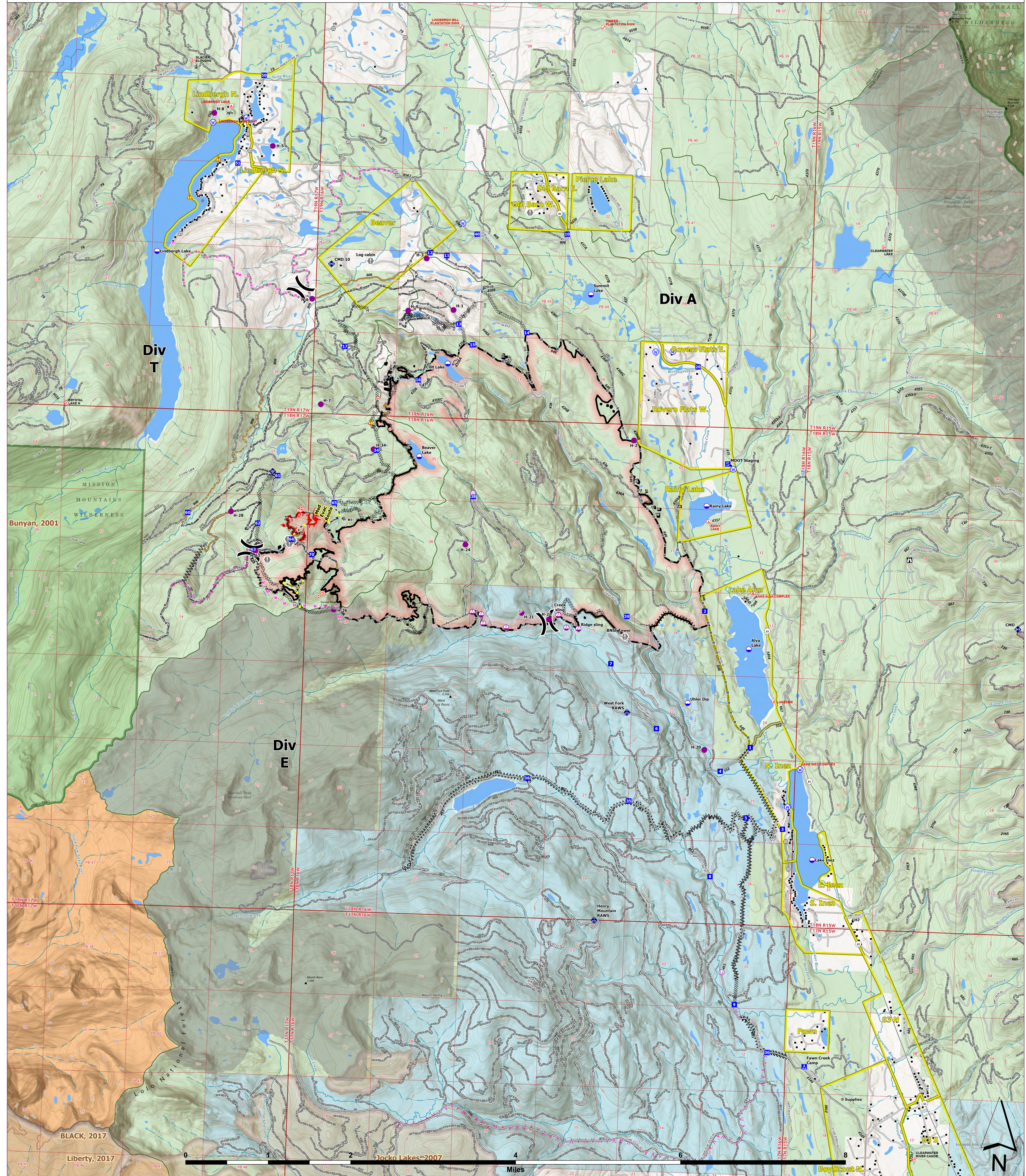




8/29/2023

OPERATIONS



Colt Fire
 MT-SWS-200549
8/29/2023
 7,154 Acres
 Fire perimeter updated
 from GPS and IR on 8/25/2023 @ 2322hrs

- | | | | | |
|--|---|--|--|--|
| <ul style="list-style-type: none"> ● Label Point ● Dip Site ● Helispot ● Sling Site ○ Unimproved Landing Area ⌋ Division Break ■ Drop Point ■ Camp ■ Staging Area ○ Lookout ● Hot Spot - Spot Fire ● Value at Risk | <ul style="list-style-type: none"> ● Other ⬮ Gate ⬮ Mobile Weather Unit ⬮ Internet Access ⬮ Repeater ⚠ Hazard ⬮ Water Source ⊠ Completed Dozer Line ⊠ Completed Fuel Break ⊠ Completed Hand Line ⊠ Completed Mixed Construction Line ⊠ Completed Road as Line | <ul style="list-style-type: none"> ⊠ Planned Fuel Break ⊠ Planned Hand Line ⊠ Planned Mixed Construction Line ⊠ Planned Road as Line — Access or Improved Road ⊠ Highlighted Feature ⊠ Other ⊠ Repair Line ⊠ Road Repair ⊠ Contained ⊠ Uncontained ⊠ Wildfire Daily Fire Perimeter | <ul style="list-style-type: none"> ⊠ Evacuation Areas ⊠ Structures ⊠ Campground ⊠ Trailhead ⊠ Boating Site ⊠ Interpretive Site ⊠ Administrative FS Boundary ⊠ Ranger District Boundary ⊠ FS Wilderness Boundary ⊠ Forest Service Roads Closed ⊠ Local Connector ⊠ Local Road | <ul style="list-style-type: none"> ⊠ Trail ⊠ Perennial Stream ⊠ Intermittent Stream ⊠ Perennial NHD Waterbody ⊠ Bureau of Indian Affairs (BIA) ⊠ Bureau of Land Management (BLM) ⊠ State ⊠ US Forest Service (USFS) ⊠ Private ⊠ Undetermined ⊠ USFS Roadless Areas ⊠ USFS Wilderness |
|--|---|--|--|--|



Remote Incident Support Team
 8/29/2023 1341
 North American 1983 Datum, LatLong Grid

Operations