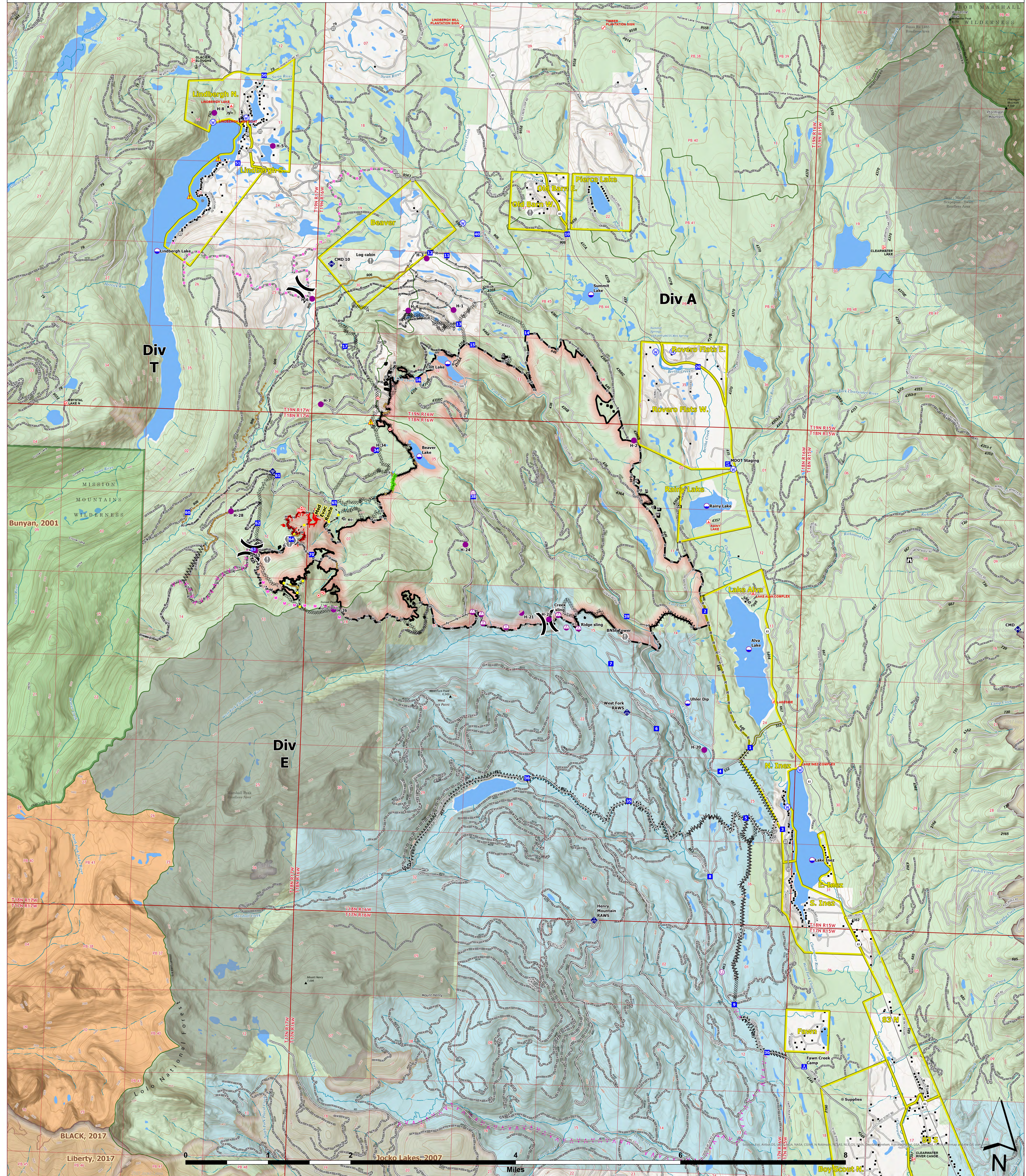




8/30/2023

# OPERATIONS



**Colt Fire**  
 MT-SWS-200549  
**8/30/2023**  
 7,154 Acres  
 Fire perimeter updated  
 from GPS and IR on 8/25/2023 @ 2322hrs

● Label Point	● Other	⊗ Completed Dozer Line	— Repair Line	— Trail
● Dip Site	⊗ Gate	⊗ Completed Fuel Break	— Road Repair	— Perennial Stream
● Helispot	⊗ Mobile Weather Unit	— Completed Hand Line	— Contained	— Intermittent Stream
● Sling Site	⊗ Internet Access	— Completed Mixed Construction Line	— Uncontained	— Perennial NHD Waterbody
● Unimproved Landing Area	⊗ Repeater	— Completed Road as Line	— Wildfire Daily Fire Perimeter	— USFS Roadless Areas
⊗ Division Break	⊗ Hazard	— Planned Fuel Break	— Evacuation Areas	— USFS Wilderness
● Drop Point	⊗ Water Source	— Planned Hand Line	— Administrative FS Boundary	— Bureau of Indian Affairs (BIA)
● Camp	⊗ Structures	— Planned Mixed Construction Line	— Ranger District Boundary	— Bureau of Land Management (BLM)
● Staging Area	⊗ Campground	— Planned Road as Line	— FS Wilderness Boundary	— State
● Lookout	⊗ Trailhead	— Access or Improved Road	— Forest Service Roads Closed	— US Forest Service (USFS)
● Hot Spot - Spot Fire	⊗ Boating Site	— Highlighted Feature	— Local Connector	— Private
● Value at Risk	⊗ Interpretive Site	— Other	— Local Road	— Undetermined



Remote Incident Support Team  
 8/30/2023 0505  
 North American 1983 Datum, LatLong Grid