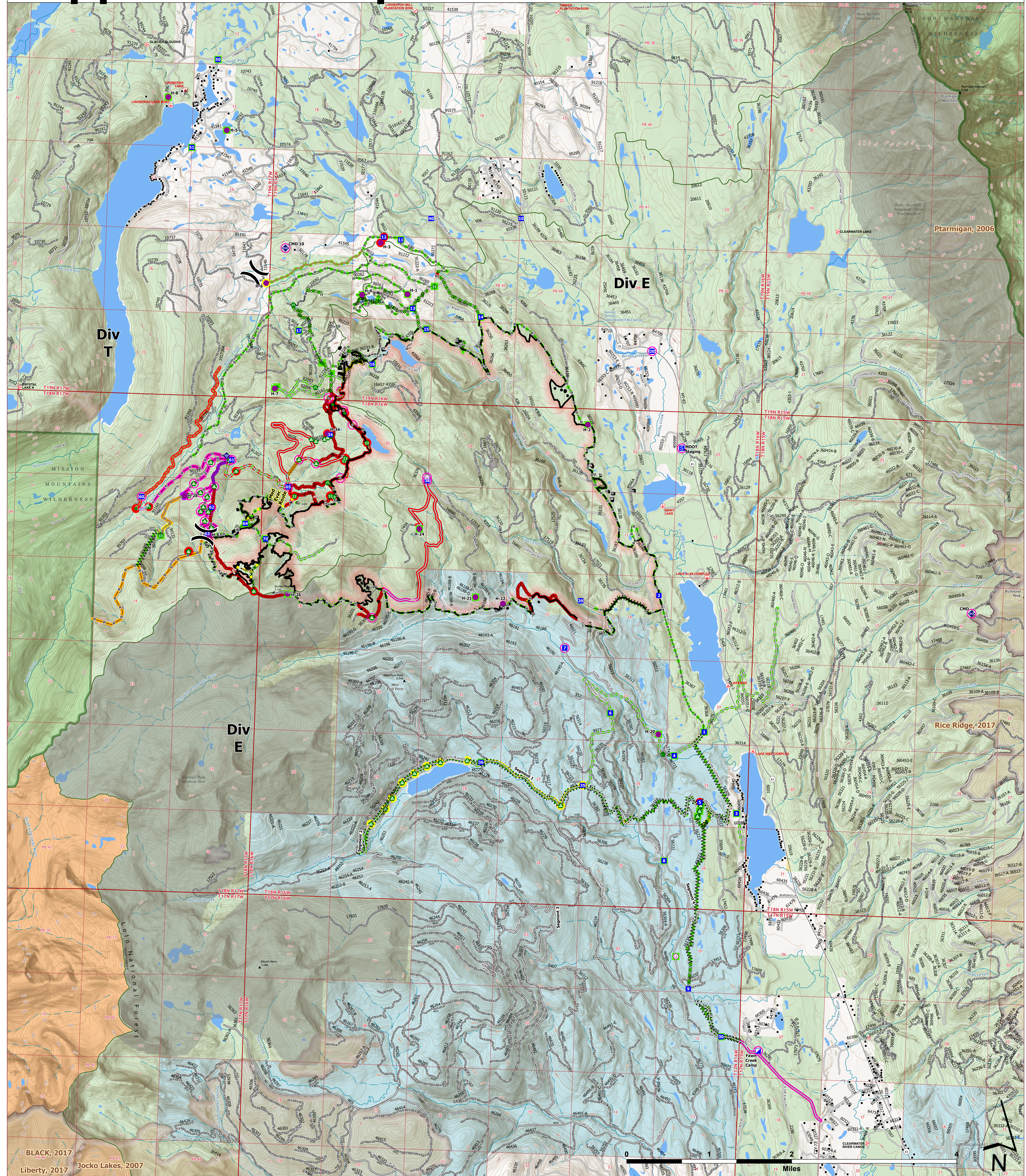


Suppression Repair



Colt Fire
 MT-SWS-200549
9/10/2023
 7,154 Acres
 Fire perimeter updated
 from GPS and IR on 8/25/2023 @ 2322hrs

- | | | | | | |
|--|--|---|--|--|---|
| <ul style="list-style-type: none"> ○ HeliSpot ⊗ Unimproved Landing Area ⌘ Division Break ⊠ Incident Command Post ⬇ Drop Point ⊙ Staging Area ● Other ⚡ Stream Crossing | <ul style="list-style-type: none"> ⬆ Repair Point ⬆ Landing or Log Deck ⬆ Culvert ⬆ Internet Access ⬆ Repeater ⬆ Completed Dozer Line ⬆ Completed Fuel Break ⬆ Completed Hand Line | <ul style="list-style-type: none"> — Completed Mixed Construction Line — Completed Road as Line — Access or Improved Road — Highlighted Feature — Other — Repair Line — Road Repair — Contained | <ul style="list-style-type: none"> — Wildfire Daily Fire Perimeter ● Event Point ○ Repair Status ○ In Use - Fire Management ○ Needs Assessment ● Repair Needed ● Completed - Ready for Inspection | <ul style="list-style-type: none"> ■ Completed - Inspected ● Other - See Comments — Event Line ○ Repair Status ○ In Use - Fire Management ○ Needs Assessment ● Repair Needed — In Progress | <ul style="list-style-type: none"> — Completed - Ready for Inspection — Completed - Inspected — No Repair Needed — ForestServiceRoads |
|--|--|---|--|--|---|

