

117°6'0"W

117°5'0"W

117°4'0"W

117°3'0"W

48°28'0"N

48°28'0"N

48°27'0"N

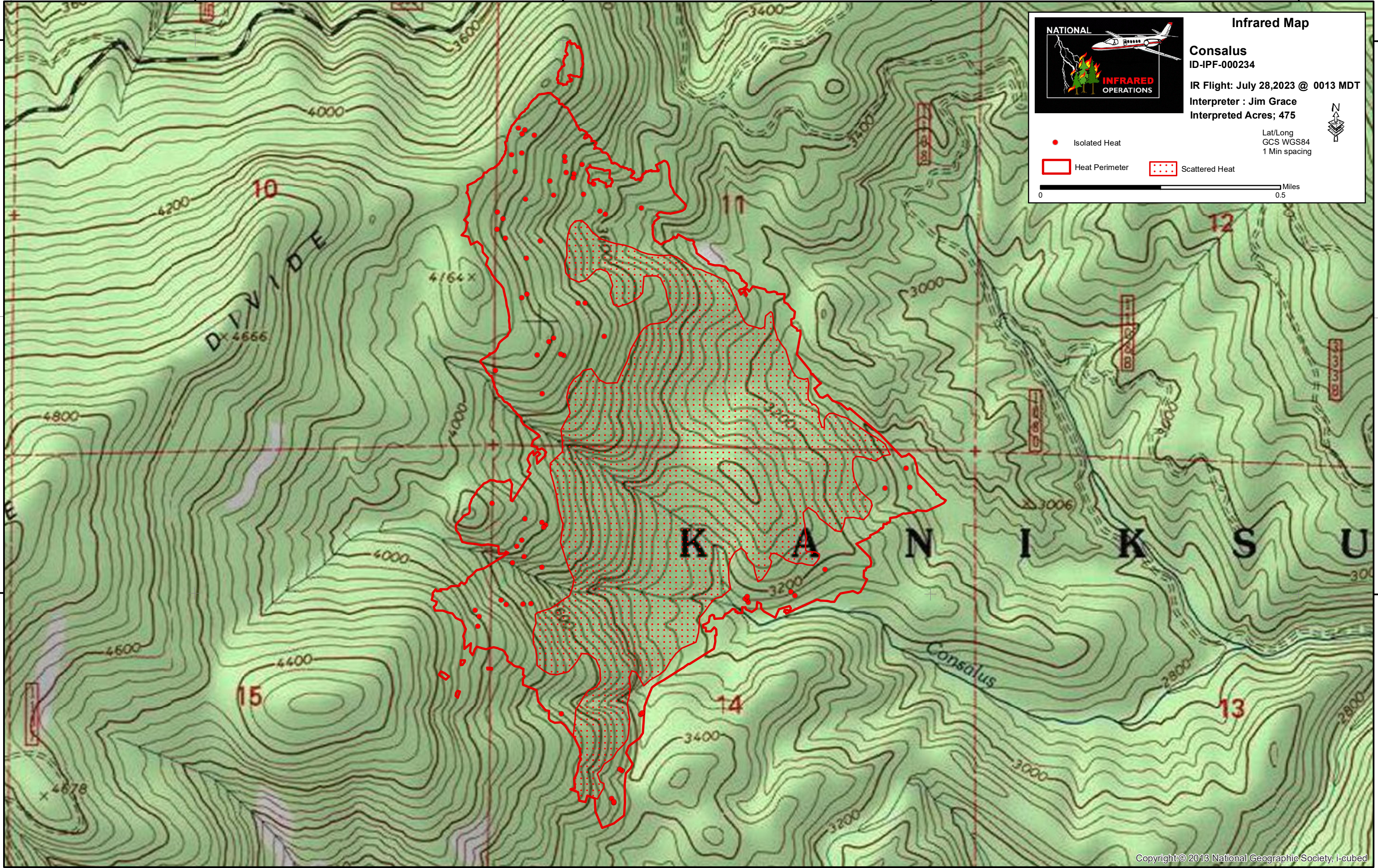
48°27'0"N

117°6'0"W

117°5'0"W

117°4'0"W

117°3'0"W



NATIONAL
INFRARED
OPERATIONS

Infrared Map

Consalus
ID-IPF-000234

IR Flight: July 28, 2023 @ 0013 MDT

Interpreter : Jim Grace
Interpreted Acres; 475

Lat/Long
GCS WGS84
1 Min spacing

- Isolated Heat
- Heat Perimeter
- Scattered Heat

Miles
0 0.5