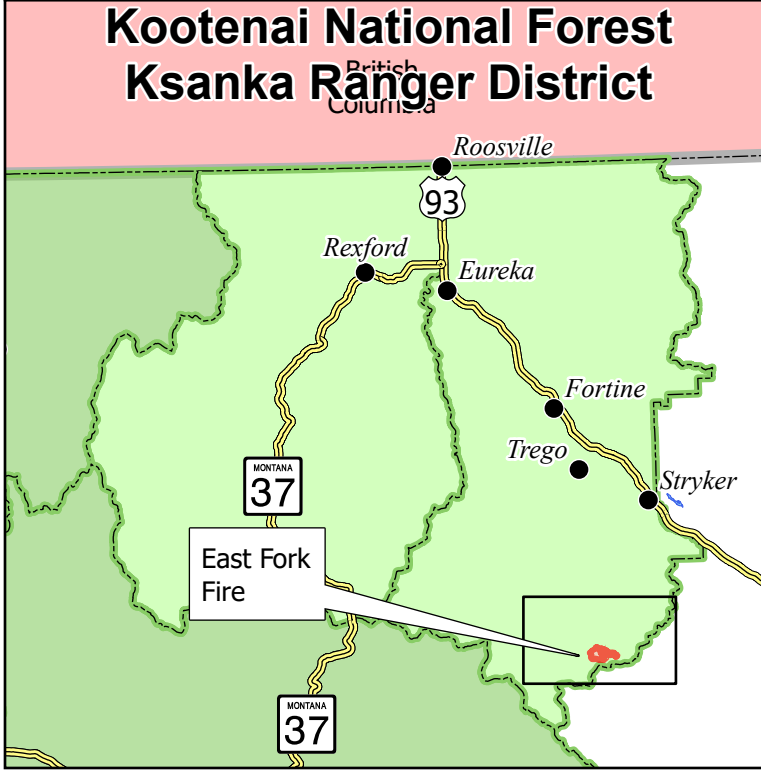
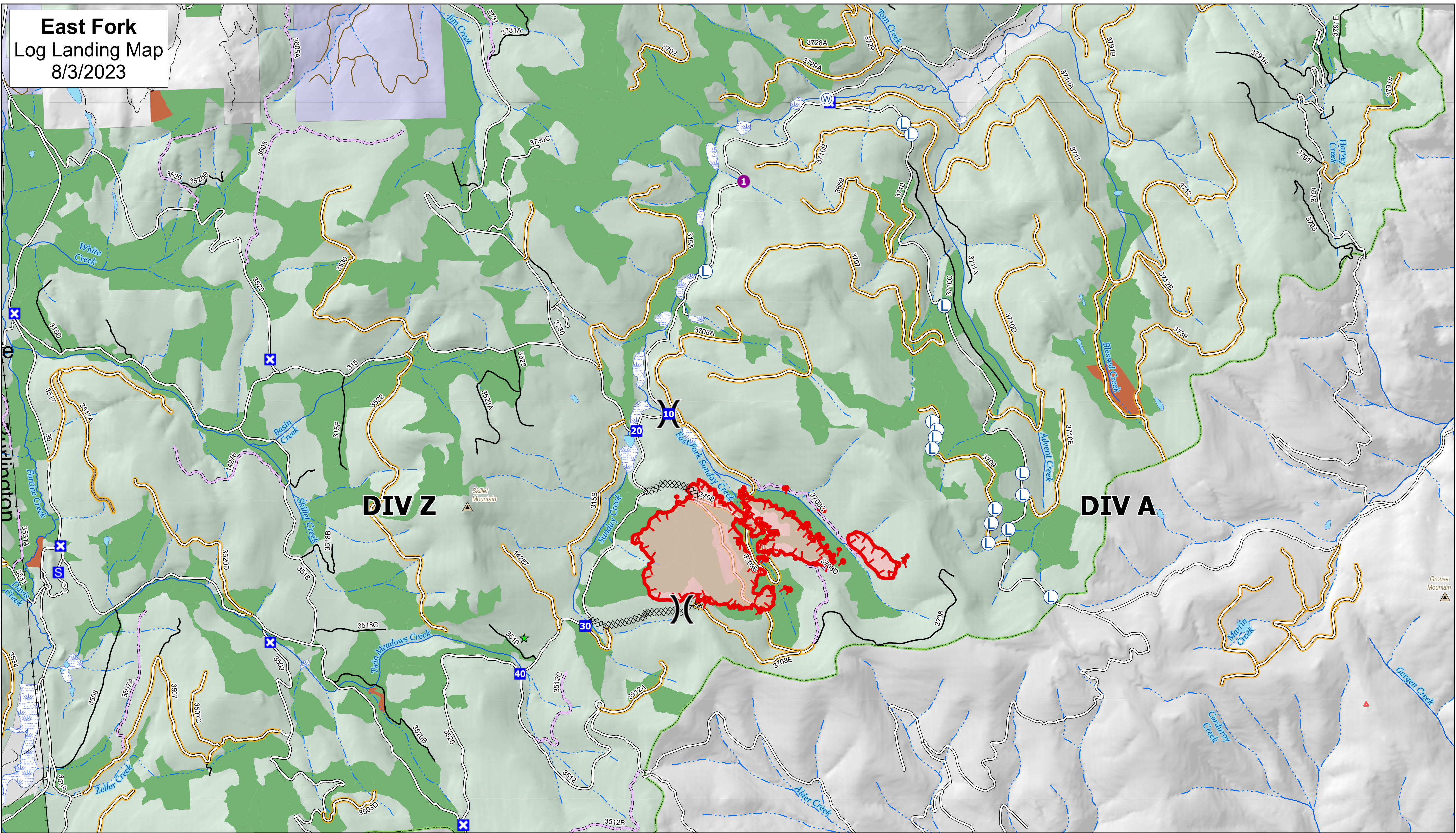


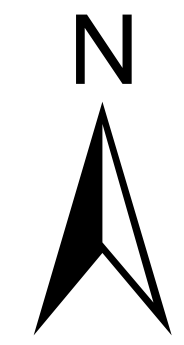
**East Fork
Log Landing Map
8/3/2023**



- Fill Site
- Approved Log Landing
- WWP WBP Plus Trees
- Helispot
- Division Break
- Drop Point
- Closure
- Staging Area
- Completed Dozer Line
- Uncontained

- Wildfire Daily Fire Perimeter
- MtnTop
- Roads**
- Other State
- Private
- Roads Open to Highway Legal Vehicles Only, Yearlong
- Roads Open to Highway Legal Vehicles Only, Seasonal
- Special Designation, Seasonal
- Restricted (Admin Use Allowed)
- Barrired or Impassable
- Open During Bear Year
- Railroad

- Kootenai National Forest District Boundaries
- Retained Existing OG
- Recruitment Potential OG
- Ownership**
- US Forest Service (Kootenai NF)
- State of Montana
- Other Private
- Waterbodies**
- Lake/Pond
- Swamp/Marsh
- Intermittent Stream
- Perennial Stream



KPM
8/3/2023
NAD 83 UTM zone 11N

