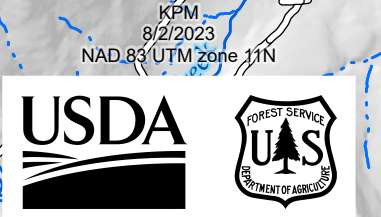
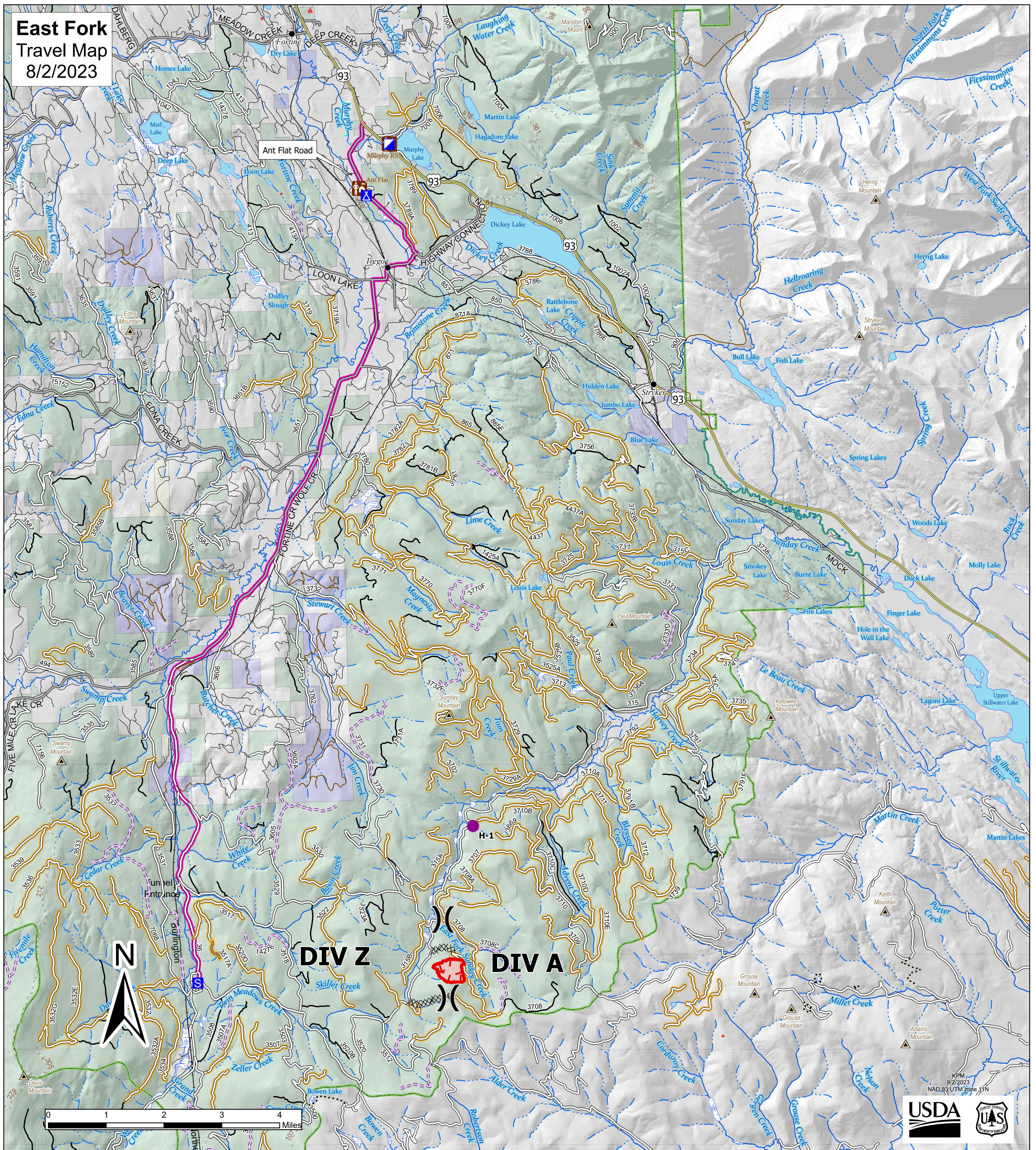
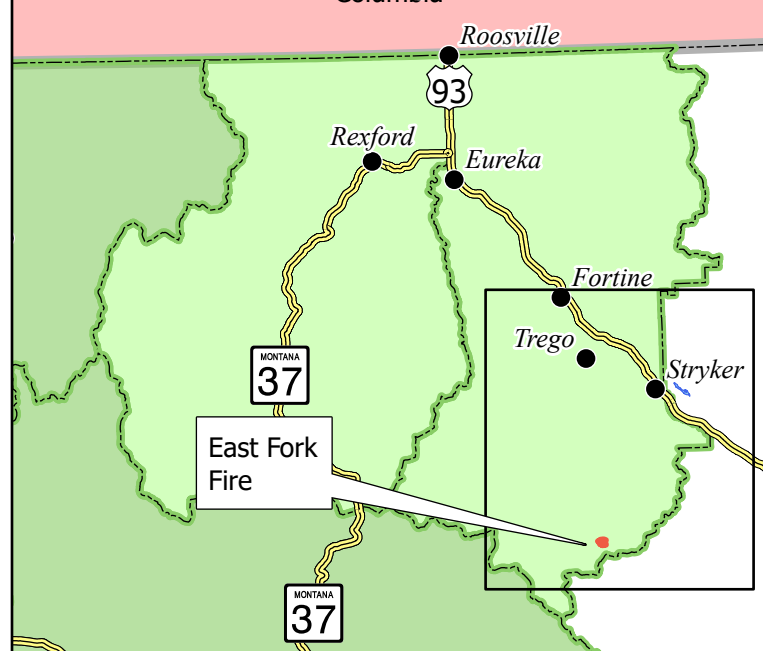


**East Fork  
Travel Map  
8/2/2023**



**Kootenai National Forest  
Ksanka Ranger District**



<ul style="list-style-type: none"> <li><span style="color: purple;">●</span> Label Point</li> <li><span style="color: purple;">●</span> Helispot</li> <li><b>))</b> Division Break</li> <li><span style="color: blue;">■</span> Incident Command Post</li> <li><span style="color: blue;">▲</span> Camp</li> <li><span style="color: blue;">S</span> Staging Area</li> <li><b>xxx</b> Completed Dozer Line</li> <li><span style="color: red;">■</span> Uncontained</li> <li><span style="color: red;">■</span> Wildfire Daily Fire Perimeter</li> <li><span style="color: brown;">■</span> KNFOffices</li> <li><span style="color: black;">●</span> Towns</li> <li><span style="color: black;">▲</span> MtnTop</li> </ul>	<p><b>Trails</b></p> <ul style="list-style-type: none"> <li>..... Trails Open to Motorcycles Only, Yearlong</li> <li>--- Non-Motorized Trails</li> </ul> <p><b>Roads</b></p> <ul style="list-style-type: none"> <li> County</li> <li> Other State</li> <li> Private</li> <li> Highway</li> <li> Roads Open to Highway Legal Vehicles Only, Yearlong</li> <li> Roads Open to Highway Legal Vehicles Only, Seasonal</li> <li> Special Designation, Seasonal</li> <li> Restricted (Admin Use Allowed)</li> <li> Barriered or Impassable</li> <li> Open During Bear Year</li> <li><span style="color: pink;">—</span> Travel Route</li> </ul>	<ul style="list-style-type: none"> <li> Railroad</li> <li> Kootenai National Forest District Boundaries</li> </ul> <p><b>Ownership</b></p> <ul style="list-style-type: none"> <li> American Forest Management</li> <li> US Forest Service (Kootenai NF)</li> <li> State of Montana</li> <li> Other Private</li> </ul> <p><b>Waterbodies</b></p> <ul style="list-style-type: none"> <li> Stream/River</li> <li> Lake/Pond</li> <li> Swamp/Marsh</li> <li> Connector</li> <li> Canal/Ditch</li> <li> Intermittent Stream</li> <li> Perennial Stream</li> </ul>
---	---	--