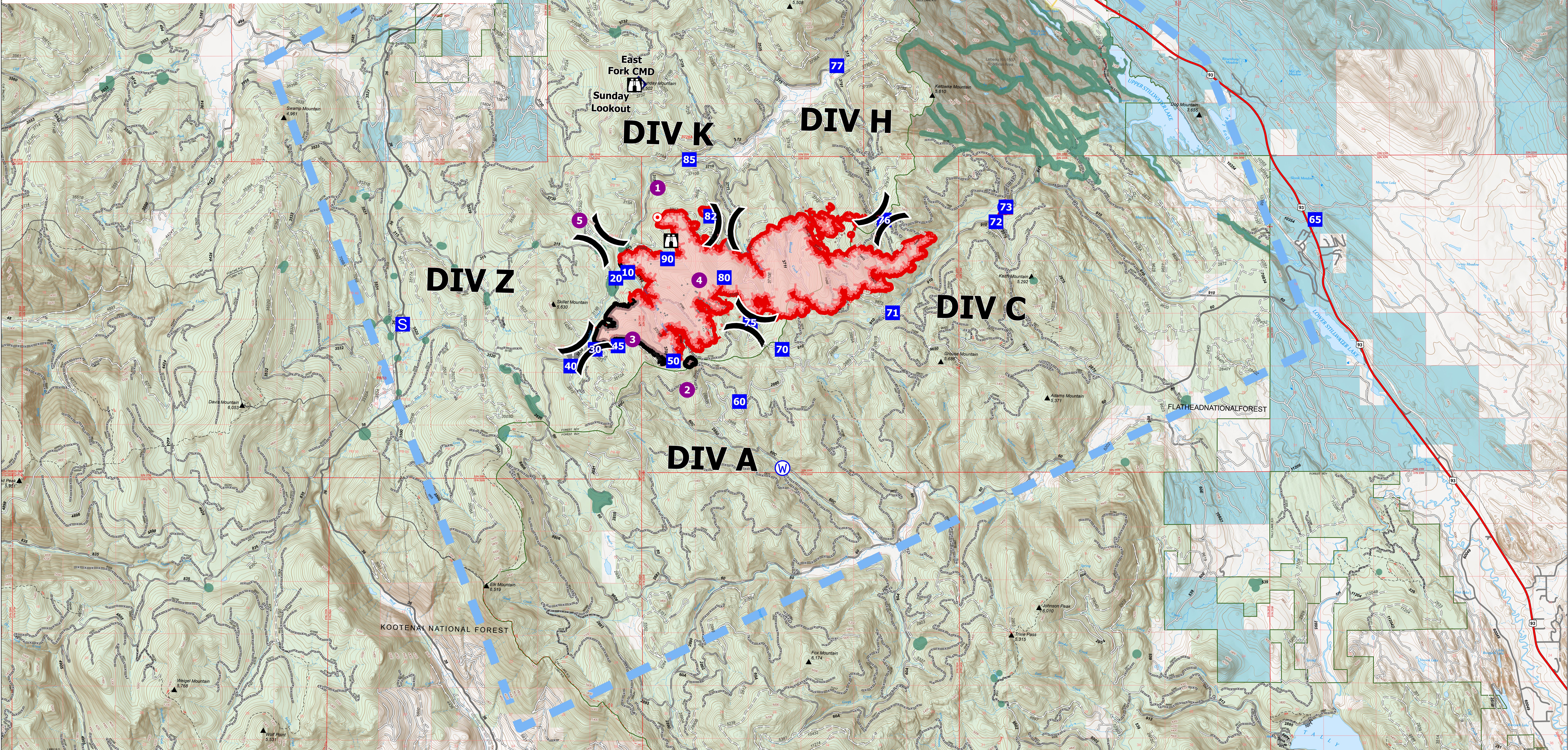
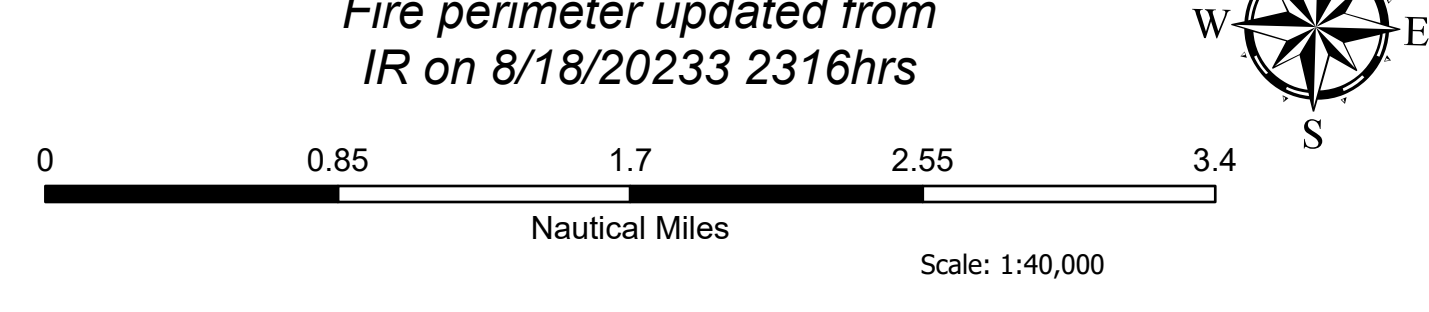


| IncidentName | FeatureCategory | Label | MapMethod | Comments | LatWGS84_DDM |
|--------------|-----------------------|------------------|---------------|---|---------------|
| East Fork | Drop Point | 10 | Mixed Methods | | 48° 32.504' N |
| East Fork | Drop Point | 20 | Mixed Methods | | 48° 32.407' N |
| East Fork | Drop Point | 30 | Mixed Methods | | 48° 31.238' N |
| East Fork | Drop Point | 40 | Mixed Methods | | 48° 30.962' N |
| East Fork | Drop Point | 90 | Mixed Methods | | 48° 32.724' N |
| East Fork | Drop Point | 50 | Mixed Methods | | 48° 31.047' N |
| East Fork | Drop Point | 60 | Mixed Methods | | 48° 30.377' N |
| East Fork | Drop Point | 70 | Mixed Methods | | 48° 31.236' N |
| East Fork | Drop Point | 75 | Mixed Methods | | 48° 31.678' N |
| East Fork | Drop Point | 45 | Mixed Methods | | 48° 31.293' N |
| East Fork | Drop Point | 80 | Mixed Methods | Actual DP 80 point | 48° 32.418' N |
| East Fork | Drop Point | 65 | Mixed Methods | | 48° 33.351' N |
| East Fork | Drop Point | 72 | Mixed Methods | New Drop Point in Div C | 48° 33.339' N |
| East Fork | Drop Point | 71 | Mixed Methods | New Drop Point in Div C | 48° 31.835' N |
| East Fork | Drop Point | 85 | Mixed Methods | Drop point - supply drop, Draft site at bridge | 48° 34.360' N |
| East Fork | Drop Point | 73 | Mixed Methods | | 48° 33.573' N |
| East Fork | Drop Point | 76 | Mixed Methods | | 48° 33.362' N |
| East Fork | Drop Point | 77 | Mixed Methods | | 48° 35.901' N |
| East Fork | Drop Point | 82 | Mixed Methods | Jun 3 2019/3707rd drop point for supplies/ spot fire support vehicle parking along shoulder of road | 48° 33.427' N |
| East Fork | Drop Point | 1 | Mixed Methods | Approved for T3 Helicopter | 48° 33.893' N |
| East Fork | Helispot | 1 | Mixed Methods | Approved for T3 Helicopter | 48° 30.569' N |
| East Fork | Helispot | 3 | Mixed Methods | Type 3 | 48° 31.401' N |
| East Fork | Helispot | 4 | Mixed Methods | Type 2 and 3 | 48° 32.374' N |
| East Fork | Helispot | 5 | Mixed Methods | Helispot for Medevac site | 48° 33.358' N |
| East Fork | Incident Command Post | | Mixed Methods | Murphy Lake Ranger Station | 48° 44.168' N |
| East Fork | Lookout | | Mixed Methods | | 48° 33.024' N |
| East Fork | Lookout | Sunday Lookout | Mixed Methods | | 48° 35.579' N |
| East Fork | Repeater | East Fork CMD | Mixed Methods | KNF-East Fork Fire | 48° 35.598' N |
| East Fork | Repeater | Marston Mountain | Mixed Methods | | 48° 45.865' N |
| East Fork | Value at Risk | | Mixed Methods | soil sediment study site, culvert trap and equipment in place, try to maintain | 48° 32.978' N |
| East Fork | Value at Risk | | Mixed Methods | white pine plus trees - do not cut. If fire moves this direction, implement mitigation measures to prevent damage to tree | 48° 31.158' N |
| East Fork | Water Source | | Mixed Methods | Logging activities near by | 48° 29.282' N |
| East Fork | Water Source | | Mixed Methods | | 48° 33.569' N |



AirOps
 East Fork
 MT-KNF-000262
 4,614 acres
 08/23/2023
 Fire perimeter updated from
 IR on 8/18/2023 2316hrs



- Temporary Flight Restriction
- Contained
- Uncontained
- Contained
- Uncontained
- Helispot
- x Division Break
- Drop Point

- Staging Area
- Lookout
- Hot Spot - Spot Fire
- Value at Risk
- Repeater
- Hazard
- Water Source
- Wildfire Perimeter

- Primary Highway
- Primary Paved
- Secondary Paved
- Secondary Dirt
- Paved
- Gravel Road
- Dirt Road
- Unimproved Road

- Forest Service Roads Closed
- USFS Roadless Areas
- Forest Service Land
- Bureau of Land Management Lands
- State Lands
- Aerial Fire Retardant Avoidance Areas



kmally
 8/22/2023 2024
 North American 1983 Datum.
 Lat/Long Grid

AirOps