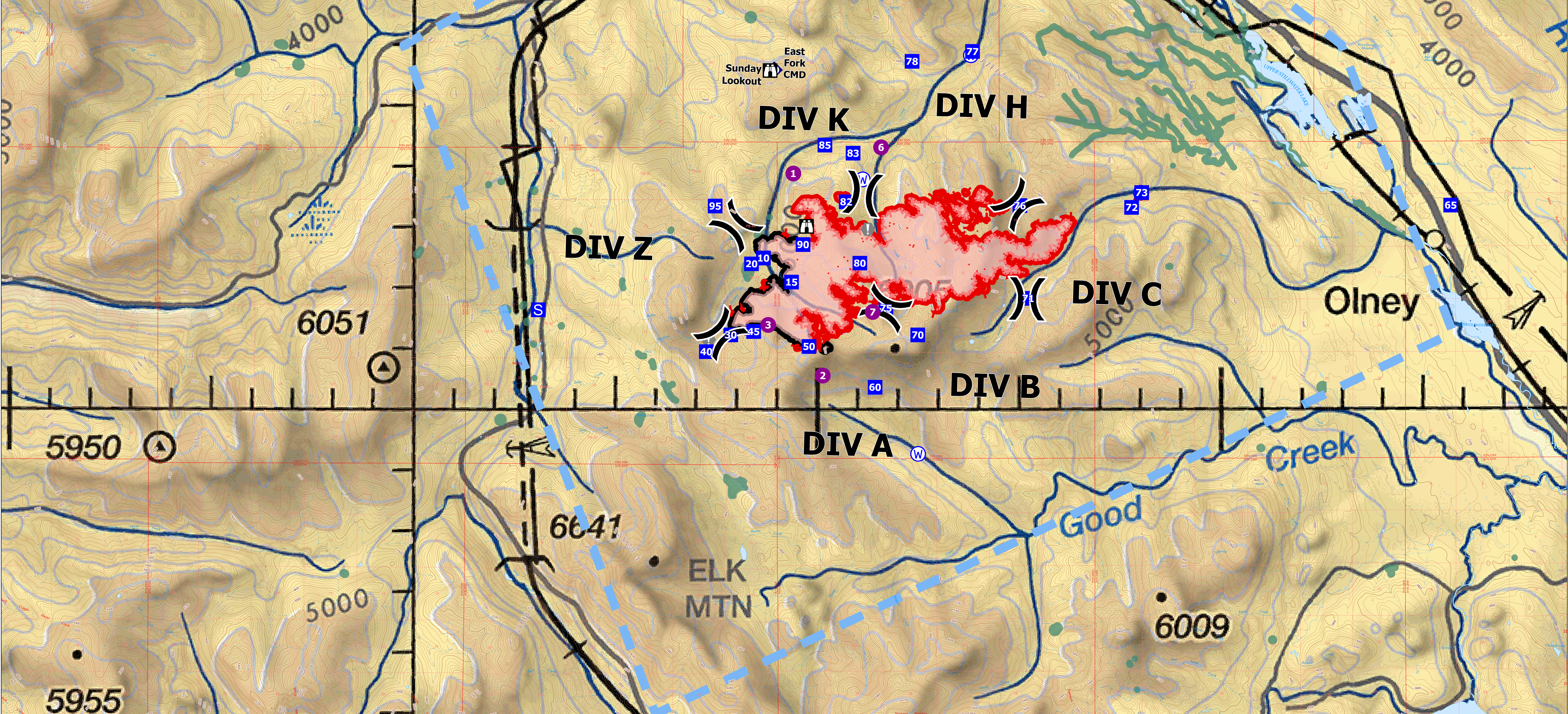
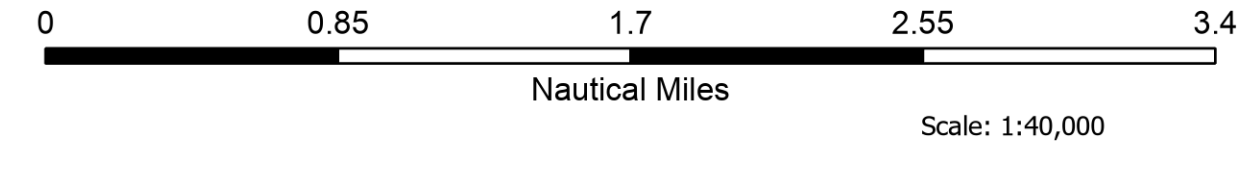
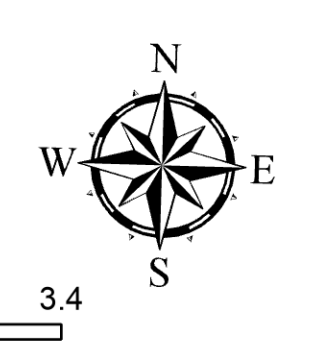


IncidentName	FeatureCategory	Label	MapMethod	Comments	LatWGS84_DDM	LongWGS84_DDM
East Fork	Drop Point	10	Mixed Methods		48° 32.504' N	114° 51.297' W
East Fork	Drop Point	15	Mixed Methods		48° 32.105' N	114° 50.633' W
East Fork	Drop Point	20	Mixed Methods		48° 32.407' N	114° 51.625' W
East Fork	Drop Point	30	Mixed Methods		48° 31.238' N	114° 52.138' W
East Fork	Drop Point	40	Mixed Methods		48° 30.962' N	114° 52.743' W
East Fork	Drop Point	45	Mixed Methods		48° 31.293' N	114° 51.571' W
East Fork	Drop Point	50	Mixed Methods		48° 31.947' N	114° 50.201' W
East Fork	Drop Point	60	Mixed Methods		48° 30.377' N	114° 48.565' W
East Fork	Drop Point	65	Mixed Methods		48° 33.351' N	114° 34.295' W
East Fork	Drop Point	70	Mixed Methods		48° 31.236' N	114° 47.508' W
East Fork	Drop Point	71	Mixed Methods	New Drop Point in Div C	48° 31.835' N	114° 44.772' W
East Fork	Drop Point	72	Mixed Methods	New Drop Point in Div C	48° 33.329' N	114° 42.200' W
East Fork	Drop Point	73	Mixed Methods		48° 33.973' N	114° 41.956' W
East Fork	Drop Point	75	Mixed Methods		48° 31.678' N	114° 48.295' W
East Fork	Drop Point	76	Mixed Methods		48° 33.362' N	114° 44.974' W
East Fork	Drop Point	77	Mixed Methods		48° 35.901' N	114° 46.143' W
East Fork	Drop Point	78	Mixed Methods		48° 35.739' N	114° 47.642' W
East Fork	Drop Point	80	Mixed Methods	Actual DP 80 point	48° 32.418' N	114° 48.940' W
East Fork	Drop Point	82	Mixed Methods	June, 366rd/3707rd drop point for supplies/ spot fire support vehicle parking along shoulder of road	48° 33.427' N	114° 49.276' W
East Fork	Drop Point	83	Mixed Methods		48° 34.227' N	114° 49.106' W
East Fork	Drop Point	85	Mixed Methods	Drop point - supply drop, Draft site at bridge	48° 34.360' N	114° 49.804' W
East Fork	Drop Point	90	Mixed Methods		48° 32.724' N	114° 50.347' W
East Fork	Drop Point	95	Mixed Methods	Updated to Drop Point 8/24, Helispot for medicavac site	48° 33.358' N	114° 52.525' W
East Fork	Helispot	1	Mixed Methods	Approved for T3 Helicopter	48° 33.893' N	114° 50.588' W
East Fork	Helispot	2	Mixed Methods	Approved for T3 Helicopter	48° 30.569' N	114° 49.861' W
East Fork	Helispot	3	Mixed Methods	Type 3	48° 31.401' N	114° 51.211' W
East Fork	Helispot	6	Mixed Methods		48° 34.323' N	114° 48.412' W
East Fork	Helispot	7	Mixed Methods		48° 31.613' N	114° 48.623' W
East Fork	Incident Command Post		Mixed Methods	Murphy Lake Ranger Station	48° 44.168' N	114° 52.053' W
East Fork	Lookout		Mixed Methods		48° 33.024' N	114° 50.260' W
East Fork	Lookout	Sunday Lookout	Mixed Methods		48° 35.379' N	114° 51.002' W
East Fork	Repeater	East Fork CMD	Mixed Methods	KNF-East Fork Fire	48° 35.598' N	114° 51.059' W
East Fork	Repeater	Marston Mountain	Mixed Methods		48° 45.865' N	114° 47.427' W
East Fork	Value at Risk		Mixed Methods	soil sediment study site, culvert trap and equipment in place, try to maintain	48° 32.978' N	114° 48.742' W
East Fork	Value at Risk		Mixed Methods	white pine plus tree, do not cut, if fire moves this direction, implement mitigation measures to prevent damage to tree	48° 31.158' N	114° 52.687' W
East Fork	Water Source		Mixed Methods	Logging activities near by,	48° 29.282' N	114° 47.502' W
East Fork	Water Source		Mixed Methods		48° 33.669' N	114° 41.979' W
East Fork	Water Source		Mixed Methods		48° 35.838' N	114° 46.183' W
East Fork	Water Source		Mixed Methods	Needs improvement/dammed up	48° 33.796' N	114° 48.868' W



AirOps
 East Fork
 MT-KNF-000262
 5106 acres
 8/25/2023
 Fire perimeter updated from
 IR on 8/25/2023 0003hrs



- Temporary Flight Restriction
- Contained
- Uncontained
- Contained
- Uncontained
- Helispot

- ⌘ Division Break
- Drop Point
- S Staging Area
- Lookout
- Hot Spot - Spot Fire
- Value at Risk

- ◆ Repeater
- ▲ Hazard
- W Water Source
- Wildfire Perimeter
- Aerial Fire Retardant Avoidance Areas

kmally
 8/25/2023 0923
 North American 1983 Datum,
 Lat/Long Grid