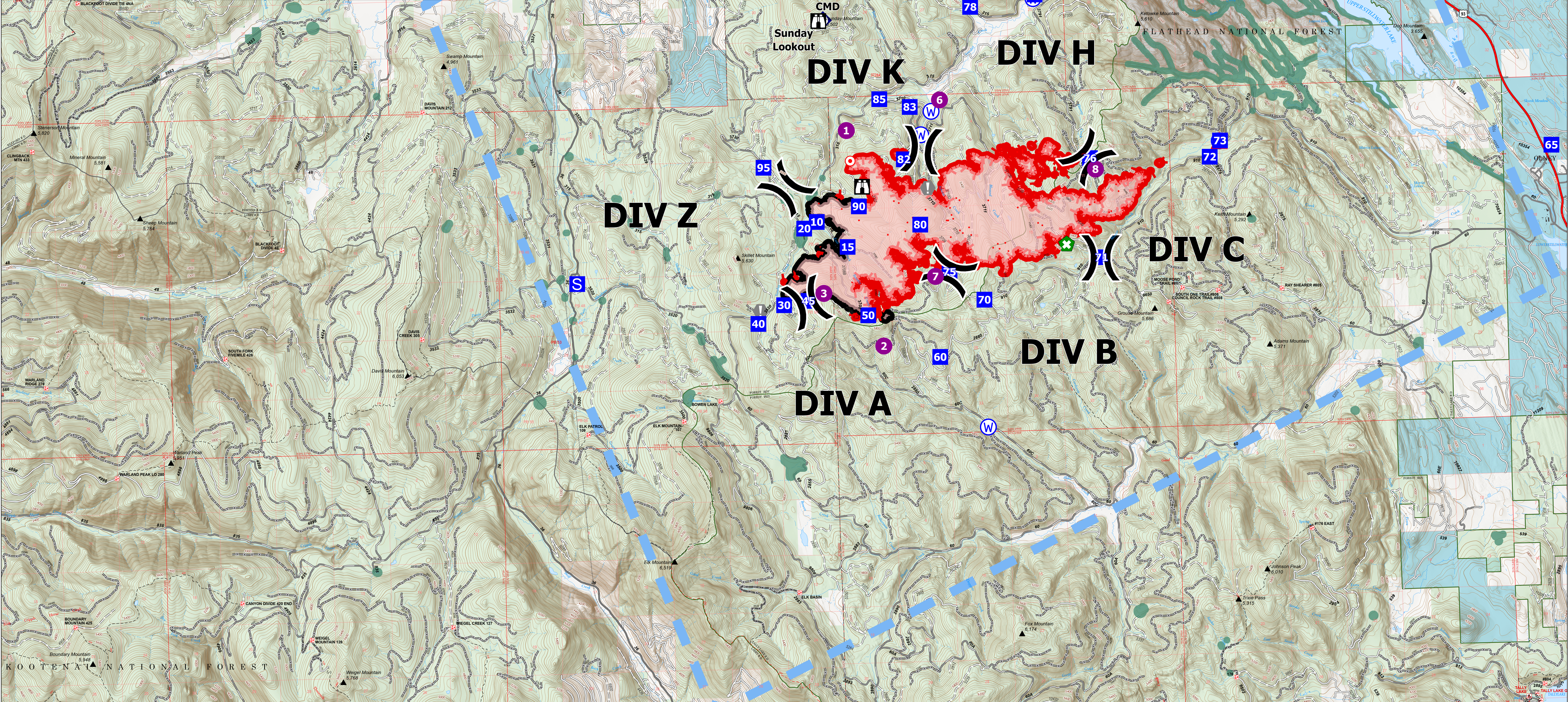
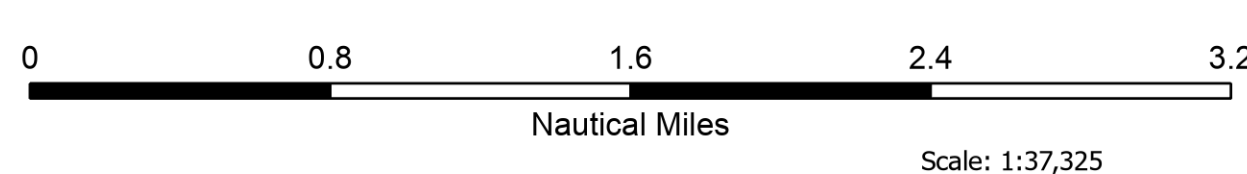
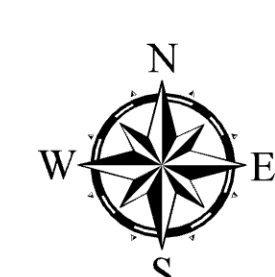


IncidentName	FeatureCategory	Label	Comments	LatWGS84_DDM	LongWGS84_DDM
East Fork	Drop Point	10		48° 32.504' N	114° 51.229' W
East Fork	Drop Point	15		48° 32.105' N	114° 50.633' W
East Fork	Drop Point	20		48° 32.407' N	114° 51.625' W
East Fork	Drop Point	30		48° 31.238' N	114° 52.138' W
East Fork	Drop Point	40		48° 30.962' N	114° 52.743' W
East Fork	Drop Point	45		48° 31.293' N	114° 51.571' W
East Fork	Drop Point	50		48° 31.947' N	114° 50.201' W
East Fork	Drop Point	60		48° 30.377' N	114° 48.566' W
East Fork	Drop Point	65		48° 33.351' N	114° 34.295' W
East Fork	Drop Point	70		48° 31.236' N	114° 47.508' W
East Fork	Drop Point	71	New Drop Point in Div C	48° 31.835' N	114° 44.772' W
East Fork	Drop Point	72	New Drop Point in Div C	48° 33.329' N	114° 42.206' W
East Fork	Drop Point	73		48° 33.373' N	114° 41.856' W
East Fork	Drop Point	75		48° 31.678' N	114° 48.295' W
East Fork	Drop Point	76		48° 33.362' N	114° 44.974' W
East Fork	Drop Point	77		48° 35.901' N	114° 46.143' W
East Fork	Drop Point	78		48° 35.739' N	114° 47.642' W
East Fork	Drop Point	80	Actual DP 80 point	48° 32.418' N	114° 48.940' W
East Fork	Drop Point	82	June, 3659r(3707r) drop point for supplies/ spot fire support vehicle parking along shoulder of road	48° 33.427' N	114° 49.276' W
East Fork	Drop Point	83		48° 34.227' N	114° 49.106' W
East Fork	Drop Point	85	Drop point - supply drop, Draft site at bridge	48° 34.360' N	114° 49.804' W
East Fork	Drop Point	90		48° 32.724' N	114° 50.347' W
East Fork	Drop Point	95	Updated to Drop Point 8/24, Helispot for Medicavac site	48° 33.358' N	114° 52.525' W
East Fork	Helispot	1	Approved for T3 Helicopter	48° 33.893' N	114° 50.588' W
East Fork	Helispot	2	Approved for T3 Helicopter	48° 30.569' N	114° 51.211' W
East Fork	Helispot	3	Type 3	48° 31.401' N	114° 51.211' W
East Fork	Helispot	6		48° 34.323' N	114° 48.412' W
East Fork	Helispot	7		48° 31.613' N	114° 48.623' W
East Fork	Helispot	8	4x4 ground access. Recommend dust abatement before use.	48° 33.191' N	114° 44.855' W
East Fork	Incident Command Post		Murphy Lake Ranger Station	48° 44.168' N	114° 52.053' W
East Fork	Lookout			48° 33.204' N	114° 50.269' W
East Fork	Lookout	Sunday Lookout		48° 35.579' N	114° 51.002' W
East Fork	Repeater	East Fork CMD	KNF-East Fork Fire	48° 35.598' N	114° 51.059' W
East Fork	Repeater	Marston Mountain		48° 45.865' N	114° 47.427' W
East Fork	Value at Risk		soil sediment study site, culvert trap and equipment in place, try to maintain	48° 32.978' N	114° 48.742' W
East Fork	Value at Risk		white pine plus tree, do not cut. If fire moves this direction, implement mitigation measures to prevent damage to tree	48° 31.158' N	114° 52.687' W
East Fork	Water Source		Logging activities near by.	48° 29.382' N	114° 47.502' W
East Fork	Water Source			48° 33.569' N	114° 41.925' W
East Fork	Water Source			48° 35.838' N	114° 46.183' W
East Fork	Water Source		Needs improvement/dammed up	48° 33.796' N	114° 48.868' W
East Fork	Water Source		would need some improvement, clearing down wood	48° 34.151' N	114° 48.616' W



**AirOps**  
 East Fork  
 MT-KNF-000262  
 5102 acres

Fire perimeter updated from  
 IR on 8/25/2023 2215hrs



- Label Point
- Helispot
- ⌘ Division Break
- Drop Point
- Staging Area
- ⌘ Lookout
- ⊙ Hot Spot - Spot Fire
- ⬇ Value at Risk
- ⬆ Retardant in Avoidance Area
- ⬇ Repeater
- ⚠ Hazard
- Ⓜ Water Source
- Temporary Flight Restriction
- IR Isolated Heat Source
- Aerial Fire Retardant Avoidance Areas
- Wildfire Perimeter
- Contained
- Uncontained
- LeBeauRNA



kmally  
 8/26/2023 2103  
 North American 1983 Datum  
 Lat/Long Grid

AirOps