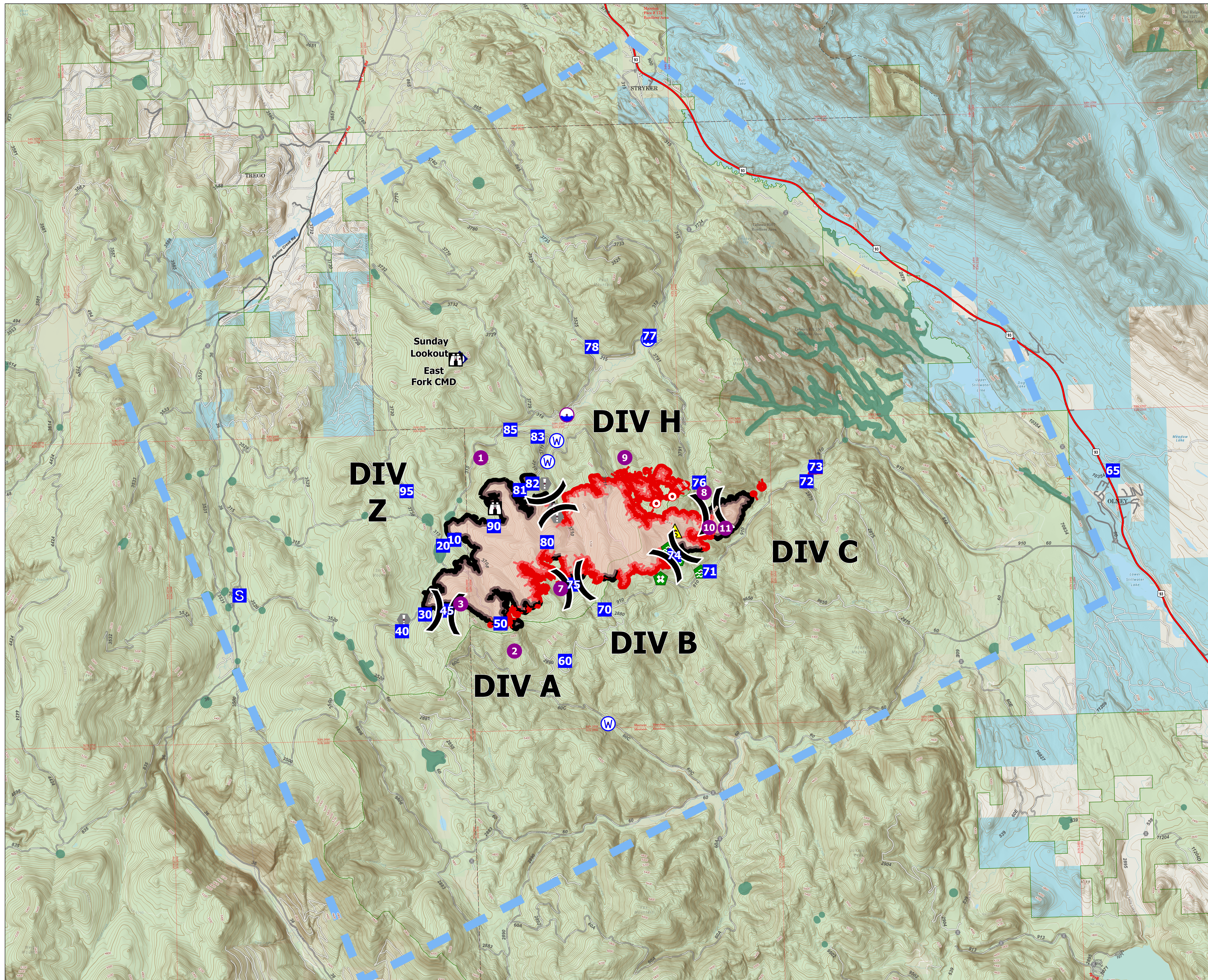


FeatureCateg	Label	LatWGS84_DDM	LongWGS84_DDM	Comments
Dip Site		48° 34.585' N	114° 48.336' W	Type 2 and 3, Beaver Ponds
Drop Point	10	48° 32.504' N	114° 51.329' W	
Drop Point	20	48° 32.407' N	114° 51.625' W	
Drop Point	30	48° 31.238' N	114° 52.138' W	
Drop Point	40	48° 30.962' N	114° 52.743' W	
Drop Point	45	48° 31.293' N	114° 51.571' W	
Drop Point	50	48° 31.047' N	114° 50.201' W	
Drop Point	60	48° 30.377' N	114° 48.566' W	
Drop Point	65	48° 33.351' N	114° 34.295' W	
Drop Point	70	48° 31.236' N	114° 47.508' W	
Drop Point	71	48° 31.835' N	114° 44.772' W	New Drop Point in Div C
Drop Point	72	48° 33.329' N	114° 42.206' W	New Drop Point in Div C
Drop Point	73	48° 33.573' N	114° 41.956' W	
Drop Point	74	48° 32.131' N	114° 45.672' W	
Drop Point	75	48° 31.678' N	114° 48.295' W	
Drop Point	76	48° 33.362' N	114° 44.974' W	
Drop Point	77	48° 35.901' N	114° 46.143' W	
Drop Point	78	48° 35.739' N	114° 47.642' W	
Drop Point	80	48° 32.418' N	114° 48.940' W	Actual DP 80 point
Drop Point	81	48° 33.323' N	114° 49.605' W	Drop point at dozer push - parking and UAS ops
Drop Point	82	48° 33.427' N	114° 49.276' W	Junt. 3669rd/ 3707rd drop point for supplies/ spot fire support vehicle parking along shoulder of road
Drop Point	83	48° 34.227' N	114° 49.106' W	
Drop Point	85	48° 34.360' N	114° 49.804' W	Drop point - supply drop, Draft site at bridge
Drop Point	90	48° 32.718' N	114° 50.300' W	This is actual location on the ground
Drop Point	95	48° 33.358' N	114° 52.525' W	Updated to Drop Point 8/24, Helispot for Medicavac site
Helispot	1	48° 33.893' N	114° 50.588' W	Approved for T3 Helicopter
Helispot	10	48° 32.588' N	114° 44.751' W	
Helispot	11	48° 32.568' N	114° 44.336' W	
Helispot	2	48° 30.569' N	114° 49.861' W	Approved for T3 Helicopter
Helispot	3	48° 31.401' N	114° 51.211' W	Type 3
Helispot	7	48° 31.613' N	114° 48.623' W	Type 3
Helispot	8	48° 33.191' N	114° 44.855' W	Type 2 and 3, Needs dust abatement
Helispot	9	48° 33.826' N	114° 46.872' W	Type 2 and 3, Needs dust abatement
Hot Spot - Spot Fire		48° 31.309' N	114° 51.589' W	lined and mopped up
Hot Spot - Spot Fire		48° 33.025' N	114° 46.093' W	
Hot Spot - Spot Fire		48° 33.135' N	114° 45.678' W	cold - out
Incident Command Post		48° 55.139' N	115° 05.251' W	Iowa Flats Rd and Airport Rd
Lookout		48° 33.024' N	114° 50.260' W	
Lookout	Sunday Lookout	48° 35.587' N	114° 51.164' W	
Repeater	East Fork CMD	48° 35.598' N	114° 51.059' W	KNF-East Fork Fire
Repeater	Eureka Base Camp	48° 55.074' N	115° 05.207' W	
Repeater	Marston Mountain	48° 45.865' N	114° 47.427' W	
Repeater	Pinkham	48° 38.582' N	115° 05.497' W	
Repeater	Werner Peak	48° 34.647' N	114° 25.974' W	
Retardant in Avoidance Area		48° 32.061' N	114° 45.571' W	intermittent stream
Retardant in Avoidance Area		48° 31.742' N	114° 46.041' W	
Staging Area		48° 31.649' N	114° 56.907' W	
Value at Risk		48° 32.978' N	114° 48.742' W	soil sediment study site, culvert trap and equipment in place, try to maintain
Value at Risk		48° 31.158' N	114° 52.687' W	white pine plus tree, do not cut, if fire moves this direction, implement mitigation measures to prevent damage to tree
Value at Risk		48° 33.421' N	114° 48.959' W	soil sediment research plot, try not to disturb
Value at Risk		48° 32.851' N	114° 48.663' W	soil sediment research plot, try to maintain
Water Development or Draft Site		48° 32.248' N	114° 45.821' W	Porta-tank
Water Development or Draft Site		48° 32.134' N	114° 45.676' W	Porta-tank
Water Development or Draft Site		48° 31.836' N	114° 44.999' W	
Water Source		48° 29.282' N	114° 47.502' W	Logging activities near by.
Water Source		48° 33.569' N	114° 41.975' W	
Water Source		48° 35.838' N	114° 46.183' W	
Water Source		48° 33.796' N	114° 48.868' W	Needs improvement/dammed up
Water Source		48° 34.151' N	114° 48.616' W	would need some improvement, clearing down wood

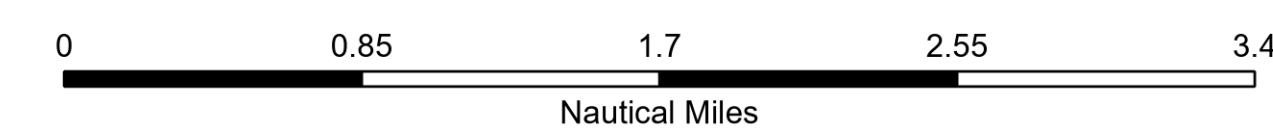


Comms

East Fork
MT-KNF-000262
5162 acres

09/05/2023

Fire perimeter updated from
IR on 8/31/2023 2208 hrs

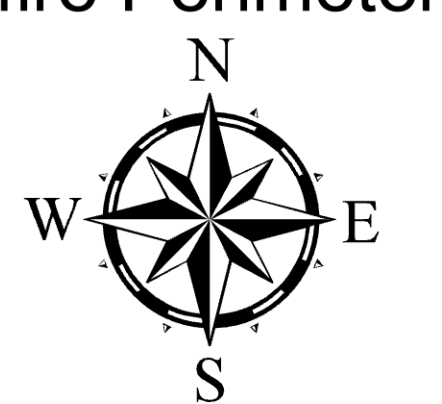


- Primary Highway
- Primary Paved Road
- Secondary Paved Road
- Paved Road
- ~ Gravel Road
- ~ Dirt Road
- Dip Site
- Helispot

- ⌘ Division Break
- Drop Point
- Ⓢ Staging Area
- Ⓜ Lookout
- ⦿ Hot Spot - Spot Fire
- ⦿ Value at Risk
- 🏠 Water Development or Draft Site
- 🌿 Retardant in Avoidance Area

- 📶 Repeater
- ⚠ Safety Zone
- ⚠ Hazard
- 💧 Water Source
- 📍 Retardant Drop
- 🚫 Temporary Flight Restriction
- Contained
- Uncontained

- 🔴 Wildfire Perimeter
- 🟢 Aerial Fire Retardant Avoidance Areas
- 🟡 USFS Roadless Areas
- 🟠 Bureau of Land Management Lands
- 🟦 State Lands
- 🟣 Retardant Drop
- 🟡 Temporary Flight Restriction
- 🟤 Contained
- 🔴 Uncontained
- Label Point
- Contained
- Uncontained
- 🔴 Wildfire Perimeter



NR Team 5
9/4/2023 2303
North American 1983 Datum,
LatLong Grid