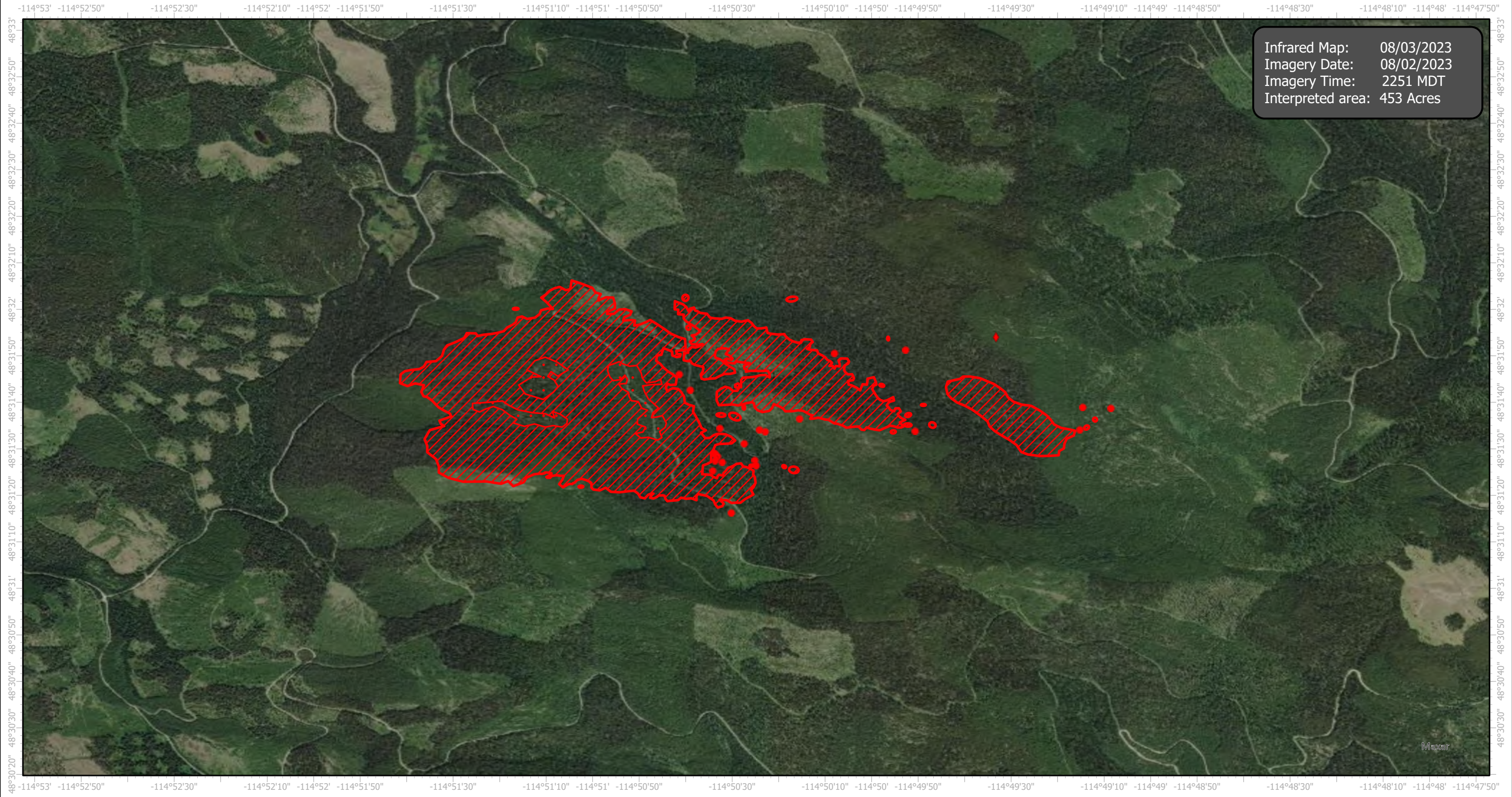


EastFork Infrared Map

Incident # (MT-KNF-000262)



Infrared Map: 08/03/2023
Imagery Date: 08/02/2023
Imagery Time: 2251 MDT
Interpreted area: 453 Acres

GCS WGS 1984
Scale: 1:24,000



- IR Isolated Heat Source
- ◆ Possible IR Heat Source
- ▨ IR Intense Heat
- ▭ IR Scattered Heat
- ▭ IR Heat Perimeter

Infrared Interrupter: Daniel LeVrier
email: daniel.levrier@usda.gov