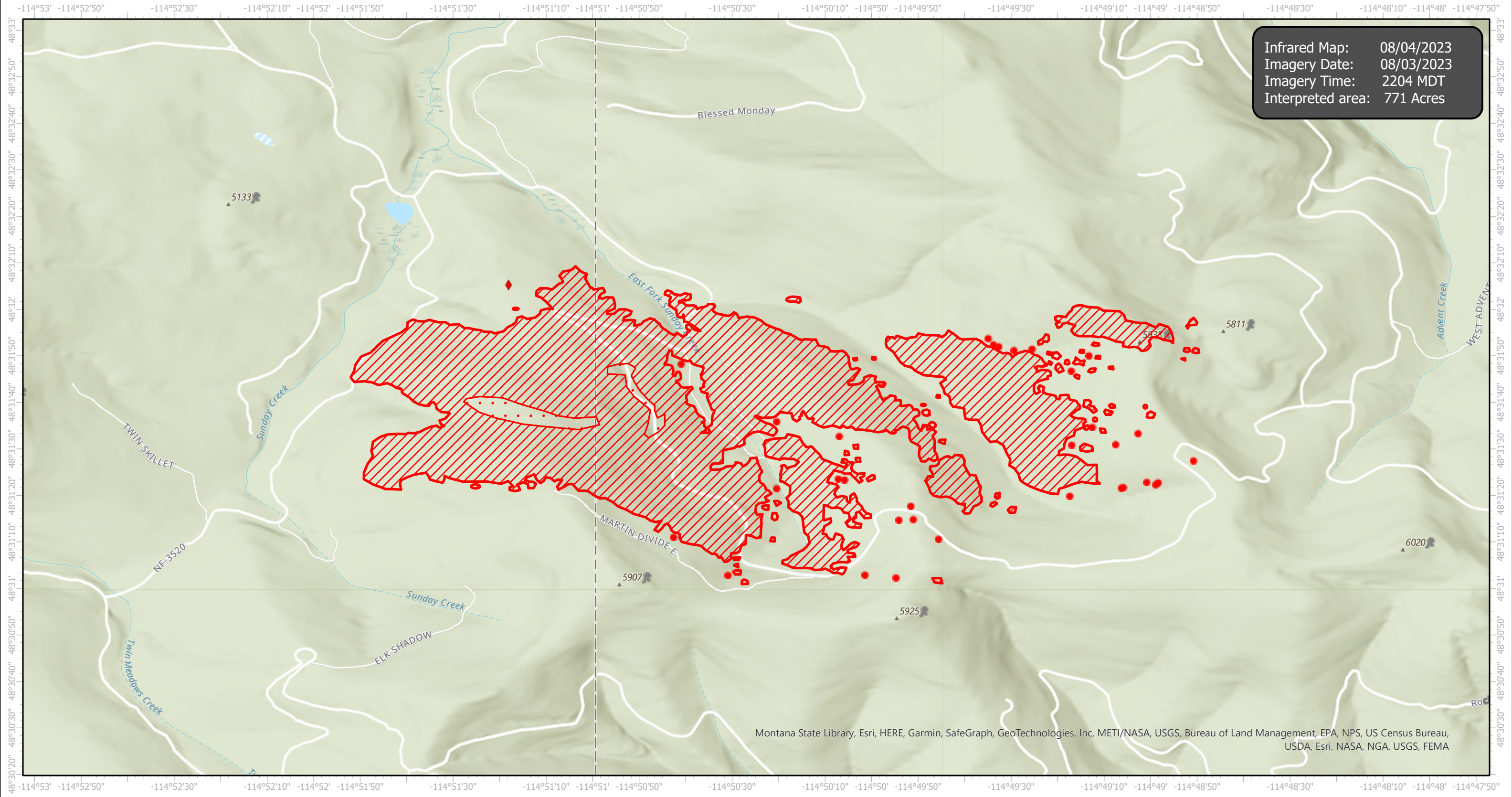


EastFork Infrared Map

Incident # (MT-KNF-000262)



Infrared Map: 08/04/2023
Imagery Date: 08/03/2023
Imagery Time: 2204 MDT
Interpreted area: 771 Acres



Montana State Library, Esri, HERE, Garmin, SafeGraph, GeoTechnologies, Inc, METI/NASA, USGS, Bureau of Land Management, EPA, NPS, US Census Bureau, USDA, Esri, NASA, NGA, USGS, FEMA

N
W E
S

GCS WGS 1984
Scale: 1:24,000

0 1 2 Miles

- IR Isolated Heat Source
- ◆ Possible IR Heat Source
- ▭ IR Heat Perimeter
- ▨ IR Intense Heat
- ▭ IR Scattered Heat

Infrared Interrupter: Daniel LeVrier
email: daniel.levrier@usda.gov