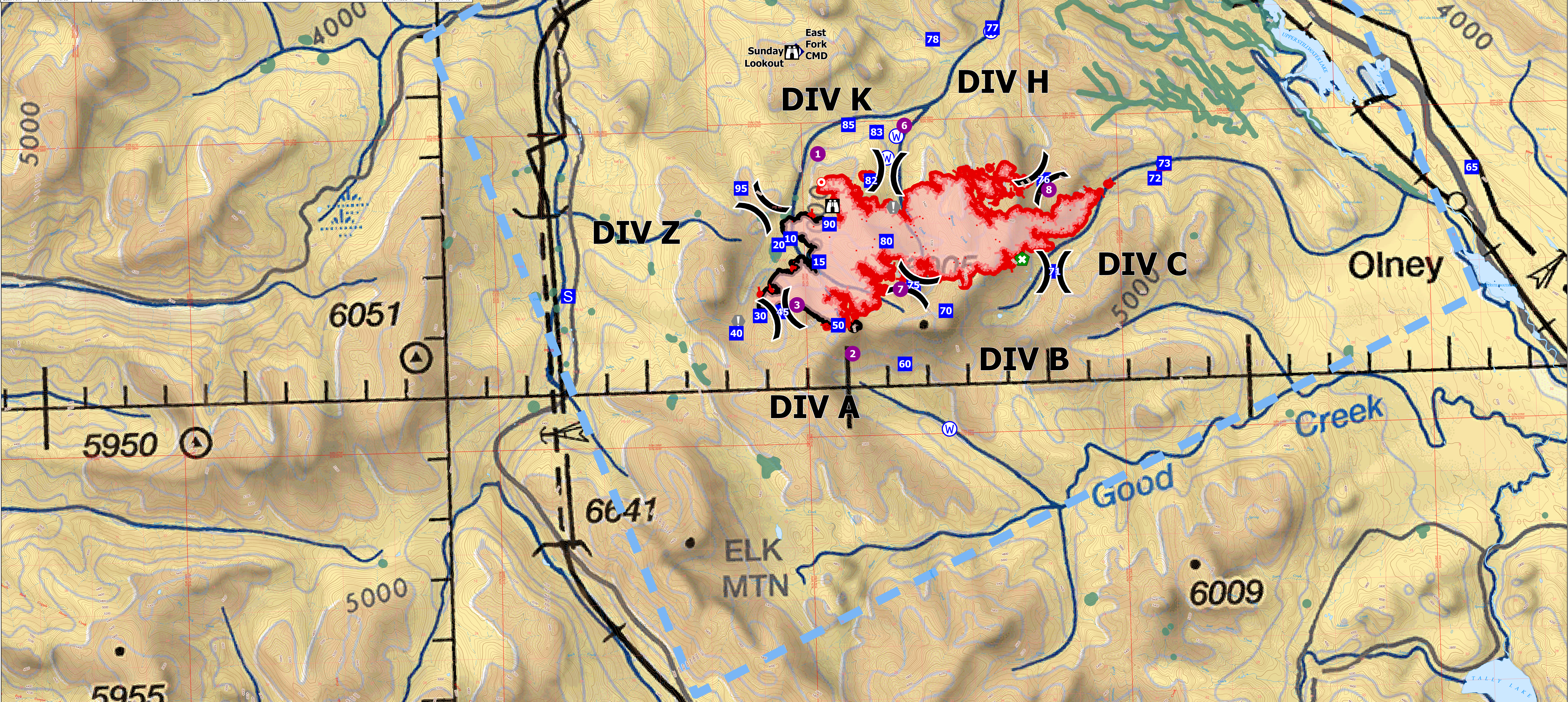
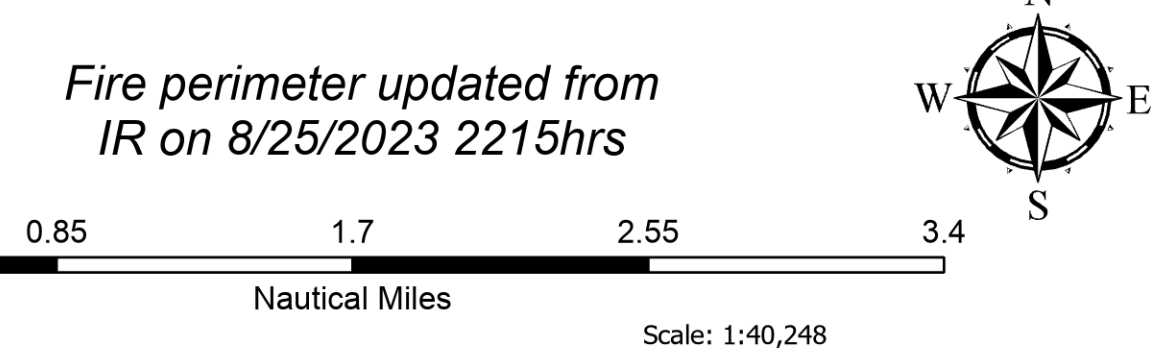


IncidentName	FeatureCategory	Label	Comments	LatWGS84_DDM	LongWGS84_DDM
East Fork	Drop Point	10		48° 32.504' N	114° 51.329' W
East Fork	Drop Point	15		48° 32.105' N	114° 50.633' W
East Fork	Drop Point	20		48° 32.407' N	114° 51.025' W
East Fork	Drop Point	30		48° 31.238' N	114° 52.138' W
East Fork	Drop Point	40		48° 30.962' N	114° 52.743' W
East Fork	Drop Point	45		48° 31.293' N	114° 51.571' W
East Fork	Drop Point	50		48° 31.047' N	114° 50.201' W
East Fork	Drop Point	60		48° 30.377' N	114° 48.566' W
East Fork	Drop Point	65		48° 33.551' N	114° 54.095' W
East Fork	Drop Point	70		48° 31.236' N	114° 47.508' W
East Fork	Drop Point	71	New Drop Point in Div C	48° 31.835' N	114° 44.772' W
East Fork	Drop Point	72	New Drop Point in Div C	48° 33.329' N	114° 42.206' W
East Fork	Drop Point	73		48° 33.573' N	114° 41.956' W
East Fork	Drop Point	75		48° 31.678' N	114° 48.295' W
East Fork	Drop Point	76		48° 33.362' N	114° 44.074' W
East Fork	Drop Point	77		48° 35.901' N	114° 46.143' W
East Fork	Drop Point	78		48° 35.739' N	114° 47.642' W
East Fork	Drop Point	80	Actual DP 80 point	48° 32.418' N	114° 48.940' W
East Fork	Drop Point	82	Junt. 3669rd/3707rd drop point for supplies/ spot fire support vehicle parking along shoulder of road	48° 33.427' N	114° 49.276' W
East Fork	Drop Point	83		48° 34.227' N	114° 49.106' W
East Fork	Drop Point	85	Drop point - supply drop, Draft site at bridge	48° 34.360' N	114° 49.804' W
East Fork	Drop Point	90		48° 32.724' N	114° 50.347' W
East Fork	Drop Point	95	Updated to Drop Point 8/24. Helispot for medicvac site	48° 33.358' N	114° 52.525' W
East Fork	Helispot	1	Approved for T3 Helicopter	48° 33.893' N	114° 50.588' W
East Fork	Helispot	2	Approved for T3 Helicopter	48° 30.569' N	114° 49.861' W
East Fork	Helispot	3	Type 3	48° 31.401' N	114° 51.211' W
East Fork	Helispot	6		48° 34.223' N	114° 48.412' W
East Fork	Helispot	7		48° 31.613' N	114° 48.623' W
East Fork	Helispot	8	4x4 ground access. Recommend dust abatement before use.	48° 33.191' N	114° 44.855' W
East Fork	Incident Command Post		Murphy Lake Ranger Station	48° 44.168' N	114° 52.053' W
East Fork	Lookout			48° 33.024' N	114° 50.260' W
East Fork	Lookout	Sunday Lookout		48° 35.579' N	114° 51.002' W
East Fork	Repeater	East Fork CMD	KNF-East Fork Fire	48° 35.598' N	114° 51.059' W
East Fork	Repeater	Marston Mountain		48° 45.865' N	114° 47.427' W
East Fork	Value at Risk		soil sediment study site. culvert trap and equipment in place. try to maintain	48° 32.978' N	114° 48.742' W
East Fork	Value at Risk		white pine plus tree. do not cut. if fire moves this direction, implement mitigation measures to prevent damage to tree	48° 31.158' N	114° 52.687' W
East Fork	Water Source		Logging activities near by.	48° 29.282' N	114° 47.502' W
East Fork	Water Source			48° 33.569' N	114° 41.975' W
East Fork	Water Source			48° 35.538' N	114° 46.183' W
East Fork	Water Source		Needs improvement/dammed up	48° 33.790' N	114° 48.868' W
East Fork	Water Source		would need some improvement, clearing down wood	48° 34.151' N	114° 48.616' W



**AirOps**  
 East Fork  
 MT-KNF-000262  
 5102 acres



- Label Point
- Helispot
- ⌘ Division Break
- Drop Point
- Staging Area
- Ⓜ Lookout
- ⦿ Hot Spot - Spot Fire
- Value at Risk
- ⊕ Retardant in Avoidance Area
- ◆ Repeater
- ▲ Hazard
- Ⓜ Water Source
- Temporary Flight Restriction
- IR Isolated Heat Source
- Wildfire Perimeter
- Contained
- Uncontained
- Aerial Fire Retardant Avoidance Areas

kmally  
 8/26/2023 2059  
 North American 1983 Datum.  
 Lat/Long Grid