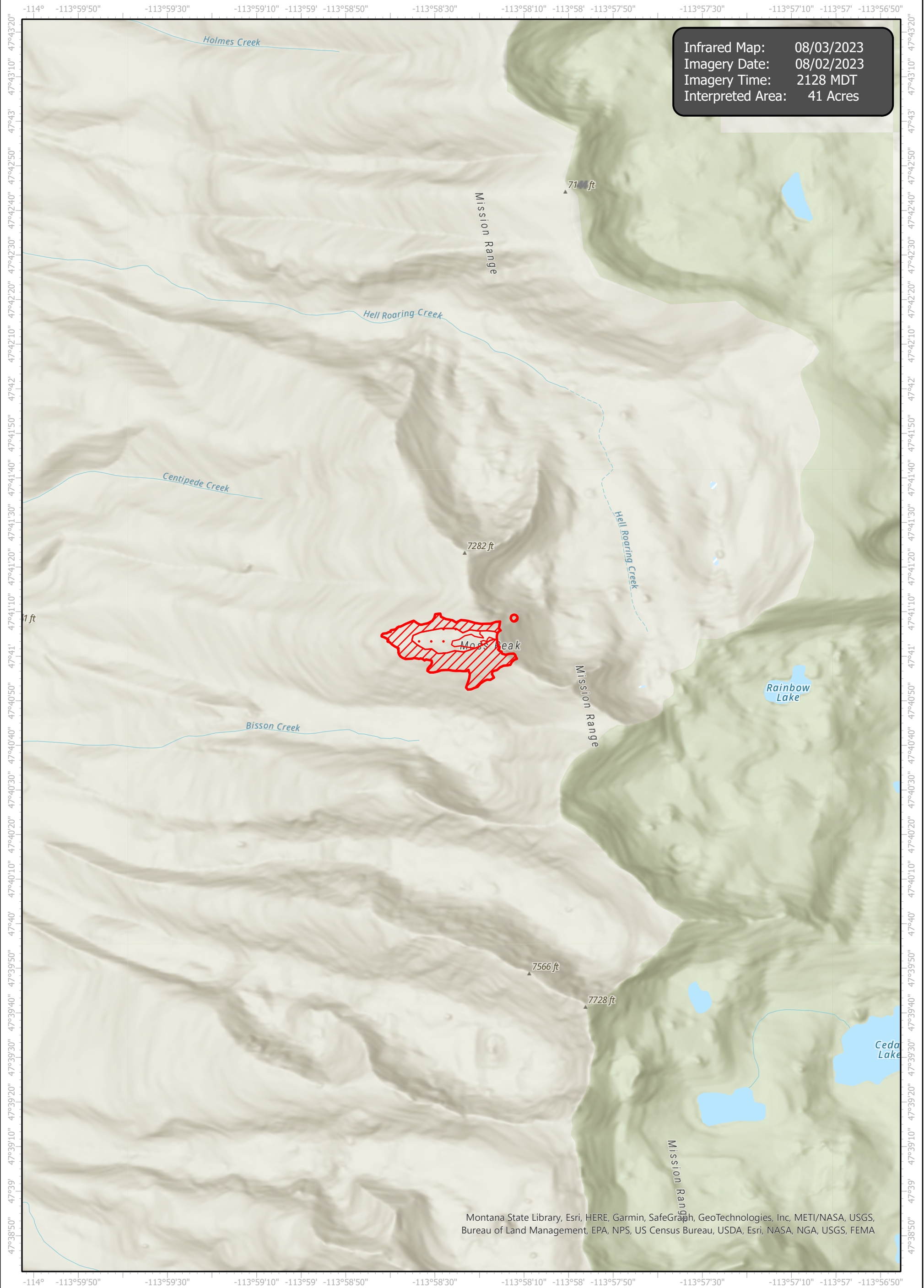


Holmes Infrared Map

Incident # (MTFHA 000102)



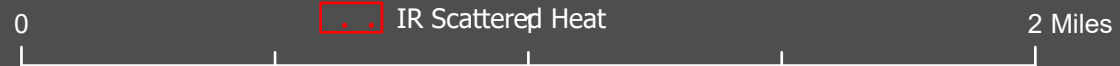
Infrared Map: 08/03/2023
Imagery Date: 08/02/2023
Imagery Time: 2128 MDT
Interpreted Area: 41 Acres

Montana State Library, Esri, HERE, Garmin, SafeGraph, GeoTechnologies, Inc, METI/NASA, USGS, Bureau of Land Management, EPA, NPS, US Census Bureau, USDA, Esri, NASA, NGA, USGS, FEMA



GCS WGS 1984
Scale: 1:24,000

- IR Heat Perimeter
- IR Intense Heat
- IR Scattered Heat



Infrared Interrupter: Daniel LeVrier
email: daniel.levrier@usda.gov