

Transportation Map

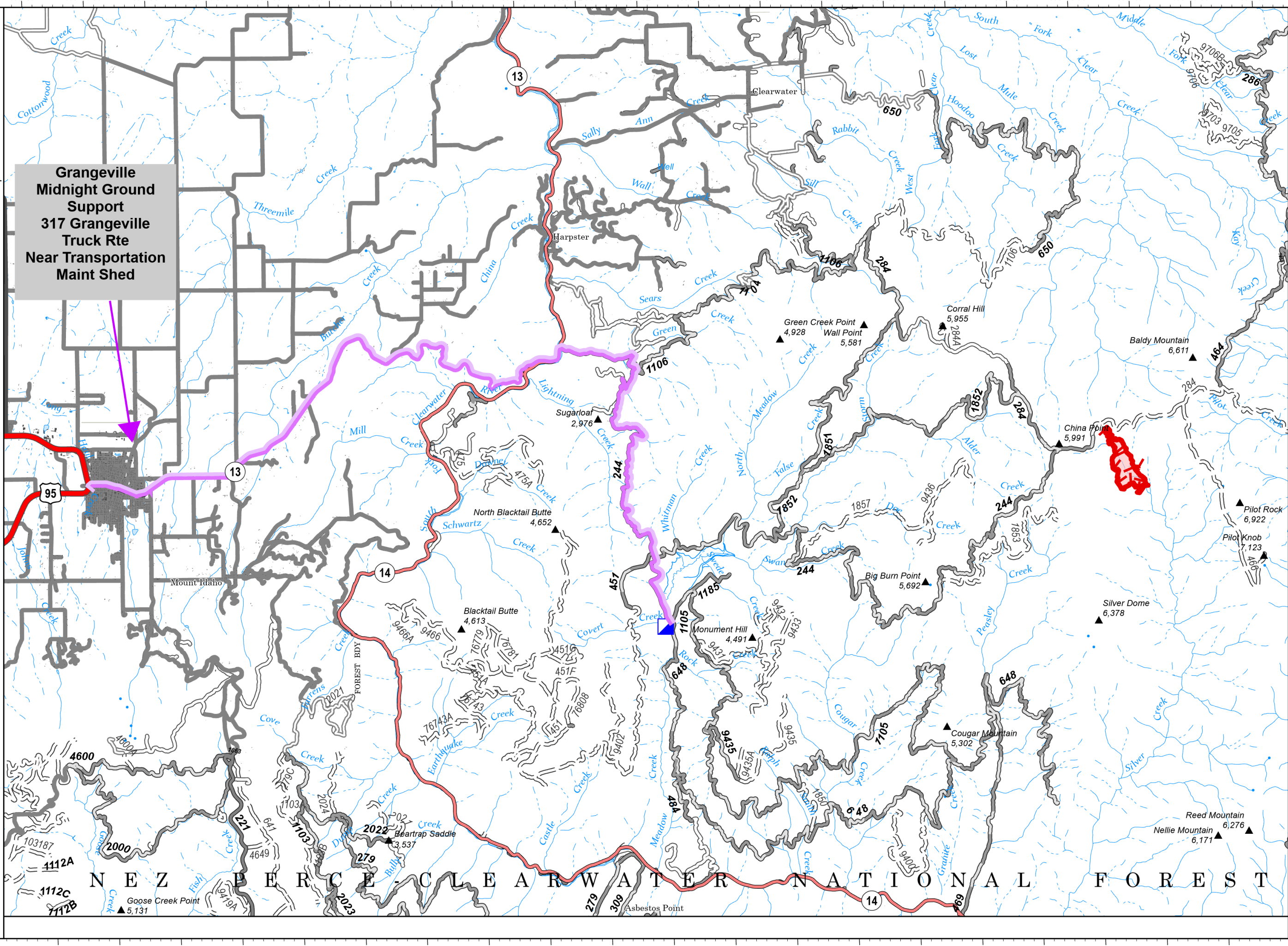
Midnight
ID-NCF-000370
179 acres
7/28/2023

Fire perimeter updated from
Acres from IR on 7/17/2023 @ 2035

- Route_to_Midnight_ICP
- Incident Command Post
- Wildfire Daily Fire Perimeter
- Primary Highway
- Secondary Highway
- Primary Paved
- Secondary Paved
- State Road (Dirt)
- County Road (Dirt)
- Primary Dirt
- Secondary Dirt

From Grangeville,
Take Hwy 13 N for
~ 11 miles. Turn
right onto FS road
#244, continue on
244 for ~ 7 miles.
Continue on FS road
#648 for ~ 2 miles to
ICP.

**Grangeville
Midnight Ground
Support
317 Grangeville
Truck Rte
Near Transportation
Maint Shed**



0 0.5 1
Miles
Scale: 1:106,000

NR Remote Incident Support
7/28/2023 1748
North American 1983
Datum: LatLong Grid

NEZ PERCE-CLEARWATER NATIONAL FOREST