

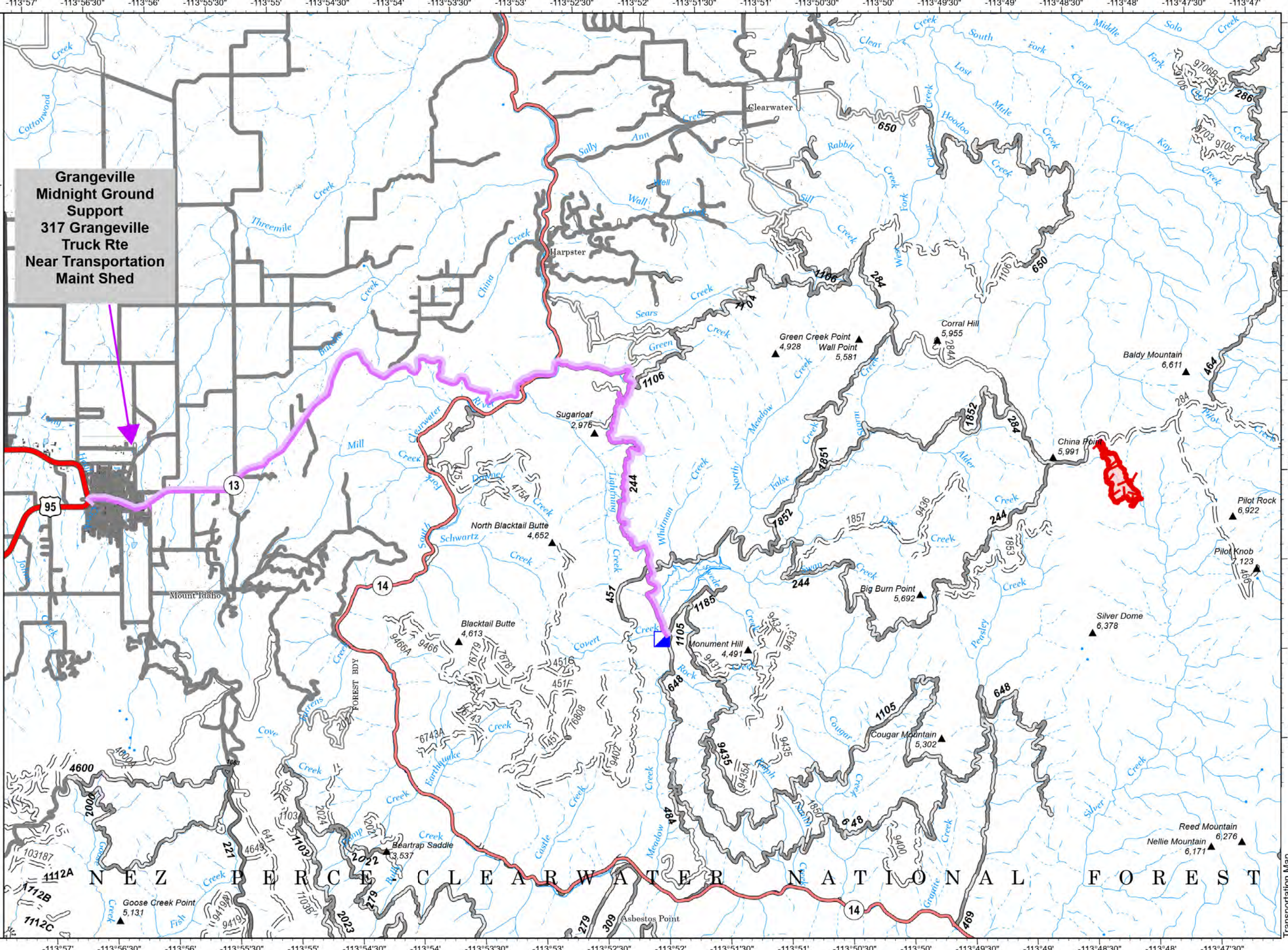
# Transportation Map

Midnight  
ID-NCF-000370  
179 acres  
08/01/2023

Fire perimeter updated from  
Acres from IR on 7/17/2023 @ 2035

- Route\_to\_Midnight\_ICP
- Incident Command Post
- Wildfire Daily Fire Perimeter
- Primary Highway
- Secondary Highway
- Primary Paved
- Secondary Paved
- State Road (Dirt)
- County Road (Dirt)
- Primary Dirt
- Secondary Dirt

From Grangeville,  
Take Hwy 13 N for  
~ 11 miles. Turn  
right onto FS road  
#244, continue on  
244 for ~ 7 miles.  
Continue on FS road  
#648 for ~ 2 miles to  
ICP.



NEZ PERCE CLEARWATER NATIONAL FOREST